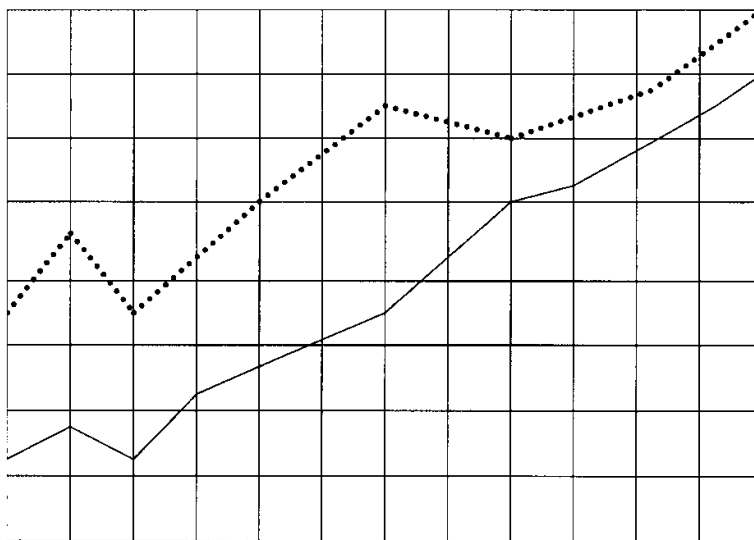




GOVERNMENT OF GOA

**PRICE TRENDS
IN
GOA STATE
2005 - 2008**



**DIRECTORATE OF PLANNING, STATISTICS & EVALUATION
PANAJI - GOA**



GOVERNMENT OF GOA

PRICE TRENDS

IN

GOA STATE

2005 - 2008

**DIRECTORATE OF PLANNING, STATISTICS & EVALUATION
PANAJI - GOA**

PREFACE

The impact of price movement not only affects the standard of living of the people but also has a significant bearing on project formulation and investment decisions. Government and Private organization or agencies too depend on price statistics for fixation of wages and various other allowances for its future planning.

The present publication on "Price Trends" being twenty seventh in series, besides giving the trends in the movement of retail and wholesale prices for some of the essential commodities in Goa State during the years 2005, 2006, 2007 & 2008 also presents yearly averages prices for the years 2000 onwards. Based on the Index Numbers compiled by this Directorate (for Middle Class Non-Manual Employees with old and Revised Base) and those by the Labour Bureau, Shimla for industrial Workers with old Base (1966=100) for General Index and also with Revised Base (1982=100 & 2001=100), an analysis of the price trends has been attempted.

It is hoped that this publication will serve as a useful source for the price information needs of all concerned. While all efforts have been made to incorporate authentic price data in the publication, suggestions for further qualitative improvements in future are most welcome.

The generous co-operation extended by various individuals, shops, agencies, etc. in making available the requisite data is gratefully acknowledged. Shri Rosario E. Botelho - Statistical Assistant assisted by Kum. Gail A. Azavedo - Investigator and Kum Geeta Jamuni - LDC, deserves special mention as they have contributed immensely in terms of collection, compilation, computation and writing of report.

(Anand Sherkhane)

Director

Tel. No. 2225983

PANAJI - GOA

Dated :- 02 .12. 2010

CONTENTS

Page No.

	Price Trends — Goa State : Introduction	1- 3
	STATISTICAL TABLES - 2005	
Table I	Scale of Ration fixed for distribution of different commodities	5
Table II	Consumer Price Index Numbers for Middle Class Non-Manual Employees	6
Table III	Consumer Price Index Numbers for Industrial Workers	7
Table IV	All India Consumer Price Index Numbers	8
Table V	Consumer Price Index Numbers for Urban Non-Manual Employees(Calendar year average)	9-10
Table VI	Consumer Price Index Numbers for Urban Non-Manual Employees (Fiscal year average)	11-12
Table VII	Average wholesale prices of some important commodities in Panaji Market	13
Table VIII	Average wholesale prices of some important commodities in Margao Market	14
Table IX	Average wholesale prices of some important commodities in Mapusa Market	15
Table X	Average retail prices of some essential commodities of Middle Class consumption in Goa State	16
	STATISTICAL TABLES - 2006	
Table I	Scale of Ration fixed for distribution of different commodities	18
Table II	Consumer Price Index Numbers for Middle Class Non-Manual Employees	19
Table III	Consumer Price Index Numbers for Industrial Workers	20
Table IV	All India Consumer Price Index Numbers	21
Table V	Consumer Price Index Numbers for Urban Non-Manual Employees(Calendar year average)	22-23
Table VI	Consumer Price Index Numbers for Urban Non-Manual Employees (Fiscal year average)	24-25
Table VII	Average wholesale prices of some important commodities in Panaji Market	26
Table VIII	Average wholesale prices of some important commodities in Margao Market	27
Table IX	Average wholesale prices of some important commodities in Mapusa Market	28
Table X	Average retail prices of some essential commodities of Middle Class consumption in Goa State	29
	STATISTICAL TABLES- 2007	
Table I	Scale of Ration fixed for distribution of different commodities	31
Table II	Consumer Price Index Numbers for Middle Class Non-Manual Employees	32
Table III	Consumer Price Index Numbers for Industrial Workers	33
Table IV	All India Consumer Price Index Numbers	34
Table V	Consumer Price Index Numbers for Urban Non-Manual Employees(Calendar year average)	35-36
Table VI	Consumer Price Index Numbers for Urban Non-Manual Employees (Fiscal year average)	37-38
Table VII	Average wholesale prices of some important commodities in Panaji Market	39
Table VIII	Average wholesale prices of some important commodities in Margao Market	40
Table IX	Average wholesale prices of some important commodities in Mapusa Market	41
Table X	Average retail prices of some essential commodities of Middle Class consumption in Goa State	42

PRICE TRENDS — GOA STATE

INTRODUCTION

1. GENERAL BACKGROUND

Goa, which was a Union Territory along with Daman and Diu, was conferred Statehood on 30th May, 1987. It is administratively divided into two districts viz. North Goa District and South Goa District with their head-quarters at Panaji and Margao, respectively. These districts are further sub-divided into eleven talukas. While North Goa consists of six talukas viz. Tiswadi, Bardez, Pernem, Bicholim, Sattari, and Ponda; South Goa comprises of five talukas viz. Sanguem, Canacona, Quepem, Salcete and Mormugao. The geographical area of the State is 3702 Sq. Kms, of which 1736 Sq Kms. is covered by North Goa and the remaining 1966 Sq. Kms. by South Goa. About 1,22,446 hectares of area is under forest and the net area sown is 1,34,208 hectares situated on the west coast of Indian sub continent. The State is endowed with rainfall from the South – West monsoon, the normal rainfall recorded during the year 2008-09 being 2573 mm.

1.2 The total population of the state according to the 2001 census, is 13,47,668 of which North Goa had 7,58,573 and South Goa 5,89,095. The density of population of the State is 364 persons per Sq. Kms. The density of population in North Goa is 437 persons per Sq. Kms as against 300 persons per Sq. Kms. in South Goa. The Rural population of the State was 6,77,091 persons of whom North Goa had 4,16,824 and South Goa 2,60,267 . Out of the total workers in the State numbering 5,22,855 persons, 81 percent were main workers and remaining 19 percent, marginal workers.

1.3 In order to have adequate control over prices and ensure equitable distribution of the essential commodities to the people at reasonable rates, the Government has introduced public distribution of essential commodities through a number of fair price shops. The scale of ration fixed for distribution is shown in Table –I separately for the years 2005, 2006, 2007 & 2008.

2. CPI NUMBERS - Its Meaning, Scope and Use

The Consumer Price Index Numbers indicate the average percentage change in the prices paid by the consumer over a period of time with reference to a base period. The average percentage change, measured by the index is estimated on monthly basis with reference to a fixed period of the index. The index during the base period is taken to be 100 so that the indices for later periods are automatically expressed as percentage with reference to the base period.

The objective of the index is to measure the effect of price change with reference to a fixed basket of goods and services that form part of consumption. This basket reflects a particular level of living of the population group from the point of view of consumption. Thus, the fixed base period of the index provides uniform reference period for consumption purpose and the fixed basket of goods and services enable measurements of the effect of price changes. For example, Consumer Price Index numbers for Middle Class Non- Manual Employees of Goa State for December, 2008 was 735 (Base 1982=100) indicating that the cost of a fixed baskets of goods and services consumed by the middle class non-manual employees in Goa has increased by 635 percent compared to the base year (1982-83) prices.

2.2 The Index does not measure absolute level of prices, but only indicates the average percentage change in the prices of a fixed basket of goods and services at different points of time.

2.3 This Index does not also measure changes in the total expenditure of the population group or in other words, their actual cost of living. It measures the effect of price change only.

2.4 The cost of living population group is influenced by a large number of factors like income, changes in the standard of living, quality of commodities and services consumed, prices etc. It will be readily conceded that one of the most important factors determining change in the cost of living of the population group is the extent to which the prices of goods and services consumed by them change from time to time. The prices and income are correlated. It is so because, if prices go up and income of the population group remains constant, the population group has to spend more for the same quantum of goods and services and this results in a fall in the standard of living. Conversely, if income increases more than prices, then there is an improvement in the living conditions. Thus, a cost of Living Index, in the true sense of the term, has to take into account different factors. Consumer Price Index Numbers, therefore, help us to measure the cost of living.

2.5 A study of the Consumer Price Index will also enable us to estimate the required change in income which is necessary to maintain a given level of standard of living of the population group covered by the Index.

3. CPI NOS. FOR THE MIDDLE CLASS NON-MANUAL EMPLOYEES IN GOA STATE

The consumer price Index Numbers for the Middle Class Non-Manual Employees in Goa are being compiled by the Directorate of Planning, Statistics and Evaluation since 1966, based on the Family Living Survey conducted in 1965 for Panaji Town. As is well known, the consumption pattern of a given population undergoes radical changes with the passage of time and the series become out-dated. As such, the Central Statistical Organisation, New Delhi carried out a fresh Middle Class Family Living Survey during the year 1982 on a uniform basis throughout the country.

3.2 A similar survey, on the pattern of the one conducted by the Central Statistical Organisation and approved by the Technical Advisory Committee (TAC) on prices and cost of living was carried out by this Directorate during the year 1982 – 83, with a view to derive the new Weighting Diagram, based on the latest consumption pattern of the middle class families in Goa. In this survey, four different centers namely Panaji, Margao, Vasco and Mapusa towns were covered. The methodology and sampling design for this series were decided upon in consultation with the Central Statistical organization for the purpose of uniformity.

3.3 The Consumer Price Index Numbers for the Middle Class Non-Manual Employees are being compiled by this Directorate based on the fresh surveys conducted weekly and monthly basis. The quarterly Index Numbers are regularly published in the form of a small bulletin. The General and Group wise Index Numbers are given in Table II, separately for the years 2005, 2006, 2007 and 2008. The average yearly indices on Revised Base 1982-83=100 since 2000 are also given in the same table.

4. CPI NOS. FOR INDUSTRIAL WORKERS IN GOA.

The series of Consumer Price Index Numbers for Industrial Workers in Goa was being compiled regularly on old Base (1966=100) by the Labour Bureau, Shimla since 1967. *Since it was felt that with the passage of time the consumption pattern of the working class had gone a change,* the old series was replaced by the New Series with base 2001=100 on the basis of a working Class Family Income and Expenditure Survey conducted in the year 1981-82, all over the country. The price collection work for the

new series in respect of Goa is being done by the officials of the Directorate of Planning, Statistics and Evaluation, Government of Goa.

4.2 The industrial centers selected for the survey are Margao, Vasco, Ponda, Curchorem, Bicholim and Mapusa. This Index is widely used for regulating the payment of Dearness Allowances to the employees to compensate for the rise in prices. The Dearness Allowance of the employees are either increased or reduced as per the rise and fall of the particular Index with which the Dearness Allowances is linked.

4.3 The average yearly indices on revised base 2001=100 of the Industrial Workers in Goa have been given in table III separately for the years 2005, 2006, 2007 & 2008.

5. ALL INDIA CPI NOS. FOR URBAN NON-MANUAL EMPLOYEES AND INDUSTRIAL WORKERS

Table IV gives month wise All India Consumer Price Index Numbers for both urban Non-Manual Employees and Industrial Workers on base 1960=100. It also gives Annual Index series for the earlier years since 2000. These indices are being compiled by the Central Statistical Organisation (CSO), New – Delhi and the Labour Bureau, Shimla respectively. The Central Statistical Organisation as well as the Labour bureau have since revised the base years to 1984-85=100 and 2001=100 respectively.

5.2 It is not possible to have a rigorous comparison between the All India series referred to above and the series for Goa, due to the different base years used for compilation of these two different series of Index Numbers viz. series of General Index of Consumer Price Index Numbers for Non-Manual Employees (Base 1984-85=100) for some of the important cities in the country, compiled by CSO, New Delhi and that of Goa State (Base 1982-83=100) compiled by the Directorate of Planning, Statistics and Evaluation, Panaji which are given in Table V and VI respectively. However, for the sake of comparison, estimated figures are given in the above tables by converting the Base Year from 1982-83=100 to 1984-85=100. However these Tables for Urban Non-Manual Employees for the year 2008, has been discontinued for non availability of data from Central Statistical Organisation, New Delhi.

6. WHOLESALE AND RETAIL PRICES

6.1 Markets in Goa State: As stated earlier, the State of Goa is administratively divided into 11 talukas. The head quarter of each taluka is considered as local market. However, three towns, viz. Panaji, Margao and Mapusa are the important centres for wholesale and retail trade in the State.

6.2 Wholesale and Retail Prices: The annual average wholesale prices of important commodities for the years 2005, 2006, 2007 and 2008 and their monthly spread for Panaji, Margao and Mapusa towns are presented in Tables VII, VIII and IX respectively. Whereas for the year 2008 it is presented in table Nos. V, VI & VII. Similarly, average retail prices of selected items of common consumption of Middle class Non-Manual Employees for Goa State are given in table X and for the year 2008 it is presented in Table No. VIII. Interested readers may refer to these to have a glimpse of the picture of yearwise and monthwise fluctuations in prices.



**STATISTICAL
TABLES**



**YEAR
2005**

TABLE NO. 1.**Scale of Ration Fixed for Distribution of Different Commodities during 2005**

Sl. No.	Commodity	Month	Quota Per Card			
			APL	BPL	AAY	ANP
1	2	3	4	5	6	7
1.	Rice	January, April & August February, May & July March & December June September October November	25 Kgs 25 Kgs 25 Kgs 25 Kgs 25 Kgs 25 Kgs 25 Kgs	29 Kgs 30 Kgs 28 Kgs 31 Kgs 35 Kgs 33 Kgs 32 Kgs	35 Kgs 35 Kgs 35 Kgs 35 Kgs 35 Kgs 35 Kgs 35 Kgs	10 Kgs 10 Kgs 10 Kgs 10 Kgs 10 Kgs 10 Kgs 10 Kgs
2.	Wheat	January, February, March, April, May, June, July, August, September, October, November & December	10 Kgs	--	--	--
3.	Sugar	January & June May, July, August, October & November	Nil Nil	1 Kg per unit of ration card @ Rs. 14.50 per kg 1 Kg per unit of ration card @ Rs. 15.50 per kg		
4.	Palmolein oil	--	--			

**Abbreviation: APL - Above Poverty Line
BPL - Below Poverty Line
AAY - Antodaya Anna Yojna
ANP - Annapurna**

Source: Directorate of Civil Supplies & Price Control, Panaji.

TABLE II**Consumer Price Index Numbers for Middle Class Non Manual Employees in Goa****Base: 1982 - 83 = 100 w.e.f. July, '90.**

Year / Month	General Index		Percentage variation over the previous year on revised base	Food, Beverages & Tobacco Index	Fuel & Light Index	Housing Index	Clothing Bedding & Footwear Index	Miscellaneous Index
	Old Base (1966=100)	Revised Base (1982-83=100)						
1	2	2(a)	3	4	5	6	7	8
2000	1300	469	5.39	510	305	371	429	446
2001	1373	496	5.76	569	361	381	427	465
2002	1433	518	4.44	597	382	391	437	484
2003	1478	533	2.90	625	385	401	437	477
2004	1534	554	3.94	646	430	411	448	509
2005	1601	578	4.33	675	431	424	490	530
January, 05	1562	564		650	421	421	489	528
February, 05	1557	562		645	421	421	489	528
March, 05	1573	568		656	433	421	489	528
April, 05	1593	575		672	433	421	489	528
May, 05	1609	581		683	433	421	489	528
June, 05	1626	587		696	433	421	489	528
July, 05	1632	589		697	432	426	490	532
August, 05	1620	585		688	432	426	490	532
September, 05	1601	578		675	432	426	490	532
October, 05	1620	585		688	432	426	490	532
November, 05	1609	581		679	432	426	490	532
December, 05	1604	579		676	432	426	490	532

Converted on Old Base with conversion factor 2.77

Source: Directorate of Planning, Statistics & Evaluation, Panaji - Goa.

TABLE III**Consumer Price Index for the Industrial Workers in Goa****Base: 1982 = 100 w.e.f. October, '88**

Year / Month	General Index		Percentage variation over the previous year on revised base	Food Group Index	Pan,Supari, tobacco & Intoxicants Index	Fuel & Light Index	Housing Index	Clothing Bedding & Footwear Index	Miscellaneous Index
	Old Base (1966=100)	Revised Base (1982=100)							
1	2	2(a)	3	4	5	6	7	8	9
2000	1768	520	7.88	548	519	415	543	300	509
2001	1886	555	6.73	567	548	500	668	295	540
2002	1958	576	3.78	583	583	557	705	299	557
2003	2014	592	2.78	598	604	564	747	304	567
2004	2086	614	3.72	612	622	569	831	311	586
2005	2155	634	3.26	620	640	548	961	321	598
January, 05	2142	630		619	630	561	932	323	594
February, 05	2142	630		619	638	564	932	323	595
March, 05	2135	628		614	638	568	932	320	595
April, 05	2125	625		609	638	570	932	320	596
May, 05	2145	631		617	640	576	932	321	596
June, 05	2145	631		618	642	576	932	321	598
July, 05	2159	635		616	642	545	989	321	598
August, 05	2169	638		623	643	529	989	321	598
September, 05	2169	638		623	643	529	989	321	598
October, 05	2166	637		621	643	529	989	321	598
November, 05	2179	641		627	642	529	989	322	601
December, 05	2183	642		631	642	503	989	322	605

*Converted on Old Base with conversion factor 3.40

Source: Labour Bureau, Shimla.

TABLE IV**All India Consumer Price Index Numbers**

Year / Month	General Index for Urban Non-Manual Employees		General Index for Industrial workers	
	Old Base (1960 = 100)	Revised Base (1984- 85 = 100)	Old Base (1960 = 100)	Revised Base (1982 =100)
1	2	2(a)*	3	3(a)+
2000	1946	366	2174	441
2001	2054	386	2256	458
2002	2135	401	2353	477
2003	2215	416	2443	496
2004	2296	432	2535	514
2005	2399	451	2642	536
January, 05	2341	440	2593	526
February, 05	2341	440	2588	525
March, 05	2346	441	2588	525
April, 05	2357	443	2608	529
May, 05	2367	445	2598	527
June, 05	2383	448	2608	529
July, 05	2421	455	2652	538
August, 05	2426	456	2662	540
September, 05	2437	458	2672	542
October, 05	2447	460	2702	548
November, 05	2463	463	2726	553
December, 05	2453	461	2712	550

* Applied conversion factor 5.32 to derive old Index

+ Applied conversion factor 4.93 to derive old Index

Source : (1) For Urban Non-Manual Employees Index – Central Statistical Organisation, New Delhi.
(2) For Industrial Workers – Labour Bureau, Shimla.

TABLE - V
Consumer Price Index Numbers for Urban Non-Manual Employees

(Base : 1984 – 85 = 100)

Calendar year Averages

Sl. No.	Centre	2001	2002	2003	2004	2005
1	2	3	4	5	6	7
1	Hyderabad	404	423	438	452	482
2	Kurnool	397	414	424	435	452
3	Vijayawada	416	448	472	492	511
4	Visakhapattanam	393	411	425	438	458
5	Warangal	411	425	440	451	472
6	Guwahati	391	401	410	424	445
7	Patna	356	362	378	393	412
8	Muzaffarpur	369	385	406	421	442
9	Ranchi	361	369	411	411	434
10	Ahmedabad	348	358	369	380	397
11	Bhavnagar	388	400	411	419	433
12	Rajkot	353	365	380	387	407
13	Surat	347	352	359	363	376
14	Rohtak	428	436	452	461	475
15	Shimla	391	404	425	440	457
16	Srinagar	406	400	416	425	445
17	Jammu	392	401	414	426	447
18	Bangalore	407	420	437	453	473
19	Gulbarga	371	393	403	422	447
20	Hubli	392	408	428	451	486
21	Mangalore	379	400	435	451	468
22	Trivandrum	378	401	421	443	471
23	Calicut	371	380	393	404	427
24	Bhopal	371	384	390	393	409
25	Gwalior	411	428	445	459	480
26	Indore	378	395	408	423	445
27	Jabalpur	354	366	373	384	400
28	Mumbai	390	404	412	430	446
29	Aurangabad	413	437	462	484	496
30	Nagpur	373	383	402	417	433
31	Pune	401	415	433	449	466
32	Solapur	365	380	397	411	421
33	Imphal	372	375	393	405	425
34	Shillong	402	418	432	443	458
35	Kohima	423	448	460	482	530
36	Cuttak	376	385	407	425	441
37	Sambalpur	334	344	354	367	382
38	Amritsar	328	340	352	366	377
39	Jaipur	386	400	409	423	438
40	Ajmer	412	432	442	446	465

Contd...

TABLE - V (Concluded)

Sl. No.	Centre	2001	2002	2003	2004	2005
1	2	3	4	5	6	7
41	Jodhpur	376	388	398	408	430
42	Gangtok	419	448	459	470	480
43	Chennai	446	481	498	515	537
44	Coimbatore	449	469	491	501	519
45	Madurai	437	452	464	472	490
46	Salem	424	444	459	468	487
47	Tiruchirapalli	406	436	451	463	479
48	Agartala	429	457	485	500	520
49	Lucknow	360	378	395	419	432
50	Agra	376	396	409	432	455
51	Allahabad	401	423	443	465	503
52	Kanpur	352	368	383	400	413
53	Meerut	340	364	379	400	413
54	Kolkata	353	361	377	395	412
55	Asansol	393	408	411	435	463
56	Kharagpur	371	390	405	421	440
57	Siliguri	415	427	440	453	474
58	Chandigarh	460	474	516	551	596
59	Delhi	395	408	422	438	468
60	Goa*	344	360	370	385	396
All - India		386	402	416	432	451

*Converted from Base Year 1982- 83=100

Source : Central Statistical Organisation, New Delhi.

TABLE VI
Consumer Price Index Numbers for Urban Non-Manual Employees
 (Base: 1984-85=100)
Fiscal Year Averages

Sl. No.	Centre	2001-02	2002-03	2003-04	2004-05	2005-06
1	2	3	4	5	6	7
1	Hyderabad	410	427	440	459	488
2	Kurnool	404	416	426	439	456
3	Vijayawada	424	455	477	496	517
4	Visakhapattanam	399	414	429	441	465
5	Warangal	417	428	442	455	479
6	Guwahati	395	402	414	428	451
7	Patna	359	366	382	396	418
8	Muzaffarpur	374	390	411	423	450
9	Ranchi	362	372	419	415	443
10	Ahmedabad	350	361	371	385	400
11	Bhavnagar	392	403	413	423	435
12	Rajkot	357	369	380	393	408
13	Surat	348	355	360	364	383
14	Rohtak	430	440	454	463	481
15	Shimla	394	409	430	444	462
16	Srinagar	403	403	419	430	449
17	Jammu	395	404	418	430	453
18	Bangalore	412	424	442	456	480
19	Gulbarga	379	395	407	428	451
20	Hubli	396	414	434	459	485
21	Mangalore	383	409	440	454	474
22	Trivandrum	384	406	426	449	479
23	Calicut	373	383	395	409	430
24	Bhopal	375	386	391	394	417
25	Gwalior	415	432	449	463	486
26	Indore	383	397	413	427	452
27	Jabalpur	358	368	376	387	404
28	Mumbai	395	406	415	434	450
29	Aurangabad	420	443	470	486	499
30	Nagpur	375	388	407	421	438
31	Pune	404	421	439	453	471
32	Solapur	368	386	402	412	425
33	Imphal	374	378	398	405	437
34	Shillong	406	422	435	445	466
35	Kohima	429	453	464	493	540
36	Cuttak	379	390	412	428	447
37	Sambalpur	338	345	358	370	386
38	Amritsar	330	343	355	369	381
39	Jaipur	388	403	411	427	443
40	Ajmer	418	435	443	449	471

Contd...

TABLE VI (Concluded)

Sl. No.	Centre	2001-02	2002-03	2003-04	2004-05	2005-06
1	2	3	4	5	6	7
41	Jodhpur	379	391	400	412	435
42	Gangtok	427	452	462	472	482
43	Chennai	456	486	502	520	543
44	Coimbatore	454	474	495	505	528
45	Madurai	441	454	466	474	496
46	Salem	428	448	461	472	492
47	Tiruchirapalli	413	441	454	467	484
48	Agartala	437	463	492	502	526
49	Lucknow	364	383	401	421	438
50	Agra	383	398	415	436	462
51	Allahabad	408	427	450	471	513
52	Kanpur	357	372	388	402	418
53	Meerut	347	367	385	404	419
54	Kolkata	355	364	382	398	416
55	Asansol	398	408	415	444	466
56	Kharagpur	375	394	409	423	449
57	Siliguri	418	430	444	457	477
58	Chandigarh	464	482	525	561	605
59	Delhi	398	412	425	446	472
60	Goa*	349	361	375	386	401
All India		390	405	420	436	456

*Converted from Base Year 1982- 83=100

Source : Central Statistical Organisation, New Delhi.

TABLE VII

Average Wholesale Prices of some important commodities in Panaji Market

(In Rupees)

Year / Month	Rice Raw fine Quintal	Rice Raw coarse Quintal	Rice Boiled coarse Quintal	Wheat-Khandwa Superior quality Quintal	Turdal (Barsi / Indori) Superior quality Quintal	Gram Watana Superior quality White Quintal	Moong Medium Quintal	Coconut oil Pure clean Tin of 15 Kgs.
1	2	3	4	5	6	7	8	9
2000	1710.83	1037.92	1108.33	1018.75	2573.44	1299.46	2029.17	881.27
2001	1485.08	1039.58	1080.00	1059.75	2359.00	1369.25	2541.42	642.75
2002	1522.50	1216.21	1250.21	1168.54	2893.85	1697.81	2791.87	811.94
2003	1508.85	1146.87	1153.71	1142.81	2528.44	1582.92	2449.48	1019.24
2004	1429.48	1200.52	1062.60	1109.06	2435.94	1506.02	2267.08	1387.28
2005	1490.10	1257.29	1226.77	1228.75	2518.84	1448.54	2661.88	1157.60
January, 05	1475.00	1000.00	1025.00	1137.50	2387.50	1525.00	2112.50	1325.00
February, 05	1506.25	968.75	1006.25	1100.00	2381.25	1513.75	2218.75	1322.50
March, 05	1600.00	1150.00	1175.00	1175.00	2328.75	1583.75	2181.25	1362.50
April, 05	1427.50	1030.00	1200.00	1181.25	2328.75	1565.00	2362.50	1162.50
May, 05	1510.00	1347.50	1265.00	1257.50	2475.00	1373.75	2350.00	1137.50
June, 05	1425.00	1348.75	1290.00	1212.50	2587.50	1373.75	2767.50	1093.75
July, 05	1325.00	1371.25	1290.00	1243.75	2600.00	1387.50	2600.00	1050.00
August, 05	1400.00	1225.00	1275.00	1250.00	2600.00	1381.25	2900.00	1100.00
September, 05	1537.50	1371.25	1275.00	1250.00	2600.00	1377.50	2950.00	1025.00
October, 05	1418.75	1368.75	1350.00	1306.25	2625.00	1506.25	3125.00	1118.75
November, 05	1781.00	1581.25	1320.00	1331.25	2687.50	1382.50	3150.00	1131.25
December, 05	1475.00	1325.00	1250.00	1300.00	2625.00	1412.50	3225.00	1062.50

TABLE VII (Concluded) - Panaji Market

(In Rupees)

Year / Month	Groundnut oil, pure, clean Tin of 15 kgs	Vanaspati Tin of 15 kgs	Chillies, dry, Byadgi, long, Superior quality Quintal	Potato (Belgaum) Medium quality Quintal	Onion (N.I.) Medium quality Quintal	Coconut (Indigenous) Medium size Per 1000	Sugar (N.I.) Medium Open market Quintal	Gur (Belgaum) Medium quality Quintal
1	10	11	12	13	14	15	16	17
2000	690.87	570.52	6832.50	549.17	561.98	3608.33	1392.71	1138.85
2001	759.67	578.00	6393.75	799.50	663.00	3205.17	1416.67	1376.00
2002	861.77	668.75	7215.35	947.08	544.58	3939.79	1303.54	1508.79
2003	963.23	752.05	6155.21	648.23	498.65	5271.18	1239.38	1490.00
2004	1068.23	789.50	6735.42	658.27	619.41	6493.12	1417.21	1543.12
2005	996.46	801.67	6193.23	848.65	620.52	5201.88	1836.98	1906.67
January, 05	1100.00	810.00	6375.00	612.50	550.00	6125.00	1675.00	1812.50
February, 05	1002.50	810.00	6425.00	625.00	565.00	6825.00	1688.75	1811.25
March, 05	1118.75	800.00	6268.75	625.00	526.25	6000.00	1712.50	1831.25
April, 05	1112.50	800.00	6500.00	950.00	550.00	5225.00	1725.00	1800.00
May, 05	987.50	800.00	6500.00	927.50	543.75	4650.00	1875.00	1975.00
June, 05	961.25	800.00	6125.00	956.25	600.00	5000.00	1892.50	1975.00
July, 05	887.50	800.00	6300.00	912.50	535.00	4762.50	1918.75	2012.50
August, 05	946.25	800.00	6300.00	825.00	647.50	4743.75	1912.50	1975.00
September, 05	985.00	800.00	6200.00	825.00	700.00	4750.00	1925.00	1818.75
October, 05	931.25	800.00	6200.00	800.00	647.50	4672.50	1900.00	1962.50
November, 05	1050.00	800.00	6000.00	962.50	818.75	4675.00	1943.75	1968.75
December, 05	875.00	800.00	5125.00	1162.50	762.50	4993.75	1875.00	1937.50

TABLE VIII**Average Wholesale Prices of some important commodities in Margao Market****(In Rupees)**

Year / Month	Rice Raw fine Quintal	Rice Raw coarse Quintal	Rice Boiled coarse Quintal	Wheat-Khandwa Superior quality Quintal	Turdal (Barsi / Indori) Superior quality Quintal	Gram Watana Superior quality White Quintal	Moong Medium Quintal	Coconut oil Pure clean Tin of 15 Kgs.
1	2	3	4	5	6	7	8	9
2000	1687.50	1070.83	1064.58	1053.33	2364.58	1169.79	2056.25	753.60
2001	1490.58	1029.17	1083.33	976.67	2275.08	1347.92	2503.25	608.00
2002	1136.46	1070.00	1105.00	1128.12	2440.62	1473.96	2506.25	826.25
2003	1258.33	1191.67	1201.04	1219.79	2545.83	1540.62	2360.42	838.75
2004	1352.08	1370.83	1305.21	1240.62	2739.58	1563.62	2209.37	1200.00
2005	1366.67	1364.58	1375.00	1261.46	2397.92	1478.12	2656.25	1179.17
January, 05	1350.00	1375.00	1400.00	1175.00	2350.00	1625.00	2350.00	1200.00
February, 05	1412.50	1412.50	1425.00	1150.00	2325.00	1650.00	2350.00	1200.00
March, 05	1362.50	1362.50	1375.00	1100.00	2250.00	1550.00	2450.00	1175.00
April, 05	1362.50	1400.00	1400.00	1100.00	2250.00	1462.50	2450.00	1175.00
May, 05	1375.00	1387.50	1400.00	1387.50	2300.00	1450.00	2450.00	1175.00
June, 05	1375.50	1387.50	1400.00	1337.50	2375.00	1337.50	2625.00	1175.00
July, 05	1375.00	1362.50	1350.00	1325.00	2300.00	1375.00	2700.00	1175.00
August, 05	1387.50	1412.50	1400.00	1375.00	2375.00	1437.50	2800.00	1175.00
September, 05	1387.50	1387.50	1375.00	1387.50	2450.00	1450.00	2800.00	1175.00
October, 05	1387.50	1387.50	1375.00	1300.00	2600.00	1500.00	2900.00	1175.00
November, 05	1350.00	1300.00	1300.00	1300.00	2600.00	1450.00	3000.00	1175.00
December, 05	1275.00	1200.00	1300.00	1200.00	2600.00	1450.00	3000.00	1175.00

TABLE VIII (Concluded) - Margao Market**(In Rupees)**

Year / Month	Groundnut oil, pure, clean Tin of 15 kgs	Vanaspati Tin of 15 kgs	Chillies, dry, Byadgi, long, Superior quality Quintal	Potato (Belgaum) Medium quality Quintal	Onion (N.I.) Medium quality Quintal	Coconut (Indigenous) Medium size Per 1000	Sugar (N.I.) Medium Open market Quintal	Gur (Belgaum) Medium quality Quintal
1	10	11	12	13	14	15	16	17
2000	680.07	535.10	6625.00	504.96	401.04	3695.83	1400.83	1162.50
2001	717.75	556.58	6356.25	740.92	600.75	2995.92	1428.00	1339.83
2002	765.62	662.50	6437.50	830.83	508.85	3738.54	1352.92	1477.50
2003	804.17	716.35	6081.25	683.96	639.27	5457.29	1289.17	1350.00
2004	1100.00	774.50	6875.00	781.25	678.54	5833.33	1478.08	1881.25
2005	941.15	726.25	6222.92	739.58	661.46	5062.50	1792.50	2056.25
January, 05	1100.00	790.00	6750.00	637.50	550.00	5000.00	1800.00	1900.00
February, 05	1000.00	790.00	6750.00	650.00	562.50	5000.00	1825.00	1900.00
March, 05	900.00	700.00	7000.00	650.00	450.00	5000.00	1750.00	1800.00
April, 05	900.00	700.00	7000.00	675.00	450.00	5000.00	1750.00	1800.00
May, 05	900.00	700.00	7175.00	687.50	400.00	5000.00	1750.00	1850.00
June, 05	906.25	700.00	6500.00	725.00	475.00	5500.00	1750.00	2150.00
July, 05	912.50	700.00	6500.00	750.00	550.00	5250.00	1800.00	2200.00
August, 05	912.50	745.00	6000.00	762.50	625.00	5000.00	1850.00	2200.00
September, 05	912.50	745.00	6000.00	762.50	725.00	5000.00	1850.00	2325.00
October, 05	900.00	700.00	5000.00	750.00	1150.00	5000.00	1825.00	2150.00
November, 05	975.00	745.00	5000.00	825.00	1000.00	5000.00	1780.00	2200.00
December, 05	975.00	700.00	5000.00	1000.00	1000.00	5000.00	1780.00	2200.00

TABLE IX**Average Wholesale Prices of some important commodities in Mapusa Market****(In Rupees)**

Year / Month	Rice Raw fine Quintal	Rice Raw coarse Quintal	Rice Boiled coarse Quintal	Wheat-Khandwa Superior quality Quintal	Turdal (Barsi / Indori) Superior quality Quintal	Gram Watana Superior quality White Quintal	Moong Medium Quintal	Coconut oil Pure clean Tin of 15 Kgs.
1	2	3	4	5	6	7	8	9
2000	1733.33	1050.00	1066.67	1045.83	2460.42	1281.25	2131.25	739.58
2001	1499.83	1005.25	1045.83	1027.08	2323.00	1393.75	2450.00	687.17
2002	1438.54	1003.12	1159.37	1032.50	2429.37	1414.58	2363.54	816.98
2003	1368.75	1016.67	1068.33	1081.25	2447.92	1562.50	2329.17	921.87
2004	1687.50	1069.17	989.79	1113.75	2664.58	1612.50	2291.67	1225.00
2005	1429.17	1133.33	1325.00	1203.75	2458.33	1470.83	2550.00	1264.58
January, 05	1500.00	900.00	1300.00	1120.00	2400.00	1500.00	2200.00	1350.00
February, 05	1500.00	900.00	1300.00	1120.00	2400.00	1500.00	2200.00	1375.00
March, 05	1500.00	900.00	1300.00	1120.00	2400.00	1500.00	2200.00	1362.50
April, 05	1500.00	900.00	1300.00	1120.00	2400.00	1500.00	2200.00	1337.50
May, 05	1500.00	900.00	1300.00	1120.00	2400.00	1500.00	2200.00	1350.00
June, 05	1500.00	900.00	1300.00	1120.00	2400.00	1500.00	2200.00	1350.00
July, 05	1350.00	1350.00	1300.00	1200.00	2400.00	1450.00	2800.00	1175.00
August, 05	1400.00	1400.00	1400.00	1200.00	2400.00	1450.00	2800.00	1175.00
September, 05	1400.00	1400.00	1400.00	1400.00	2450.00	1450.00	2800.00	1175.00
October, 05	1300.00	1300.00	1400.00	1300.00	2600.00	1500.00	2900.00	1175.00
November, 05	1350.00	1350.00	1300.00	1325.00	2600.00	1450.00	3000.00	1175.00
December, 05	1350.00	1400.00	1300.00	1300.00	2650.00	1350.00	3100.00	1175.00

TABLE IX (Concluded) - Mapusa Market**(In Rupees)**

Year / Month	Groundnut oil, pure, clean Tin of 15 kgs	Vanaspatti Tin of 15 kgs	Chillies, dry, Byadgi, long, Superior quality Quintal	Potato (Belgaum) Medium quality Quintal	Onion (N.I.) Medium quality Quintal	Coconut (Indigenous) Medium size Per 1000	Sugar (N.I.) Medium Open market Quintal	Gur (Belgaum) Medium quality Quintal
1	10	11	12	13	14	15	16	17
2000	768.75	501.67	6781.25	535.42	420.42	3841.67	1434.37	1157.50
2001	754.17	554.00	6264.58	753.17	604.25	3235.42	1442.17	1366.92
2002	727.50	517.50	7041.67	879.69	521.87	4479.17	1372.71	1331.25
2003	753.08	727.50	7250.00	830.83	507.50	6154.17	1190.00	1252.08
2004	950.08	784.50	6666.67	792.08	723.96	9116.04	1520.83	1845.83
2005	895.83	791.67	6041.67	745.63	680.00	6152.50	1794.79	2021.88
January, 05	850.00	800.00	6250.00	750.00	550.00	5500.00	1760.00	1800.00
February, 05	850.00	800.00	6250.00	650.00	560.00	5500.00	1760.00	1812.50
March, 05	850.00	790.00	6250.00	652.00	500.00	5500.00	1760.00	1800.00
April, 05	850.00	790.00	6250.00	625.00	500.00	5200.00	1760.00	1800.00
May, 05	850.00	790.00	6250.00	650.00	500.00	5150.00	1760.00	1825.00
June, 05	850.00	790.00	6250.00	650.00	550.00	5100.00	1760.00	1800.00
July, 05	975.00	790.00	6000.00	900.00	650.00	5000.00	1830.00	2225.00
August, 05	912.50	790.00	6000.00	750.00	650.00	5000.00	1850.00	2225.00
September, 05	912.50	790.00	6000.00	750.00	700.00	5000.00	1850.00	2325.00
October, 05	900.00	790.00	6000.00	750.00	1050.00	5000.00	1837.50	2150.00
November, 05	975.00	790.00	6000.00	790.00	1000.00	5000.00	1780.00	2200.00
December, 05	975.00	790.00	5000.00	1000.00	950.00	5000.00	1830.00	2300.00

TABLE X**Average Retail Prices of some essential commodities of Middle Class Consumption in Goa State****(In Rupees)**

Year / Month	Rice Raw Medium husked Fair Price Kg	Rice, boiled Medium Open market Kg.	Rice, raw, Mill husked, Open market Kg.	Wheat, brown Medium quality, Fair Price Kg.	Wheat, khandwa brown Open market Kg.	Turdal (Barsi) Superior quality Kg.	Gram Watana Medium quality Kg.	Moong Medium quality Kg.	Coconut Oil mill made Kg.
1	2	3	4	5	6	7	8	9	10
2000	11.51	14.46	12.75	8.69	11.99	29.20	15.29	26.17	73.86
2001	8.95	13.45	11.63	8.01	11.98	27.60	15.87	28.44	57.08
2002	8.52	12.48	11.42	6.60	12.07	28.57	16.60	28.59	67.97
2003	8.95	12.42	11.78	6.60	12.66	30.22	17.24	27.93	86.10
2004	8.95	13.00	11.74	6.60	12.91	33.41	17.74	24.46	103.32
2005	8.71	13.32	12.06	6.60	12.91	32.63	17.76	29.88	100.39
January, 05	7.55	13.50	12.33	6.60	12.78	32.91	18.08	27.07	102.79
February, 05	7.98	13.46	12.20	6.60	12.47	32.32	17.91	27.29	103.44
March, 05	8.47	13.47	11.99	6.60	12.74	30.77	18.08	27.13	104.09
April, 05	8.95	13.02	12.24	6.60	12.48	30.59	17.64	28.17	102.72
May, 05	8.95	13.19	12.13	6.60	12.79	31.68	17.71	29.02	101.73
June, 05	8.95	13.11	12.03	6.60	12.78	30.89	17.69	30.63	100.17
July, 05	8.95	13.26	11.54	6.60	12.68	32.62	18.13	31.18	98.57
August, 05	8.95	13.06	12.27	6.60	12.96	34.52	17.87	33.17	98.79
September, 05	8.95	13.21	11.59	6.60	13.08	33.54	17.38	30.14	98.15
October, 05	8.95	13.23	12.07	6.60	13.23	33.63	16.86	29.08	97.96
November, 05	8.95	13.47	12.06	0.00	13.19	34.37	18.47	31.74	99.29
December, 05	8.95	13.88	12.25	0.00	13.74	33.75	17.28	33.96	96.94

TABLE X (Concluded)**(In Rupees)**

Year / Month	Groundnut Oil pure, mill made Kg.	Vanaspati Kg.	Chillies, Dry Byadgi (N.I.) Kg.	Potato (N.I.) Medium quality Kg.	Onion (N.I.) Medium quality Kg.	Coconut local Medium size Kg.	Sugar		Gur Medium quality Kg.	Arecanut Kg.
							Medium quality Fair Price Kg.	Medium quality open market Kg.		
1	11	12	13	14	15	16	17	18	19	20
2000	55.64	45.93	70.27	7.92	6.88	6.12	12.74	15.72	15.70	160.10
2001	55.75	41.44	72.43	10.12	8.60	4.46	13.25	15.52	16.21	107.60
2002	57.79	46.26	69.51	11.32	7.47	6.22	13.33	14.76	16.91	84.28
2003	72.76	53.28	71.27	9.15	8.04	7.92	13.46	13.81	16.27	88.33
2004	72.61	55.99	84.13	9.91	8.84	9.22	-	16.33	21.42	95.38
2005	73.51	56.13	65.63	11.35	11.29	9.60	15.21	19.04	23.37	97.26
January, 05	71.00	56.72	77.95	10.00	9.00	10.00	14.50	18.71	23.01	95.00
February, 05	74.52	57.00	70.54	10.00	8.72	10.00	0.00	18.07	22.05	95.00
March, 05	73.98	56.55	66.36	9.60	8.20	10.00	0.00	18.12	22.11	94.64
April, 05	73.77	56.02	65.00	10.25	7.88	10.00	0.00	18.64	21.91	94.77
May, 05	73.18	57.10	63.17	10.00	7.75	10.00	15.50	18.90	22.43	96.52
June, 05	73.58	57.30	61.44	10.60	8.40	9.83	14.50	19.06	23.04	97.86
July, 05	73.96	56.18	65.75	12.00	10.00	9.03	15.50	18.98	22.82	97.62
August, 05	74.38	55.63	63.30	12.00	11.00	9.84	15.50	19.77	23.88	99.35
September, 05	73.61	55.38	63.79	11.20	16.00	9.08	0.00	19.71	24.32	99.57
October, 05	73.00	55.25	61.34	11.75	19.50	9.06	15.50	19.50	25.06	99.58
November, 05	73.37	55.90	63.88	12.00	14.25	9.32	15.50	19.44	25.62	99.84
December, 05	73.81	54.49	65.08	16.80	14.80	9.08	0.00	19.58	24.16	97.38



**STATISTICAL
TABLES**



**YEAR
2006**

TABLE NO. 1.**Scale of Ration Fixed for Distribution of Different Commodities during 2006**

Sl. No.	Commodity	Month	Quota Per Card			
			APL	BPL	AAY	ANP
1	2	3	4	5	6	7
1.	Rice	January	25 Kgs	31 Kgs	35 Kgs	10 Kgs
		February	25 Kgs	33 Kgs	35 Kgs	10 Kgs
		March	25 Kgs	32 Kgs	35 Kgs	10 Kgs
		April & June	25 Kgs	17 Kgs	35 Kgs	--
		May	25 Kgs	18 Kgs	35 Kgs	--
		July, September, October, & November	25 Kgs	27 Kgs	35 Kgs	10 Kgs
2.	Wheat	January, February, March, April, May, October & November	10 Kgs	--	--	--
3.	Sugar	January, March, April, May, September, October & November	--	1 Kg per unit of ration card @ Rs 15.50 per kg		
4.	Palmolein oil	--	--			

Abbreviation: APL - Above Poverty Line
BPL – Below Poverty Line
AAY - Antodaya Anna Yojna
ANP - Annapurna

Source: Directorate of Civil Supplies & Price Control, Panaji.

TABLE II**Consumer Price Index Numbers for Middle Class Non Manual Employees in Goa****Base: 1982 - 83 = 100 w.e.f. July, '90.**

Year / Month	General Index		Percentage variation over the previous year on revised base	Food, Beverages & Tobacco Index	Fuel & Light Index	Housing Index	Clothing Bedding & Footwear Index	Miscellaneous Index
	Old Base (1966=100)	Revised Base (1982-83=100)						
1	2	2(a)	3	4	5	6	7	8
2001	1373	496	5.76	569	361	381	427	465
2002	1433	518	4.44	597	382	391	437	484
2003	1478	533	2.90	625	385	401	437	477
2004	1534	554	3.94	646	430	411	448	509
2005	1601	578	4.33	675	431	424	490	530
2006	1678	606	4.84	712	453	434	508	555
January, 06	1615	583		672	432	431	505	547
February, 06	1648	595		697	432	431	505	547
March, 06	1640	592		690	433	431	505	547
April, 06	1676	605		717	449	431	505	547
May, 06	1681	607		720	459	431	505	547
June, 06	1709	617		740	460	431	504	547
July, 06	1728	624		743	461	436	508	562
August, 06	1676	605		705	461	436	507	562
September, 06	1668	602		699	461	436	507	562
October, 06	1737	627		749	460	436	514	562
November, 06	1698	613		719	460	436	514	562
December, 06	1665	601		694	467	436	515	562

Converted on Old Base with conversion factor 2.77

Source: Directorate of Planning, Statistics & Evaluation, Panaji - Goa.

TABLE III
Consumer Price Index for the Industrial Workers in Goa

Base: 2001 = 100 w.e.f. January, '06

Year / Month	General Index			Percentage variation over the previous year on revised base	Food Group Index	Pan,Supari, tobacco & Intoxicants Index	Fuel & Light Index	Housing Index	Clothing Bedding & Footwear Index	Miscellaneous Index
	Old Base (1966=100)	Revised Base (1982=100)	Revised Base (2001=100)							
1	2*	2(a)**	2(b)	3	4	5	6	7	8	9
2001	1886	555	--	6.73	567	548	500	668	295	540
2002	1958	576	--	3.78	583	583	557	705	299	557
2003	2014	592	--	2.78	598	604	564	747	304	567
2004	2086	614	--	3.72	612	622	569	831	311	586
2005	2155	634	--	3.26	620	640	548	961	321	598
2006	2305	678	121	6.94	123	109	117	120	116	122
January, 06	2186	643	115		113	106	120	118	113	118
February, 06	2203	648	116		114	106	120	118	113	118
March, 06	2244	660	118		119	107	115	118	114	118
April, 06	2244	660	118		118	106	115	118	113	123
May, 06	2319	682	122		126	108	116	118	113	123
June, 06	2356	693	124		129	110	116	118	114	124
July, 06	2339	688	123		126	110	117	122	114	124
August, 06	2339	688	123		125	110	117	122	119	124
September, 06	2339	688	123		125	110	117	122	119	124
October, 06	2339	688	123		125	110	117	122	119	124
November, 06	2377	699	125		129	110	118	122	119	124
December, 06	2377	699	125		131	109	118	122	119	123

* Converted on Old Base with conversion factor 3.40

**Converted on Old Base with conversion factor 5.59

Base: 1982 = 100 w.e.f. October, '88 to December '05

Source: Labour Bureau, Shimla.

TABLE IV**All India Consumer Price Index Numbers**

Year / Month	General Index for Urban Non-Manual Employees		General Index for Industrial workers		
	Old Base (1960 = 100)	Revised Base (1984- 85 = 100)	Old Base (1960 = 100)	Revised Base (1982 =100)	Revised Base (2001 =100)
1	2	2(a)*	3	3(a)+	3(b)#
2001	2054	386	2256	458	--
2002	2135	401	2353	477	--
2003	2215	416	2443	496	--
2004	2296	432	2535	514	--
2005	2399	451	2642	536	--
2006	2541	478	3387	687	123
January, 06	2458	462	3279	665	119
February, 06	2453	461	3279	665	119
March, 06	2463	463	3279	665	119
April, 06	2474	465	3307	671	120
May, 06	2506	471	3335	676	121
June, 06	2538	477	3390	688	123
July, 06	2559	481	3417	693	124
August, 06	2575	484	3417	693	124
September, 06	2596	488	3445	699	125
October, 06	2623	493	3500	710	127
November, 06	2628	494	3500	710	127
December, 06	2623	493	3500	710	127

* Applied conversion factor 5.32 to derive old Index

+ Applied conversion factor 4.93 to derive old Index

Applied conversion factor 5.59 to derive old Index

Source : (1) For Urban Non-Manual Employees Index – Central Statistical Organisation, New Delhi.
(2) For Industrial Workers – Labour Bureau, Shimla

TABLE - V
Consumer Price Index Numbers for Urban Non-Manual Employees
(Base : 1984- 85=100)
Calendar year Averages

Sl. No.	Centre	2002	2003	2004	2005	2006
1	2	3	4	5	6	7
1	Hyderabad	423	438	452	482	514
2	Kurnool	414	424	435	452	473
3	Vijayawada	448	472	492	511	532
4	Visakhapattanam	411	425	438	458	484
5	Warangal	425	440	451	472	507
6	Guwahati	401	410	424	445	474
7	Patna	362	378	393	412	441
8	Muzaffarpur	385	406	421	442	482
9	Ranchi	369	411	411	434	479
10	Ahmedabad	358	369	380	397	417
11	Bhavnagar	400	411	419	433	456
12	Rajkot	365	380	387	407	522
13	Surat	352	359	363	376	413
14	Rohtak	436	452	461	475	506
15	Shimla	404	425	440	457	482
16	Srinagar	400	416	425	445	468
17	Jammu	401	414	426	447	472
18	Bangalore	420	437	453	473	504
19	Gulbarga	393	403	422	447	468
20	Hubli	408	428	451	486	502
21	Mangalore	400	435	451	468	498
22	Trivandrum	401	421	443	471	501
23	Calicut	380	393	404	427	442
24	Bhopal	384	390	393	409	450
25	Gwalior	428	445	459	480	513
26	Indore	395	408	423	445	477
27	Jabalpur	366	373	384	400	425
28	Mumbai	404	412	430	446	469
29	Aurangabad	437	462	484	496	532
30	Nagpur	383	402	417	433	461
31	Pune	415	433	449	466	498
32	Solapur	380	397	411	421	441
33	Imphal	375	393	405	425	460
34	Shillong	418	432	443	458	488
35	Kohima	448	460	482	530	564
36	Cuttak	385	407	425	441	469
37	Sambalpur	344	354	367	382	402
38	Amritsar	340	352	366	377	396
39	Jaipur	400	409	423	438	468
40	Ajmer	432	442	446	465	499

Contd....

TABLE - V (Concluded)

Sl. No.	Centre	2002	2003	2004	2005	2006
1	2	3	4	5	6	7
41	Jodhpur	388	398	408	430	457
42	Gangtok	448	459	470	480	497
43	Chennai	481	498	515	537	560
44	Coimbatore	469	491	501	519	559
45	Madurai	452	464	472	490	512
46	Salem	444	459	468	487	508
47	Tiruchirapalli	436	451	463	479	500
48	Agartala	457	485	500	520	551
49	Lucknow	378	395	419	432	457
50	Agra	396	409	432	455	483
51	Allahabad	423	443	465	503	537
52	Kanpur	368	383	400	413	441
53	Meerut	364	379	400	413	444
54	Kolkata	361	377	395	412	432
55	Asansol	408	411	435	463	480
56	Kharagpur	390	405	421	440	482
57	Siliguri	427	440	453	474	488
58	Chandigarh	474	516	551	596	629
59	Delhi	408	422	438	468	492
60	Goa*	360	370	385	396	416
All – India		402	416	432	451	478

* Converted from Base Year 1982- 83=100

Source : Central Statistical Organisation, New Delhi.

TABLE VI
Consumer Price Index Numbers for Urban Non-Manual Employees
(Base: 1984-85=100)
Fiscal Year Averages

Sl. No.	Centre	2002-03	2003-04	2004-05	2005-06	2006-07
1	2	3	4	5	6	7
1	Hyderabad	427	440	459	488	526
2	Kurnool	416	426	439	456	482
3	Vijayawada	455	477	496	517	539
4	Visakhapattanam	414	429	441	465	493
5	Warangal	428	442	455	479	518
6	Guwahati	402	414	428	451	482
7	Patna	366	382	396	418	451
8	Muzaffarpur	390	411	423	450	494
9	Ranchi	372	419	415	443	489
10	Ahmedabad	361	371	385	400	426
11	Bhavnagar	403	413	423	435	466
12	Rajkot	369	380	393	408	434
13	Surat	355	360	364	383	421
14	Rohtak	440	454	463	481	517
15	Shimla	409	430	444	462	490
16	Srinagar	403	419	430	449	477
17	Jammu	404	418	430	453	480
18	Bangalore	424	442	456	480	513
19	Gulbarga	395	407	428	451	477
20	Hubli	414	434	459	485	517
21	Mangalore	409	440	454	474	507
22	Trivandrum	406	426	449	479	507
23	Calicut	383	395	409	430	447
24	Bhopal	386	391	394	417	458
25	Gwalior	432	449	463	486	525
26	Indore	397	413	427	452	485
27	Jabalpur	368	376	387	404	437
28	Mumbai	406	415	434	450	478
29	Aurangabad	443	470	486	499	547
30	Nagpur	388	407	421	438	469
31	Pune	421	439	453	471	509
32	Solapur	386	402	412	425	450
33	Imphal	378	398	405	437	468
34	Shillong	422	435	445	466	499
35	Kohima	453	464	493	540	573
36	Cuttak	390	412	428	447	479
37	Sambalpur	345	358	370	386	409
38	Amritsar	343	355	369	381	402
39	Jaipur	403	411	427	443	477
40	Ajmer	435	443	449	471	509

Contd...

TABLE VI (Concluded)

Sl. No.	Centre	2002-03	2003-04	2004-05	2005-06	2006-07
1	2	3	4	5	6	7
41	Jodhpur	391	400	412	435	465
42	Gangtok	452	462	472	482	507
43	Chennai	486	502	520	543	569
44	Coimbatore	474	495	505	528	571
45	Madurai	454	466	474	496	517
46	Salem	448	461	472	492	516
47	Tiruchirapalli	441	454	467	484	507
48	Agartala	463	492	502	526	561
49	Lucknow	383	401	421	438	465
50	Agra	398	415	436	462	492
51	Allahabad	427	450	471	513	545
52	Kanpur	372	388	402	418	450
53	Meerut	367	385	404	419	451
54	Kolkata	364	382	398	416	439
55	Asansol	408	415	444	466	484
56	Kharagpur	394	409	423	449	493
57	Siliguri	430	444	457	477	495
58	Chandigarh	482	525	561	605	637
59	Delhi	412	425	446	472	499
60	Goa*	361	375	386	401	425
All India		405	420	436	456	486

*Converted from Base Year 1982-83=100

Source : Central Statistical Organisation, New Delhi

TABLE VII**Average Wholesale Prices of some important commodities in Panaji Market****(In Rupees)**

Year / Month	Rice Raw fine Quintal	Rice Raw coarse Quintal	Rice Boiled coarse Quintal	Wheat-Khandwa Superior quality Quintal	Turdal (Barsi / Indori) Superior quality Quintal	Gram Watana Superior quality White Quintal	Moong Medium Quintal	Coconut oil Pure clean Tin of 15 Kgs.
1	2	3	4	5	6	7	8	9
2001	1485.08	1039.58	1080.00	1059.75	2359.00	1369.25	2541.42	642.75
2002	1522.50	1216.21	1250.21	1168.54	2893.85	1697.81	2791.87	811.94
2003	1508.85	1146.87	1153.71	1142.81	2528.44	1582.92	2449.48	1019.24
2004	1429.48	1200.52	1062.60	1109.06	2435.94	1506.02	2267.08	1387.28
2005	1490.10	1257.29	1226.77	1228.75	2518.84	1448.54	2661.88	1157.60
2006	1460.62	1496.46	1431.25	1409.06	2911.35	1567.08	3705.21	1155.00
January, 06	1425.00	1325.00	1293.75	1275.00	2625.00	1350.00	3200.00	1143.75
February, 06	1375.00	1468.75	1343.75	1377.50	2657.50	1362.50	3200.00	1175.00
March, 06	1418.75	1418.75	1375.00	1325.00	2650.00	1367.50	3225.00	1125.00
April, 06	1450.00	1475.00	1362.50	1400.00	3125.00	1450.00	3537.50	1225.00
May, 06	1631.25	1535.00	1381.25	1400.00	3122.50	1550.00	3900.00	1250.00
June, 06	1550.00	1700.00	1562.50	1425.00	3087.50	1600.00	3900.00	1300.00
July, 06	1615.00	1600.00	1506.25	1462.50	3082.50	1600.00	3850.00	1306.25
August, 06	1625.00	1625.00	1522.50	1443.75	3081.25	1712.50	3800.00	1335.00
September, 06	1400.00	1450.00	1350.00	1400.00	3050.00	1662.50	3900.00	1050.00
October, 06	1337.50	1460.00	1350.00	1400.00	3055.00	1650.00	3950.00	1075.00
November, 06	1350.00	1450.00	1350.00	1450.00	2700.00	1775.00	4000.00	950.00
December, 06	1350.00	1450.00	1350.00	1550.00	2700.00	1725.00	4000.00	925.00

TABLE VII (Concluded) - Panaji Market**(In Rupees)**

Year / Month	Groundnut oil, pure, clean Tin of 15 kgs	Vanaspati Tin of 15 kgs	Chillies, dry, Byadgi, long, Superior quality Quintal	Potato (Belgaum) Medium quality Quintal	Onion (N.I.) Medium quality Quintal	Coconut (Indigenous) Medium size Per 1000	Sugar (N.I.) Medium Open market Quintal	Gur (Belgaum) Medium quality Quintal
1	10	11	12	13	14	15	16	17
2001	759.67	578.00	6393.75	799.50	663.00	3205.17	1416.67	1376.00
2002	861.77	668.75	7215.35	947.08	544.58	3939.79	1303.54	1508.79
2003	963.23	752.05	6155.21	648.23	498.65	5271.18	1239.38	1490.00
2004	1068.23	789.50	6735.42	658.27	619.41	6493.12	1417.21	1543.12
2005	996.46	801.67	6193.23	848.65	620.52	5201.88	1836.98	1906.67
2006	1060.21	737.23	6666.67	977.92	598.02	4946.88	1866.88	1988.02
January, 06	975.00	700.00	5475.00	1000.00	678.75	4718.75	1928.75	1975.00
February, 06	981.25	700.00	5475.00	1025.00	675.00	4643.75	1906.25	1975.00
March, 06	1006.25	700.00	6100.00	1025.00	712.50	4750.00	1942.50	1987.50
April, 06	1107.50	737.50	6250.00	1050.00	550.00	5175.00	1837.50	2050.00
May, 06	1156.25	736.25	6350.00	968.75	541.25	5100.00	1905.00	2081.25
June, 06	1200.00	733.75	6825.00	1013.75	525.00	4850.00	1892.50	2106.25
July, 06	1192.50	734.25	6925.00	981.25	625.00	4875.00	1907.50	2056.25
August, 06	1228.75	730.00	7025.00	1006.25	551.25	4925.00	1905.00	2025.00
September, 06	962.50	770.00	7025.00	910.00	575.00	5300.00	1890.00	2000.00
October, 06	937.50	770.00	7150.00	905.00	550.00	5100.00	1862.50	2000.00
November, 06	975.00	770.00	7650.00	925.00	605.00	5250.00	1725.00	1800.00
December, 06	1000.00	765.00	7750.00	925.00	587.50	4675.00	1700.00	1800.00

TABLE VIII**Average Wholesale Prices of some important commodities in Margao Market****(In Rupees)**

Year / Month	Rice Raw fine Quintal	Rice Raw coarse Quintal	Rice Boiled coarse Quintal	Wheat-Khandwa Superior quality Quintal	Turdal (Barsi / Indori) Superior quality Quintal	Gram Watana Superior quality White Quintal	Moong Medium Quintal	Coconut oil Pure clean Tin of 15 Kgs.
1	2	3	4	5	6	7	8	9
2001	1490.58	1029.17	1083.33	976.67	2275.08	1347.92	2503.25	608.00
2002	1136.46	1070.00	1105.00	1128.12	2440.62	1473.96	2506.25	826.25
2003	1258.33	1191.67	1201.04	1219.79	2545.83	1540.62	2360.42	838.75
2004	1352.08	1370.83	1305.21	1240.62	2739.58	1563.62	2209.37	1200.00
2005	1366.67	1364.58	1375.00	1261.46	2397.92	1478.12	2656.25	1179.17
2006	1355.21	1450.00	1338.54	1370.83	2917.71	1612.50	3651.04	1041.67
January, 06	1350.00	1450.00	1350.00	1250.00	2650.00	1350.00	2850.00	1150.00
February, 06	1350.00	1450.00	1350.00	1250.00	2675.00	1375.00	3225.00	1175.00
March, 06	1350.00	1450.00	1350.00	1250.00	2700.00	1375.00	3100.00	1175.00
April, 06	1350.00	1450.00	1350.00	1250.00	3000.00	1450.00	4000.00	1100.00
May, 06	1350.00	1450.00	1350.00	1275.00	3100.00	1600.00	3950.00	1100.00
June, 06	1350.00	1450.00	1350.00	1337.50	3100.00	1625.00	3925.00	1100.00
July, 06	1350.00	1450.00	1350.00	1362.50	3100.00	1625.00	3850.00	1000.00
August, 06	1350.00	1450.00	1350.00	1425.00	2962.50	1650.00	3837.50	1000.00
September, 06	1362.50	1450.00	1362.50	1500.00	2925.00	1700.00	3075.00	1000.00
October, 06	1350.00	1450.00	1350.00	1500.00	3000.00	1900.00	4000.00	900.00
November, 06	1350.00	1450.00	1350.00	1500.00	2950.00	1900.00	4000.00	900.00
December, 06	1400.00	1450.00	1350.00	1550.00	2850.00	1800.00	4000.00	900.00

TABLE VIII (Concluded) - Margao Market**(In Rupees)**

Year / Month	Groundnut oil, pure, clean Tin of 15 kgs	Vanaspati Tin of 15 kgs	Chillies, dry, Byadgi, long, Superior quality Quintal	Potato (Belgaum) Medium quality Quintal	Onion (N.I.) Medium quality Quintal	Coconut (Indigenous) Medium size Per 1000	Sugar (N.I.) Medium Open market Quintal	Gur (Belgaum) Medium quality Quintal
1	10	11	12	13	14	15	16	17
2001	717.75	556.58	6356.25	740.92	600.75	2995.92	1428.00	1339.83
2002	765.62	662.50	6437.50	830.83	508.85	3738.54	1352.92	1477.50
2003	804.17	716.35	6081.25	683.96	639.27	5457.29	1289.17	1350.00
2004	1100.00	774.50	6875.00	781.25	678.54	5833.33	1478.08	1881.25
2005	941.15	726.25	6222.92	739.58	661.46	5062.50	1792.50	2056.25
2006	959.90	744.58	6793.75	1005.21	571.83	5016.67	1837.50	1989.58
January, 06	975.00	700.00	5500.00	1100.00	812.50	5000.00	1820.00	2000.00
February, 06	975.00	700.00	5500.00	1050.00	762.50	5000.00	1930.00	1900.00
March, 06	968.75	720.00	6300.00	937.50	425.00	5000.00	1930.00	1875.00
April, 06	950.00	740.00	6300.00	950.00	400.00	5000.00	1820.00	2000.00
May, 06	950.00	750.00	6300.00	950.00	462.00	5100.00	1950.00	2000.00
June, 06	950.00	745.00	6800.00	950.00	462.50	5100.00	1880.00	2000.00
July, 06	950.00	740.00	7275.00	950.00	500.00	5200.00	1840.00	2000.00
August, 06	950.00	760.00	7400.00	975.00	562.50	5200.00	1820.00	2100.00
September, 06	950.00	760.00	7500.00	1000.00	625.00	5200.00	1800.00	2100.00
October, 06	950.00	780.00	7500.00	1100.00	650.00	5000.00	1760.00	2000.00
November, 06	950.00	760.00	7550.00	1100.00	600.00	4700.00	1780.00	2000.00
December, 06	1000.00	780.00	7600.00	1000.00	600.00	4700.00	1720.00	1900.00

TABLE IX**Average Wholesale Prices of some important commodities in Mapusa Market****(In Rupees)**

Year / Month	Rice Raw fine Quintal	Rice Raw coarse Quintal	Rice Boiled coarse Quintal	Wheat-Khandwa Superior quality Quintal	Turdal (Barsi / Indori) Superior quality Quintal	Gram Watana Superior quality White Quintal	Moong Medium Quintal	Coconut oil Pure clean Tin of 15 Kgs.
1	2	3	4	5	6	7	8	9
2001	1499.83	1005.25	1045.83	1027.08	2323.00	1393.75	2450.00	687.17
2002	1438.54	1003.12	1159.37	1032.50	2459.37	1414.58	2363.54	816.98
2003	1368.75	1016.67	1068.33	1081.25	2447.92	1562.50	2329.17	921.87
2004	1687.50	1069.17	989.79	1113.75	2664.58	1612.50	2291.67	1225.00
2005	1429.17	1133.33	1325.00	1203.75	2458.33	1470.83	2550.00	1264.58
2006	1351.04	1454.17	1403.12	1391.67	2925.00	1615.62	3712.50	1033.33
January, 06	1350.00	1450.00	1300.00	1250.00	2650.00	1350.00	3200.00	1150.00
February, 06	1350.00	1450.00	1300.00	1250.00	2700.00	1400.00	3250.00	1175.00
March, 06	1350.00	1450.00	1300.00	1300.00	2700.00	1375.00	3100.00	1175.00
April, 06	1350.00	1450.00	1300.00	1250.00	3000.00	1450.00	4000.00	1100.00
May, 06	1350.00	1412.50	1300.00	1300.00	3100.00	1600.00	3950.00	1100.00
June, 06	1350.00	1412.50	1300.00	1375.00	3100.00	1625.00	3850.00	1000.00
July, 06	1350.00	1450.00	1300.00	1375.00	3050.00	1537.50	3800.00	1000.00
August, 06	1362.50	1475.00	1300.00	1500.00	2962.50	1700.00	3575.00	1000.00
September, 06	1350.00	1550.00	1450.00	1525.00	3162.50	1800.00	3825.00	1000.00
October, 06	1350.00	1450.00	1450.00	1500.00	3000.00	1900.00	4000.00	900.00
November, 06	1350.00	1450.00	1350.00	1525.00	2875.00	1850.00	4000.00	900.00
December, 06	1350.00	1450.00	1350.00	1550.00	2800.00	1800.00	4000.00	900.00

TABLE IX (Concluded) - Mapusa Market**(In Rupees)**

Year / Month	Groundnut oil, pure, clean Tin of 15 kgs	Vanaspatti Tin of 15 kgs	Chillies, dry, Byadgi, long, Superior quality Quintal	Potato (Belgaum) Medium quality Quintal	Onion (N.I.) Medium quality Quintal	Coconut (Indigenous) Medium size Per 1000	Sugar (N.I.) medium Open market Quintal	Gur (Belgaum) Medium quality Quintal
1	10	11	12	13	14	15	16	17
2001	754.17	554.00	6264.58	753.17	604.25	3235.42	1442.17	1366.92
2002	727.50	517.50	7041.67	879.69	521.87	4479.17	1372.71	1331.25
2003	753.08	727.50	7250.00	830.83	507.50	6154.17	1190.00	1252.08
2004	950.08	784.50	6666.67	792.08	723.96	9116.04	1520.83	1845.83
2005	895.83	791.67	6041.67	745.63	680.00	5162.50	1794.79	2021.88
2006	962.71	747.50	6691.67	1003.12	590.62	4983.33	1827.92	1977.08
January, 06	975.00	700.00	5500.00	1100.00	812.50	5000.00	1875.00	1950.00
February, 06	975.00	700.00	5500.00	1000.00	700.00	5000.00	1930.00	1900.00
March, 06	962.50	720.00	6300.00	937.50	425.00	5000.00	1930.00	1875.00
April, 06	950.00	740.00	6300.00	950.00	400.00	5000.00	1820.00	2000.00
May, 06	950.00	750.00	6550.00	950.00	412.50	5050.00	1915.00	2000.00
June, 06	950.00	740.00	7000.00	950.00	500.00	5200.00	1840.00	2000.00
July, 06	950.00	750.00	7025.00	950.00	487.50	5200.00	1840.00	2050.00
August, 06	950.00	760.00	7025.00	1000.00	650.00	5200.00	1800.00	2100.00
September, 06	1025.00	800.00	7100.00	1050.00	775.00	4900.00	1750.00	2000.00
October, 06	950.00	770.00	7200.00	1100.00	625.00	4850.00	1755.00	2000.00
November, 06	1000.00	770.00	7350.00	1050.00	600.00	4700.00	1740.00	1950.00
December, 06	915.00	770.00	7450.00	1000.00	700.00	4700.00	1740.00	1900.00

TABLE X**Average Retail Prices of some essential commodities of Middle Class Consumption in Goa State****(In Rupees)**

Year / Month	Rice Raw medium husked Fair Price Kg	Rice, boiled medium Open market Kg.	Rice, raw, Mill husked, Open market Kg.	Wheat, brown medium quality, Fair Price Kg.	Wheat, khandwa brown Open market Kg.	Turdal (Barsi) Superior quality Kg.	Gram Watana Medium quality Kg.	Moong Medium quality Kg.	Coconut Oil mill made Kg.
1	2	3	4	5	6	7	8	9	10
2001	8.95	13.45	11.63	8.01	11.98	27.60	15.87	28.44	57.08
2002	8.52	12.48	11.42	6.60	12.07	28.57	16.60	28.59	67.97
2003	8.95	12.42	11.78	6.60	12.66	30.22	17.24	27.93	86.10
2004	8.95	13.00	11.74	6.60	12.91	33.41	17.74	24.46	103.32
2005	8.71	13.32	12.06	6.60	12.91	32.63	17.76	29.88	100.39
2006	8.95	14.56	11.90	6.60	15.50	32.92	18.13	41.01	90.26
January, 06	8.95	13.77	13.05	6.60	13.83	32.08	17.03	35.58	98.76
February, 06	8.95	13.95	12.51	6.60	13.91	30.92	16.51	34.90	94.04
March, 06	8.95	13.90	11.67	6.60	13.92	30.30	16.18	37.14	89.26
April, 06	8.95	14.57	11.65	6.60	14.39	33.19	17.69	46.18	89.80
May, 06	8.95	14.88	11.52	6.60	15.01	33.61	17.71	47.30	89.11
June, 06	8.95	14.79	11.45	0.00	15.81	33.77	17.86	44.91	87.16
July, 06	8.95	14.69	11.92	0.00	15.83	33.48	18.10	43.10	87.80
August, 06	0.00	14.96	12.30	0.00	15.55	32.97	18.10	40.81	86.81
September, 06	8.95	15.16	12.17	0.00	16.23	33.34	18.79	38.27	89.87
October, 06	8.95	14.26	11.56	6.60	16.69	34.21	20.05	40.58	91.43
November, 06	8.95	14.74	11.49	6.60	17.32	34.00	20.08	41.51	89.91
December, 06	0.00	15.02	11.53	0.00	17.53	33.22	19.44	41.88	89.11

TABLE X (Concluded)**(In Rupees)**

Year / Month	Groundnut Oil pure, mill made Kg.	Vanaspati Kg.	Chillies, Dry Byadgi (N.I.) Kg.	Potato (N.I.) Medium quality Kg.	Onion (N.I.) Medium quality Kg.	Coconut local Medium size Kg.	Sugar		Gur Medium quality Kg.	Areca nut Kg.
							Medium quality Fair Price Kg.	Medium quality open market Kg.		
1	11	12	13	14	15	16	17	18	19	20
2001	55.75	41.44	72.43	10.12	8.60	4.46	13.25	15.52	16.21	107.60
2002	57.79	46.26	69.51	11.32	7.47	6.22	13.33	14.76	16.91	84.28
2003	72.76	53.28	71.27	9.15	8.04	7.92	13.46	13.81	16.27	88.33
2004	72.61	55.99	84.13	9.91	8.84	9.22	-	16.33	21.42	95.38
2005	73.51	56.13	65.63	11.35	11.29	9.60	15.21	19.04	23.37	97.26
2006	73.16	56.01	73.30	13.21	8.13	8.81	15.50	19.68	22.90	117.65
January, 06	74.05	53.31	63.03	15.55	10.00	7.77	15.50	19.33	23.64	105.24
February, 06	73.67	53.89	71.93	13.82	8.23	8.73	0.00	20.28	22.25	104.20
March, 06	72.70	54.01	71.25	12.25	6.87	8.95	15.50	20.12	21.84	108.57
April, 06	72.26	54.78	72.62	11.01	6.33	8.60	15.50	19.80	21.66	110.53
May, 06	71.82	55.30	70.83	12.14	6.61	8.77	15.50	20.09	22.53	125.75
June, 06	71.96	55.30	73.85	13.47	7.66	9.00	0.00	20.08	22.86	123.33
July, 06	71.84	54.85	75.00	12.68	7.73	8.90	0.00	20.01	23.27	125.53
August, 06	71.89	56.15	76.25	13.46	7.86	8.87	0.00	20.73	23.55	125.00
September, 06	72.38	58.08	75.26	12.53	8.23	8.78	15.50	19.49	23.99	122.11
October, 06	73.17	59.12	75.36	13.00	9.07	8.76	15.50	18.95	23.45	120.00
November, 06	75.50	58.49	74.78	13.40	7.95	8.76	15.50	18.75	23.12	120.24
December, 06	76.63	58.78	79.38	15.20	10.98	9.82	0.00	18.49	22.60	121.32

**STATISTICAL
TABLES**

**YEAR
2007**

TABLE NO. 1.**Scale of Ration Fixed for Distribution of Different Commodities during 2007**

Sl. No.	Commodity	Month	Quota Per Card			
			APL	BPL	AAY	ANP
1	2	3	4	5	6	7
1.	Rice	February & March May & July April June	20 Kgs 3 Kgs 10 Kgs 3 Kgs	29 Kgs 29 Kgs 28 Kgs 30 Kgs	35 Kgs 35 Kgs 35 Kgs 35 Kgs	10 Kgs -- -- --
2.	Wheat	February, March & May April June July	10 Kgs 4 Kgs 2 Kgs 3 kgs	-- -- -- --	-- -- -- --	-- -- -- --
3.	Sugar	February	--	1 Kg per unit of ration card @ Rs. 15.50 per Kg		
4.	Palmolein oil	--	--			

Abbreviation: APL - Above Poverty Line
BPL – Below Poverty Line
AAY - Antodaya Anna Yojna
ANP - Annapurna

Source: Directorate of Civil Supplies & Price Control, Panaji.

TABLE II**Consumer Price Index Numbers for Middle Class Non Manual Employees in Goa****Base: 1982 - 83 = 100 w.e.f. July, '90.**

Year / Month	General Index		Percentage variation over the previous year on revised base	Food, Beverages & Tobacco Index	Fuel & Light Index	Housing Index	Clothing Bedding & Footwear Index	Miscellaneous Index
	Old Base (1966=100)	Revised Base (1982-83=100)						
1	2	2(a)	3	4	5	6	7	8
2002	1433	518	4.44	597	382	391	437	484
2003	1478	533	2.90	625	385	401	437	477
2004	1534	554	3.94	646	430	411	448	509
2005	1601	578	4.15	675	431	424	490	530
2006	1678	606	4.62	712	453	434	508	555
2007	1794	648	6.93	769	470	444	548	589
January, 07	1753	633		741	469	441	546	586
February, 07	1762	636		748	469	441	546	586
March, 07	1773	640		756	469	441	546	586
April, 07	1787	645		766	469	441	546	586
May, 07	1809	653		784	469	441	546	586
June, 07	1839	664		808	469	441	546	586
July, 07	1845	666		806	470	446	550	592
August, 07	1834	662		797	470	446	550	592
September, 07	1792	647		765	470	446	550	592
October, 07	1781	643		756	470	446	550	592
November, 07	1773	640		750	470	446	550	592
December, 07	1776	641		752	470	446	550	592

Converted on Old Base with conversion factor 2.77

Source: Directorate of Planning, Statistics & Evaluation, Panaji - Goa.

TABLE III
Consumer Price Index for the Industrial Workers in Goa

Base: 2001 = 100 w.e.f. January, '06

Year / Month	General Index			Percentage variation over the previous year on revised base	Food Group Index	Pan,Supari, tobacco & Intoxicants Index	Fuel & Light Index	Housing Index	Clothing Bedding & Footwear Index	Miscellaneous Index
	Old Base (1966=100)	Revised Base (1982=100)	Revised Base (2001=100)							
1	2*	2(a)**	2(b)	3	4	5	6	7	8	9
2002	1958	576	--	3.78	583	583	557	705	299	557
2003	2014	592	--	2.78	598	604	564	747	304	567
2004	2086	614	--	3.72	612	622	569	831	311	586
2005	2155	634	--	3.26	620	640	548	961	321	598
2006	2305	678	121	6.94	123	109	117	120	116	122
2007	2471	727	130	7.23	139	112	119	126	119	124
January, 07	2414	710	127		133	109	118	125	119	123
February, 07	2414	710	127		133	109	118	125	119	123
March, 07	2414	710	127		133	109	118	125	119	123
April, 07	2434	716	128		135	112	118	125	119	123
May, 07	2472	727	130		139	112	120	125	120	123
June, 07	2489	732	131		142	112	120	125	120	123
July, 07	2526	743	133		146	112	120	126	120	123
August, 07	2526	743	133		146	113	119	126	120	124
September, 07	2472	727	130		139	113	119	126	120	124
October, 07	2472	727	130		139	113	119	126	120	124
November, 07	2509	738	132		143	114	119	126	115	124
December, 07	2509	738	132		144	114	119	126	115	125

* Converted on Old Base with conversion factor 3.40

**Converted on Old Base with conversion factor 5.59

Base: 1982 = 100 w.e.f. October, '88 to December '05

Source: Labour Bureau, Shimla.

TABLE IV**All India Consumer Price Index Numbers**

Year / Month	General Index for Urban Non-Manual Employees		General Index for Industrial workers		
	Old Base (1960 = 100)	Revised Base (1984- 85 = 100)	Old Base (1960 = 100)	Revised Base (1982 =100)	Revised Base (2001 =100)
1	2	2(a)*	3	3(a)+	3(b)#
2002	2135	401	2353	477	--
2003	2215	416	2443	496	--
2004	2296	432	2535	514	--
2005	2399	451	2642	536	--
2006	2541	478	3387	687	123
2007	2706	509	3603	731	131
January, 07	2639	496	3500	710	127
February, 07	2644	497	3528	716	128
March, 07	2649	498	3500	710	127
April, 07	2665	501	3528	716	128
May, 07	2676	503	3555	721	129
June, 07	2692	506	3583	727	130
July, 07	2734	514	3638	738	132
August, 07	2740	515	3665	743	133
September, 07	2745	516	3665	743	133
October, 07	2766	520	3693	749	134
November, 07	2761	519	3693	749	134
December, 07	2756	518	3693	749	134

* Applied conversion factor 5.32 to derive old Index

+ Applied conversion factor 4.93 to derive old Index

Applied conversion factor 5.59 to derive old Index

Source : (1) For Urban Non-Manual Employees Index – Central Statistical Organisation, New Delhi.

(2) For Industrial Workers – Labour Bureau, Shimla

TABLE - V**Consumer Price Index Numbers for Urban Non-Manual Employees****(Base : 1984- 85=100)****Calendar year Averages**

Sl. No.	Centre	2003	2004	2005	2006	2007
1	2	3	4	5	6	7
1	Hyderabad	438	452	482	514	553
2	Kurnool	424	435	452	473	506
3	Vijayawada	472	492	511	532	555
4	Visakhapattanam	425	438	458	484	520
5	Warangal	440	451	472	507	552
6	Guwahati	410	424	445	474	505
7	Patna	378	393	412	441	476
8	Muzaffarpur	406	421	442	482	521
9	Ranchi	411	411	434	479	512
10	Ahmedabad	369	380	397	417	444
11	Bhavnagar	411	419	433	456	488
12	Rajkot	380	387	407	522	456
13	Surat	359	363	376	413	439
14	Rohtak	452	461	475	506	537
15	Shimla	425	440	457	482	509
16	Srinagar	416	425	445	468	503
17	Jammu	414	426	447	472	502
18	Bangalore	437	453	473	504	537
19	Gulbarga	403	422	447	468	505
20	Hubli	428	451	486	502	539
21	Mangalore	435	451	468	498	525
22	Trivandrum	421	443	471	501	526
23	Calicut	393	404	427	442	467
24	Bhopal	390	393	409	450	473
25	Gwalior	445	459	480	513	553
26	Indore	408	423	445	477	501
27	Jabalpur	373	384	400	425	462
28	Mumbai	412	430	446	469	498
29	Aurangabad	462	484	496	532	577
30	Nagpur	402	417	433	461	482
31	Pune	433	449	466	498	537
32	Solapur	397	411	421	441	474
33	Imphal	393	405	425	460	495
34	Shillong	432	443	458	488	549
35	Kohima	460	482	530	564	609
36	Cuttak	407	425	441	469	502
37	Sambalpur	354	367	382	402	428
38	Amritsar	352	366	377	396	418
39	Jaipur	409	423	438	468	503
40	Ajmer	442	446	465	499	528

Contd....

TABLE - V (Concluded)

Sl. No.	Centre	2003	2004	2005	2006	2007
1	2	3	4	5	6	7
41	Jodhpur	398	408	430	457	482
42	Gangtok	459	470	480	497	528
43	Chennai	498	515	537	560	599
44	Coimbatore	491	501	519	559	598
45	Madurai	464	472	490	512	536
46	Salem	459	468	487	508	536
47	Tiruchirapalli	451	463	479	500	529
48	Agartala	485	500	520	551	582
49	Lucknow	395	419	432	457	480
50	Agra	409	432	455	483	513
51	Allahabad	443	465	503	537	565
52	Kanpur	383	400	413	441	475
53	Meerut	379	400	413	444	471
54	Kolkata	377	395	412	432	467
55	Asansol	411	435	463	480	499
56	Kharagpur	405	421	440	482	524
57	Siliguri	440	453	474	488	517
58	Chandigarh	516	551	596	629	659
59	Delhi	422	438	468	492	516
60	Goa*	370	385	396	416	449
All – India		416	432	451	478	509

* Converted from Base Year 1982- 83=100

Source : Central Statistical Organisation, New Delhi

TABLE VI
Consumer Price Index Numbers for Urban Non-Manual Employees
(Base: 1984-85=100)
Fiscal Year Averages

Sl. No.	Centre	2003-04	2004-05	2005-06	2006-07	2007-08
1	2	3	4	5	6	7
1	Hyderabad	440	459	488	526	560
2	Kurnool	426	439	456	482	516
3	Vijayawada	477	496	517	539	559
4	Visakhapattanam	429	441	465	493	527
5	Warangal	442	455	479	518	562
6	Guwahati	414	428	451	482	512
7	Patna	382	396	418	451	484
8	Muzaffarpur	411	423	450	494	528
9	Ranchi	419	415	443	489	519
10	Ahmedabad	371	385	400	426	449
11	Bhavnagar	413	423	435	466	491
12	Rajkot	380	393	408	434	461
13	Surat	360	364	383	421	443
14	Rohtak	454	463	481	517	541
15	Shimla	430	444	462	490	511
16	Srinagar	419	430	449	477	513
17	Jammu	418	430	453	480	511
18	Bangalore	442	456	480	513	546
19	Gulbarga	407	428	451	477	518
20	Hubli	434	459	485	517	545
21	Mangalore	440	454	474	507	529
22	Trivandrum	426	449	479	507	535
23	Calicut	395	409	430	447	474
24	Bhopal	391	394	417	458	482
25	Gwalior	449	463	486	525	559
26	Indore	413	427	452	485	507
27	Jabalpur	376	387	404	437	467
28	Mumbai	415	434	450	478	504
29	Aurangabad	470	486	499	547	583
30	Nagpur	407	421	438	469	486
31	Pune	439	453	471	509	547
32	Solapur	402	412	425	450	481
33	Imphal	398	405	437	468	506
34	Shillong	435	445	466	499	565
35	Kohima	464	493	540	573	623
36	Cuttak	412	428	447	479	507
37	Sambalpur	358	370	386	409	435
38	Amritsar	355	369	381	402	423
39	Jaipur	411	427	443	477	516
40	Ajmer	443	449	471	509	532

Contd...

TABLE VI (Concluded)

Sl. No.	Centre	2003-04	2004-05	2005-06	2006-07	2007-08
1	2	3	4	5	6	7
41	Jodhpur	400	412	435	465	487
42	Gangtok	462	472	482	507	533
43	Chennai	502	520	543	569	605
44	Coimbatore	495	505	528	571	604
45	Madurai	466	474	496	517	544
46	Salem	461	472	492	516	544
47	Tiruchirapalli	454	467	484	507	539
48	Agartala	492	502	526	561	587
49	Lucknow	401	421	438	465	484
50	Agra	415	436	462	492	518
51	Allahabad	450	471	513	545	571
52	Kanpur	388	402	418	450	481
53	Meerut	385	404	419	451	478
54	Kolkata	382	398	416	439	476
55	Asansol	415	444	466	484	506
56	Kharagpur	409	423	449	493	534
57	Siliguri	444	457	477	495	521
58	Chandigarh	525	561	605	637	665
59	Delhi	425	446	472	499	521
60	Goa*	375	386	401	425	456
All India		420	436	456	486	515

* Converted from Base Year 1982-83=100

Source : Central Statistical Organisation, New Delhi.

TABLE VII**Average Wholesale Prices of some important commodities in Panaji Market****(In Rupees)**

Year / Month	Rice Raw fine Quintal	Rice Raw coarse Quintal	Rice Boiled coarse Quintal	Wheat-Khandwa Superior quality Quintal	Turdal (Barsi / Indori) Superior quality Quintal	Gram Watana Superior quality White Quintal	Moong medium Quintal	Coconut oil Pure clean Tin of 15 Kgs.
1	2	3	4	5	6	7	8	9
2002	1522.50	1216.21	1250.21	1168.54	2893.85	1697.81	2791.87	811.94
2003	1508.85	1146.87	1153.71	1142.81	2528.44	1582.92	2449.48	1019.24
2004	1429.48	1200.52	1062.60	1109.06	2435.94	1506.02	2267.08	1387.28
2005	1490.10	1257.29	1226.77	1228.75	2518.84	1448.54	2661.88	1157.60
2006	1460.62	1496.46	1431.25	1409.06	2911.35	1567.08	3705.21	1155.00
2007	1426.46	1455.21	1456.46	1548.54	3547.92	1877.08	3742.71	1002.08
January, 07	1412.50	1430.00	1400.00	1557.50	3100.00	1725.00	3937.50	900.00
February, 07	1437.50	1455.00	1462.50	1507.50	3150.00	1725.00	3837.50	900.00
March, 07	1355.00	1455.00	1450.00	1505.00	3200.00	1725.00	4000.00	900.00
April, 07	1425.00	1465.00	1455.00	1555.00	3300.00	1800.00	4000.00	950.00
May, 07	1412.50	1465.00	1460.00	1512.50	3400.00	1825.00	3987.50	987.50
June, 07	1412.50	1455.00	1460.00	1565.00	3400.00	1825.00	3900.00	987.50
July, 07	1425.00	1462.00	1465.00	1555.00	3400.00	1825.00	3750.00	1025.00
August, 07	1412.50	1450.00	1465.00	1600.00	3625.00	1950.00	3550.00	1025.00
September, 07	1450.00	1425.00	1465.00	1575.00	3950.00	1975.00	3550.00	1025.00
October, 07	1450.00	1450.00	1465.00	1555.00	4000.00	2025.00	3550.00	1025.00
November, 07	1462.50	1475.00	1465.00	1530.00	4025.00	2075.00	3550.00	1050.00
December, 07	1462.50	1475.00	1465.00	1565.00	4025.00	2050.00	3300.00	1250.00

TABLE VII (Concluded) - Panaji Market**(In Rupees)**

Year / Month	Groundnut oil, pure, clean Tin of 15 kgs	Vanaspati Tin of 15 kgs	Chillies, dry, Byadgi, long, Superior quality Quintal	Potato (Belgaum) Medium quality Quintal	Onion (N.I.) Medium quality Quintal	Coconut (Indigenous) Medium size Per 1000	Sugar (N.I.) medium Open market Quintal	Gur (Belgaum) Medium quality Quintal
1	10	11	12	13	14	15	16	17
2002	861.77	668.75	7215.35	947.08	544.58	3939.79	1303.54	1508.79
2003	963.23	752.05	6155.21	648.23	498.65	5271.18	1239.38	1490.00
2004	1068.23	789.50	6735.42	658.27	619.41	6493.12	1417.21	1543.12
2005	996.46	801.67	6193.23	848.65	620.52	5201.88	1836.98	1906.67
2006	1060.21	737.23	6666.67	977.92	598.02	4946.88	1866.88	1988.02
2007	1022.92	827.50	8164.58	1130.83	1075.21	4919.79	1406.25	1609.38
January, 07	1000.00	790.00	7900.00	912.50	1350.00	4925.00	1500.00	1500.00
February, 07	1000.00	790.00	7900.00	912.50	1200.00	4925.00	1525.00	1500.00
March, 07	1000.00	790.00	7900.00	905.00	850.00	4937.50	1475.00	1500.00
April, 07	1000.00	795.00	7950.00	937.50	875.00	4875.00	1475.00	1525.00
May, 07	1000.00	805.00	7900.00	945.00	950.00	4850.00	1450.00	1575.00
June, 07	1000.00	835.00	7900.00	952.50	952.50	4850.00	1400.00	1575.00
July, 07	1000.00	860.00	8050.00	1200.00	1100.00	4850.00	1380.00	1600.00
August, 07	1000.00	850.00	8750.00	1175.00	1200.00	4950.00	1350.00	1725.00
September, 07	1000.00	850.00	8650.00	1325.00	1275.00	5050.00	1330.00	1750.00
October, 07	1025.00	845.00	8525.00	1375.00	1350.00	5025.00	1330.00	1725.00
November, 07	1000.00	850.00	8250.00	1462.50	950.00	4950.00	1330.00	1700.00
December, 07	1250.00	870.00	8300.00	1467.50	850.00	4850.00	1330.00	1637.50

TABLE VIII**Average Wholesale Prices of some important commodities in Margao Market****(In Rupees)**

Year / Month	Rice Raw fine Quintal	Rice Raw coarse Quintal	Rice Boiled coarse Quintal	Wheat-Khandwa Superior quality Quintal	Turdal (Barsi / Indori) Superior quality Quintal	Gram Watana Superior quality White Quintal	Moong Medium Quintal	Coconut oil Pure clean Tin of 15 Kgs.
1	2	3	4	5	6	7	8	9
2002	1136.46	1070.00	1105.00	1128.12	2440.62	1473.96	2506.25	826.25
2003	1258.33	1191.67	1201.04	1219.79	2545.83	1540.62	2360.42	838.75
2004	1352.08	1370.83	1305.21	1240.62	2739.58	1563.62	2209.37	1200.00
2005	1366.67	1364.58	1375.00	1261.46	2397.92	1478.12	2656.25	1179.17
2006	1355.21	1450.00	1338.54	1370.83	2917.71	1612.50	3651.04	1041.67
2007	1443.75	1446.88	1452.08	1567.71	3521.67	1929.17	3604.17	991.67
January, 07	1425.00	1425.00	1450.00	1575.00	3175.00	1750.00	3950.00	950.00
February, 07	1450.00	1450.00	1450.00	1550.00	3250.00	1700.00	3800.00	900.00
March, 07	1450.00	1450.00	1450.00	1575.00	3250.00	1750.00	3900.00	900.00
April, 07	1450.00	1450.00	1450.00	1550.00	3375.00	1850.00	3950.00	1000.00
May, 07	1450.00	1450.00	1450.00	1600.00	3400.00	1900.00	3850.00	1000.00
June, 07	1450.00	1450.00	1450.00	1600.00	3400.00	1900.00	3800.00	1000.00
July, 07	1425.00	1425.00	1450.00	1600.00	3487.50	1950.00	3400.00	1000.00
August, 07	1450.00	1450.00	1450.00	1600.00	3575.00	2000.00	3250.00	1000.00
September, 07	1450.00	1450.00	1450.00	1600.00	3625.00	2000.00	3300.00	1000.00
October, 07	1425.00	1462.50	1475.00	1550.00	3900.00	2000.00	3500.00	1000.00
November, 07	1450.00	1450.00	1450.00	1500.00	3900.00	2100.00	3400.00	1150.00
December, 07	1450.00	1450.00	1450.00	1512.50	3922.50	2250.00	3150.00	1000.00

TABLE VIII (Concluded) - Margao Market**(In Rupees)**

Year / Month	Groundnut oil, pure, clean Tin of 15 kgs	Vanaspati Tin of 15 kgs	Chillies, dry, Byadgi, long, Superior quality Quintal	Potato (Belgaum) Medium quality Quintal	Onion (N.I.) Medium quality Quintal	Coconut (Indigenous) Medium size Per 1000	Sugar (N.I.) Medium Open market Quintal	Gur (Belgaum) Medium quality Quintal
1	10	11	12	13	14	15	16	17
2002	765.62	662.50	6437.50	830.83	508.85	3738.54	1352.92	1477.50
2003	804.17	716.35	6081.25	683.96	639.27	5457.29	1289.17	1350.00
2004	1100.00	774.50	6875.00	781.25	678.54	5833.33	1478.08	1881.25
2005	941.15	726.25	6222.92	739.58	661.46	5062.50	1792.50	2056.25
2006	959.90	744.58	6793.75	1005.21	571.83	5016.67	1837.50	1989.58
2007	1077.08	823.75	8175.00	1124.38	1096.88	4605.21	1386.15	1577.08
January, 07	1075.00	780.00	7650.00	900.00	1162.50	4600.00	1515.00	1525.00
February, 07	1075.00	780.00	7800.00	800.00	1200.00	4600.00	1550.00	1550.00
March, 07	1100.00	780.00	7800.00	837.50	862.50	4600.00	1450.00	1500.00
April, 07	1100.00	800.00	7800.00	950.00	837.50	4600.00	1480.00	1450.00
May, 07	1100.00	840.00	8150.00	1150.00	950.00	4600.00	1325.00	1425.00
June, 07	1100.00	840.00	8500.00	1200.00	950.00	4600.00	1325.00	1450.00
July, 07	1100.00	840.00	8500.00	1200.00	1125.00	4600.00	1368.75	1525.00
August, 07	1000.00	840.00	8500.00	1300.00	1300.00	4600.00	1340.00	1750.00
September, 07	1000.00	835.00	8500.00	1175.00	1425.00	4600.00	1320.00	1700.00
October, 07	1000.00	840.00	8500.00	1400.00	1400.00	4600.00	1320.00	1675.00
November, 07	1150.00	860.00	8200.00	1300.00	1100.00	4600.00	1320.00	1700.00
December, 07	1125.00	850.00	8200.00	1280.00	850.00	4662.50	1320.00	1675.00

TABLE IX

Average Wholesale Prices of some important commodities in Mapusa Market

(In Rupees)

Year / Month	Rice Raw fine Quintal	Rice Raw coarse Quintal	Rice Boiled coarse Quintal	Wheat-Khandwa Superior quality Quintal	Turdal (Barsi / Indori) Superior quality Quintal	Gram Watana Superior quality White Quintal	Moong medium Quintal	Coconut oil Pure clean Tin of 15 Kgs.
1	2	3	4	5	6	7	8	9
2002	1438.54	1003.12	1159.37	1032.50	2459.37	1414.58	2363.54	816.98
2003	1368.75	1016.67	1068.33	1081.25	2447.92	1562.50	2329.17	921.87
2004	1687.50	1069.17	989.79	1113.75	2664.58	1612.50	2291.67	1225.00
2005	1429.17	1133.33	1325.00	1203.75	2458.33	1470.83	2550.00	1264.58
2006	1351.04	1454.17	1403.12	1391.67	2925.00	1615.62	3712.50	1033.33
2007	1408.33	1452.08	1450.00	1552.08	3546.46	1945.83	3625.00	979.17
January, 07	1425.00	1425.00	1450.00	1525.00	3125.00	1700.00	3850.00	900.00
February, 07	1425.00	1450.00	1450.00	1550.00	3250.00	1700.00	3800.00	900.00
March, 07	1350.00	1450.00	1450.00	1600.00	3300.00	1800.00	4000.00	950.00
April, 07	1400.00	1450.00	1450.00	1600.00	3375.00	1850.00	3950.00	1000.00
May, 07	1375.00	1450.00	1450.00	1600.00	3400.00	1900.00	3850.00	1000.00
June, 07	1425.00	1450.00	1450.00	1525.00	3400.00	1900.00	3800.00	1000.00
July, 07	1425.00	1450.00	1450.00	1525.00	3600.00	2000.00	3650.00	1000.00
August, 07	1425.00	1450.00	1450.00	1600.00	3600.00	2000.00	3400.00	1000.00
September, 07	1375.00	1450.00	1450.00	1600.00	3712.50	2000.00	3400.00	1000.00
October, 07	1400.00	1450.00	1450.00	1500.00	3950.00	2000.00	3500.00	1000.00
November, 07	1425.00	1450.00	1450.00	1500.00	3900.00	2200.00	3300.00	1000.00
December, 07	1450.00	1500.00	1450.00	1500.00	3945.00	2300.00	3000.00	1000.00

TABLE IX (Concluded) - Mapusa Market

(In Rupees)

Year / Month	Groundnut oil, pure, clean Tin of 15 kgs	Vanaspati Tin of 15 kgs	Chillies, dry, Byadgi, long, Superior quality Quintal	Potato (Belgaum) Medium quality Quintal	Onion (N.I.) Medium quality Quintal	Coconut (Indigenous) Medium size Per 1000	Sugar (N.I.) Medium Open market Quintal	Gur (Belgaum) Medium quality Quintal
1	10	11	12	13	14	15	16	17
2002	727.50	517.50	7041.67	879.69	521.87	4479.17	1372.71	1331.25
2003	753.08	727.50	7250.00	830.83	507.50	6154.17	1190.00	1252.08
2004	950.08	784.50	6666.67	792.08	723.96	9116.04	1520.83	1845.83
2005	895.83	791.67	6041.67	745.63	680.00	5162.50	1794.79	2021.88
2006	962.71	747.50	6691.67	1003.12	590.62	4983.33	1827.92	1977.08
2007	1070.83	823.75	8145.83	1115.83	1095.83	4604.17	1383.33	1566.67
January, 07	1075.00	780.00	7800.00	837.50	1225.00	4600.00	1500.00	1550.00
February, 07	1075.00	780.00	7800.00	800.00	1300.00	4600.00	1550.00	1500.00
March, 07	1100.00	780.00	7800.00	900.00	937.50	4600.00	1465.00	1525.00
April, 07	1100.00	800.00	7800.00	950.00	837.50	4600.00	1480.00	1450.00
May, 07	1100.00	840.00	7800.00	1200.00	950.00	4600.00	1325.00	1425.00
June, 07	1100.00	840.00	8500.00	1200.00	1050.00	4600.00	1325.00	1450.00
July, 07	1050.00	840.00	8500.00	1200.00	1150.00	4600.00	1345.00	1600.00
August, 07	1000.00	837.50	8500.00	1287.50	1400.00	4600.00	1330.00	1725.00
September, 07	1000.00	837.50	8500.00	1275.00	1400.00	4600.00	1320.00	1675.00
October, 07	1000.00	850.00	8350.00	1200.00	1200.00	4600.00	1320.00	1700.00
November, 07	1000.00	860.00	8200.00	1300.00	900.00	4625.00	1320.00	1700.00
December, 07	1250.00	840.00	8200.00	1240.00	800.00	4625.00	1320.00	1500.00

TABLE X

Average Retail Prices of some essential commodities of Middle Class Consumption in Goa State

(In Rupees)

Year / Month	Rice Raw Medium husked Fair Price Kg	Rice, boiled Medium Open market Kg.	Rice, raw, Mill husked, Open market Kg.	Wheat, brown Medium quality, Fair Price Kg.	Wheat, khandwa brown Open market Kg.	Turdal (Barsi) Superior quality Kg.	Gram Watana Medium quality Kg.	Moong Medium quality Kg.	Coconut Oil mill made Kg.
1	2	3	4	5	6	7	8	9	10
2002	8.52	12.48	11.42	6.60	12.07	28.57	16.60	28.59	67.97
2003	8.95	12.42	11.78	6.60	12.66	30.22	17.24	27.93	86.10
2004	8.95	13.00	11.74	6.60	12.91	33.41	17.74	24.46	103.32
2005	8.71	13.32	12.06	6.60	12.91	32.63	17.76	29.88	100.39
2006	8.95	14.56	11.90	6.60	15.50	32.92	18.13	41.01	90.26
2007	8.95	15.95	12.16	6.60	16.40	39.75	21.67	39.43	89.58
January, 07	0.00	15.75	11.41	0.00	17.63	33.36	19.27	41.93	88.10
February, 07	8.95	16.13	11.30	6.60	17.73	37.35	19.27	43.12	88.32
March, 07	8.95	16.06	11.54	6.60	16.32	38.25	19.75	42.02	88.48
April, 07	8.95	15.65	12.16	6.60	15.78	38.56	20.69	42.08	91.88
May, 07	8.95	15.36	12.19	6.60	16.07	38.97	21.67	42.30	89.32
June, 07	8.95	15.48	12.60	6.60	16.06	39.05	21.97	41.93	89.19
July, 07	8.95	15.71	12.55	6.60	16.07	39.94	22.25	40.99	88.60
August, 07	0.00	15.86	12.09	0.00	16.14	40.50	22.40	41.21	89.14
September, 07	0.00	16.01	12.46	0.00	16.14	41.22	22.26	37.21	93.19
October, 07	0.00	16.08	12.35	0.00	16.08	41.92	22.62	34.50	89.68
November, 07	0.00	16.32	12.24	0.00	16.35	42.67	22.92	32.98	89.06
December, 07	0.00	17.02	12.99	0.00	16.45	45.17	24.94	32.88	89.98

TABLE X (Concluded)

(In Rupees)

Year / Month	Groundnut Oil pure, mill made Kg.	Vanaspati Kg.	Chillies, Dry Byadgi (N.I.) Kg.	Potato (N.I.) Medium quality Kg.	Onion (N.I.) Medium quality Kg.	Coconut local Medium size Kg.	Sugar		Gur Medium quality Kg.	Arecanut Kg.
							Medium quality Fair Price Kg.	Medium quality Open market Kg.		
1	11	12	13	14	15	16	17	18	19	20
2002	57.79	46.26	69.51	11.32	7.47	6.22	13.33	14.76	16.91	84.28
2003	72.76	53.28	71.27	9.15	8.04	7.92	13.46	13.81	16.27	88.33
2004	72.61	55.99	84.13	9.91	8.84	9.22	-	16.33	21.42	95.38
2005	73.51	56.13	65.63	11.35	11.29	9.60	15.21	19.04	23.37	97.26
2006	73.16	56.01	73.30	13.21	8.13	8.81	15.50	19.68	22.90	117.65
2007	85.86	62.90	78.37	14.07	14.94	8.61	15.50	15.23	19.26	120.41
January, 07	78.16	59.46	76.44	12.84	16.25	8.76	0.00	17.52	21.11	121.25
February, 07	78.73	59.24	78.19	11.20	16.79	8.76	15.50	16.53	20.90	121.05
March, 07	77.91	59.40	78.37	11.61	12.44	8.76	0.00	16.00	19.28	120.45
April, 07	78.67	59.72	75.94	11.51	11.07	8.83	0.00	15.71	18.91	120.00
May, 07	81.63	62.50	73.90	12.63	10.50	8.76	0.00	15.38	18.55	120.00
June, 07	84.42	63.27	73.33	14.60	12.84	8.71	0.00	14.24	18.17	120.00
July, 07	86.48	63.55	77.00	15.08	15.44	8.58	0.00	14.52	18.17	120.00
August, 07	87.32	63.51	77.83	15.34	17.81	8.45	0.00	14.75	18.83	120.00
September, 07	89.50	65.11	79.00	15.51	20.72	8.50	0.00	14.63	19.61	120.00
October, 07	95.15	64.42	81.94	16.13	18.20	8.50	0.00	14.53	19.41	120.00
November, 07	96.40	66.51	84.52	16.32	15.28	8.50	0.00	14.51	19.53	120.00
December, 07	96.00	68.11	84.00	16.02	11.98	8.24	0.00	14.40	18.66	122.11



**STATISTICAL
TABLES**



**YEAR
2008**

TABLE NO. 1.**Scale of Ration Fixed for Distribution of Different Commodities during 2008**

Sl. No.	Commodity	Month	Quota Per Card			
			APL	BPL	AAY	ANP
1	2	3	4	5	6	7
1.	Rice	January & February	10 Kgs	29 Kgs	35 Kgs	10 Kgs
		March	10 Kgs	35 Kgs	35 Kgs	10 Kgs
		April	10 Kgs	35 Kgs	35 Kgs	--
		May	10 Kgs	33 Kgs	35 Kgs	--
		June	10 Kgs	32 Kgs	35 Kgs	10 Kgs
		July & August	10 Kgs	33 Kgs	35 Kgs	10 Kgs
		September	20 Kgs	32 Kgs	35 Kgs	10 Kgs
		October	20 Kgs	32 Kgs	35 Kgs	--
		November	10 Kgs	32 Kgs	35 Kgs	--
		December	20 Kgs	34 Kgs	35 Kgs	10 Kgs
		2.	Wheat	January, February & March	3 Kgs	--
April, May, June, July, August & September	1 kg			--	--	--
October & November	5 Kgs			--	--	--
December	10 Kgs			--	--	--
3.	Sugar	October & November	--	500 gms per person per month		
		December	--	1 Kg per person per month		
4.	Palmolein oil	--	--			

Abbreviation: APL - Above Poverty Line
BPL - Below Poverty Line
AAY - Antodaya Anna Yojna
ANP - Annapurna

Source: Directorate of Civil Supplies & Price Control, Panaji.

TABLE II**Consumer Price Index Numbers for Middle Class Non Manual Employees in Goa****Base: 1982 - 83 = 100 w.e.f. July, '90.**

Year / Month	General Index		Percentage variation over the previous year on revised base	Food, Beverages & Tobacco Index	Fuel & Light Index	Housing Index	Clothing, Bedding & Footwear Index	Miscellaneous Index
	Old Base (1966=100)	Revised Base (1982-83=100)						
1	2	2(a)	3	4	5	6	7	8
2003	1478	533	2.90	625	385	401	437	477
2004	1534	554	3.94	646	430	411	448	509
2005	1601	578	4.15	675	431	424	490	530
2006	1678	606	4.62	712	453	434	508	555
2007	1794	648	6.93	769	470	444	548	589
2008	1978	714	10.36	875	483	454	580	632
January, 08	1856	670		792	471	451	572	623
February, 08	1867	674		798	471	451	572	623
March, 08	1906	688		828	471	451	572	623
April, 08	1958	707		867	472	451	573	628
May, 08	1958	707		866	475	451	573	628
June, 08	1972	712		874	490	451	573	628
July, 08	2011	726		894	491	456	587	638
August, 08	2028	732		907	491	456	587	638
September, 08	2036	735		913	491	456	587	638
October, 08	2041	737		918	491	456	587	639
November, 08	2058	743		930	491	456	587	639
December, 08	2039	736		914	491	456	587	639

Converted on Old Base with conversion factor 2.77**Source: Directorate of Planning, Statistics & Evaluation, Panaji - Goa.**

TABLE III
Consumer Price Index for the Industrial Workers in Goa

Base: 2001 = 100 w.e.f. January, '06

Year / Month	General Index			Percentage variation over the previous year on revised base	Food Group Index	Pan, Supari, tobacco & Intoxicants Index	Fuel & Light Index	Housing Index	Clothing Bedding & Footwear Index	Miscellaneous Index
	Old Base (1966=100)	Revised Base (1982=100)	Revised Base (2001=100)							
1	2*	2(a)**	2(b)	3	4	5	6	7	8	9
2003	2014	592	--	2.78	598	604	564	747	304	567
2004	2086	614	--	3.72	612	622	569	831	311	586
2005	2155	634	--	3.26	620	640	548	961	321	598
2006	2305	678	121	6.94	123	109	117	120	116	122
2007	2471	727	130	7.23	139	112	119	126	119	124
2008	2738	805	144	10.73	165	117	125	129	120	130
January, 08	2526	743	133		146	114	120	127	115	125
February, 08	2567	755	135		149	115	120	127	115	125
March, 08	2584	760	136		151	115	121	127	115	126
April, 08	2621	771	138		155	116	121	127	115	127
May, 08	2757	811	145		169	116	122	127	123	129
June, 08	2774	816	146		169	116	126	127	123	130
July, 08	2795	822	147		170	117	127	130	123	131
August, 08	2812	827	148		172	117	127	130	123	131
September, 08	2812	827	148		174	117	127	130	123	131
October, 08	2890	850	152		179	118	128	130	123	135
November, 08	2870	844	151		176	118	128	130	123	135
December, 08	2853	839	150		174	120	129	130	124	137

* Converted on Old Base with conversion factor 3.40

**Converted on Old Base with conversion factor 5.59

Base: 1982 = 100 w.e.f. October, '88 to December '05

Source: Labour Bureau, Shimla.

TABLE IV**All India Consumer Price Index Numbers**

Year / Month	General Index for Urban Non-Manual Employees		General Index for Industrial workers		
	Old Base (1960 = 100)	Revised Base (1984- 85 = 100)	Old Base (1960 = 100)	Revised Base (1982 =100)	Revised Base (2001 =100)
1	2	2(a)*	3	3(a)+	3(b)#
2003	2215	416	2443	496	--
2004	2296	432	2535	514	--
2005	2399	451	2642	536	--
2006	2541	478	3387	687	123
2007	2706	509	3603	731	131
2008	2786	524	3904	792	142
January, 08	2766	520	3693	749	134
February, 08	2782	523	3722	755	135
March, 08	2809	528	3776	766	137
April, 08	N.A	N.A	3801	771	138
May, 08	N.A	N.A	3831	777	139
June, 08	N.A	N.A	3860	783	140
July, 08	N.A	N.A	3939	799	143
August, 08	N.A	N.A	3998	811	145
September, 08	N.A	N.A	4023	816	146
October, 08	N.A	N.A	4077	827	148
November, 08	N.A	N.A	4077	827	148
December, 08	N.A	N.A	4052	822	147

* Applied conversion factor 5.32 to derive old Index

+ Applied conversion factor 4.93 to derive old Index

Applied conversion factor 5.59 to derive old Index

Source :(1) For Urban Non-Manual Employees Index – Central Statistical Organisation, New Delhi.

(2) For Industrial Workers – Labour Bureau, Shimla.

TABLE V

Average Wholesale Prices of some important commodities in Panaji Market

(In Rupees)

Year / Month	Rice Raw fine Quintal	Rice Raw coarse Quintal	Rice Boiled coarse Quintal	Wheat-Khandwa Superior quality Quintal	Turdal (Barsi / Indori) Superior quality Quintal	Gram Watana Superior quality White Quintal	Moong Medium Quintal	Coconut oil Pure clean Tin of 15 Kgs.
1	2	3	4	5	6	7	8	9
2003	1508.85	1146.87	1153.71	1142.81	2528.44	1582.92	2449.48	1019.24
2004	1429.48	1200.52	1062.60	1109.06	2435.94	1506.02	2267.08	1387.28
2005	1490.10	1257.29	1226.77	1228.75	2518.84	1448.54	2661.88	1157.60
2006	1460.62	1496.46	1431.25	1409.06	2911.35	1567.08	3705.21	1155.00
2007	1426.46	1455.21	1456.46	1548.54	3547.92	1877.08	3742.71	1002.08
2008	1612.71	1634.79	1734.06	1733.33	4473.96	2728.12	3658.33	1029.17
January, 08	1625.00	1500.00	1731.25	1675.00	4212.50	2512.50	3225.00	1025.00
February, 08	1625.00	1475.00	1731.25	1625.00	4475.00	2675.00	3475.00	1025.00
March, 08	1525.00	1575.00	1731.25	1675.00	4525.00	2675.00	3825.00	1000.00
April, 08	1450.00	1655.00	1731.25	1675.00	4550.00	2675.00	3850.00	1000.00
May, 08	1625.00	1525.00	1731.25	1675.00	4425.00	2650.00	3525.00	1050.00
June, 08	1525.00	1650.00	1731.25	1662.50	4425.00	2675.00	3750.00	1025.00
July, 08	1600.00	1675.00	1731.25	1662.50	4425.00	2675.00	3750.00	1025.00
August, 08	1690.00	1625.00	1731.25	1775.00	4500.00	2875.00	3675.00	1050.00
September, 08	1675.00	1625.00	1731.25	1775.00	4550.00	2825.00	3650.00	1050.00
October, 08	1625.00	1712.50	1731.25	1775.00	4500.00	2800.00	3675.00	1050.00
November, 08	1675.00	1625.00	1731.25	1825.00	4587.50	2825.00	3675.00	1050.00
December, 08	1712.50	1975.00	1765.00	2000.00	4512.50	2875.00	3825.00	1000.00

TABLE V (Concluded) - Panaji Market

(In Rupees)

Year / Month	Groundnut oil, pure, clean Tin of 15 kgs	Vanaspatti Tin of 15 kgs	Chillies, dry, Byadgi, long, Superior quality Quintal	Potato (Belgaum) Medium quality Quintal	Onion (N.I.) Medium quality Quintal	Coconut (Indigenous) Medium size Per 1000	Sugar (N.I.) medium Open market Quintal	Gur (Belgaum) Medium Quality Quintal
1	10	11	12	13	14	15	16	17
2003	963.23	752.05	6155.21	648.23	498.65	5271.18	1239.38	1490.00
2004	1068.23	789.50	6735.42	658.27	619.41	6493.12	1417.21	1543.12
2005	996.46	801.67	6193.23	848.65	620.52	5201.88	1836.98	1906.67
2006	1060.21	737.23	6666.67	977.92	598.02	4946.88	1866.88	1988.02
2007	1022.92	827.50	8164.58	1130.83	1075.21	4919.79	1406.25	1609.38
2008	1218.75	1000.40	8698.96	934.79	863.54	4950.00	1590.83	2012.50
January, 08	975.00	1120.00	8250.00	1292.50	775.00	4950.00	1390.00	1750.00
February, 08	925.00	1112.25	8750.00	1325.00	750.00	4850.00	1425.00	1725.00
March, 08	950.00	1050.00	8750.00	775.00	575.00	4950.00	1425.00	1775.00
April, 08	975.00	995.00	8250.00	675.00	525.00	5050.00	1490.00	1875.00
May, 08	1275.00	990.00	8750.00	875.00	637.50	4900.00	1480.00	1925.00
June, 08	1262.50	995.00	8250.00	825.00	612.50	4825.00	1490.00	1837.50
July, 08	1262.50	995.00	8250.00	825.00	612.50	4825.00	1490.00	1837.50
August, 08	1375.00	1000.00	9025.00	925.00	1075.00	5050.00	1737.50	2275.00
September, 08	1425.00	995.00	9025.00	925.00	1125.00	5050.00	1787.50	2225.00
October, 08	1425.00	887.50	9025.00	925.00	1125.00	4950.00	1775.00	2275.00
November, 08	1425.00	965.00	9037.50	925.00	1075.00	5050.00	1775.00	2275.00
December, 08	1350.00	900.00	9025.00	925.00	1475.00	4950.00	1825.00	2375.00

TABLE VI

Average Wholesale Prices of some important commodities in Margao Market

(In Rupees)

Year / Month	Rice Raw fine Quintal	Rice Raw coarse Quintal	Rice Boiled coarse Quintal	Wheat-Khandwa Superior quality Quintal	Turdal (Barsi / Indori) Superior quality Quintal	Gram Watana Superior quality White Quintal	Moong Medium Quintal	Coconut oil Pure, clean Tin of 15 Kgs.
1	2	3	4	5	6	7	8	9
2003	1258.33	1191.67	1201.04	1219.79	2545.83	1540.62	2360.42	838.75
2004	1352.08	1370.83	1305.21	1240.62	2739.58	1563.62	2209.37	1200.00
2005	1366.67	1364.58	1375.00	1261.46	2397.92	1478.12	2656.25	1179.17
2006	1355.21	1450.00	1338.54	1370.83	2917.71	1612.50	3651.04	1041.67
2007	1443.75	1446.88	1452.08	1567.71	3521.67	1929.17	3604.17	991.67
2008	1592.71	1698.96	1690.00	1637.50	4360.21	2675.00	3563.54	1000.00
January, 08	1537.50	1525.00	1550.00	1525.00	3947.50	2325.00	3000.00	1000.00
February, 08	1475.00	1550.00	1550.00	1650.00	3900.00	2350.00	3000.00	1000.00
March, 08	1475.00	1575.00	1600.00	1650.00	4600.00	2650.00	3912.00	1000.00
April, 08	1475.00	1575.00	1630.00	1650.00	4500.00	2650.00	3800.00	1000.00
May, 08	1500.00	1600.00	1600.00	1625.00	4350.00	2650.00	3450.00	1000.00
June, 08	1575.00	1650.00	1700.00	1600.00	4350.00	2650.00	3400.00	1000.00
July, 08	1600.00	1675.00	1725.00	1600.00	4325.00	2725.00	3500.00	1000.00
August, 08	1675.00	1675.00	1700.00	1675.00	4400.00	2800.00	3900.00	1000.00
September, 08	1625.00	1675.00	1700.00	1650.00	4450.00	2800.00	3700.00	1000.00
October, 08	1625.00	1687.50	1725.00	1625.00	4500.00	2800.00	3600.00	1000.00
November, 08	1850.00	2000.00	1800.00	1800.00	4500.00	2850.00	3700.00	1000.00
December, 08	1700.00	2200.00	2000.00	1600.00	4500.00	2850.00	3800.00	1000.00

TABLE VI (Concluded) - Margao Market

(In Rupees)

Year / Month	Groundnut oil, pure, clean Tin of 15 kgs	Vanaspati Tin of 15 kgs	Chillies, dry, Byadgi, long, Superior quality Quintal	Potato (Belgaum) Medium quality Quintal	Onion (N.I.) Medium quality Quintal	Coconut (Indigenous) Medium size Per 1000	Sugar (N.I.) medium Open market Quintal	Gur (Belgaum) Medium quality Quintal
1	10	11	12	13	14	15	16	17
2003	804.17	716.35	6081.25	683.96	639.27	5457.29	1289.17	1350.00
2004	1100.00	774.50	6875.00	781.25	678.54	5833.33	1478.08	1881.25
2005	941.15	726.25	6222.92	739.58	661.46	5062.50	1792.50	2056.25
2006	959.90	744.58	6793.75	1005.21	571.83	5016.67	1837.50	1989.58
2007	1077.08	823.75	8175.00	1124.38	1096.88	4605.21	1386.15	1577.08
2008	1337.50	993.96	8391.67	923.12	948.96	4685.42	1582.92	1988.54
January, 08	1250.00	840.00	8200.00	1227.50	800.00	4600.00	1335.00	1675.00
February, 08	1300.00	840.00	8000.00	1100.00	800.00	4600.00	1410.00	1650.00
March, 08	1300.00	1125.00	8000.00	1000.00	762.50	4600.00	1480.00	1650.00
April, 08	1300.00	1112.50	8000.00	650.00	550.00	4600.00	1490.00	1737.50
May, 08	1300.00	1050.00	8000.00	662.50	600.00	4600.00	1480.00	1800.00
June, 08	1300.00	990.00	8000.00	850.00	637.50	4600.00	1480.00	1850.00
July, 08	1300.00	985.00	8000.00	937.50	937.50	4625.00	1540.00	1975.00
August, 08	1400.00	990.00	8500.00	912.50	1200.00	4625.00	1650.00	2150.00
September, 08	1400.00	995.00	9000.00	1000.00	1175.00	4750.00	1750.00	2200.00
October, 08	1400.00	1000.00	9000.00	875.00	1125.00	4825.00	1780.00	2300.00
November, 08	1400.00	1000.00	9000.00	962.50	1300.00	4900.00	1800.00	2425.00
December, 08	1400.00	1000.00	9000.00	900.00	1500.00	4900.00	1800.00	2450.00

TABLE VII**Average Wholesale Prices of some important commodities in Mapusa Market****(In Rupees)**

Year / Month	Rice Raw fine Quintal	Rice Raw coarse Quintal	Rice Boiled coarse Quintal	Wheat- -Khandwa Superior quality Quintal	Turdal (Barsi / Indori) Superior quality Quintal	Gram Watana Superior quality White Quintal	Moong Medium Quintal	Coconut oil Pure clean Tin of 15 Kgs.
1	2	3	4	5	6	7	8	9
2003	1368.75	1016.67	1068.33	1081.25	2447.92	1562.50	2329.17	921.87
2004	1687.50	1069.17	989.79	1113.75	2664.58	1612.50	2291.67	1225.00
2005	1429.17	1133.33	1325.00	1203.75	2458.33	1470.83	2550.00	1264.58
2006	1351.04	1454.17	1403.12	1391.67	2925.00	1615.62	3712.50	1033.33
2007	1408.33	1452.08	1450.00	1552.08	3546.46	1945.83	3625.00	979.17
2008	1521.88	1655.21	1607.29	1595.83	4163.33	2539.58	3476.56	1009.38
January, 08	1350.00	1400.00	1312.50	1425.00	3112.50	2175.00	3350.00	1087.50
February, 08	1400.00	1475.00	1450.00	1450.00	3922.50	2250.00	3150.00	1000.00
March, 08	1375.00	1450.00	1450.00	1500.00	3900.00	2200.00	3300.00	1000.00
April, 08	1400.00	1450.00	1450.00	1500.00	3900.00	2200.00	3300.00	1000.00
May, 08	1400.00	1450.00	1450.00	1500.00	3900.00	2200.00	3300.00	1000.00
June, 08	1550.00	1637.50	1700.00	1600.00	4400.00	2650.00	3400.00	1000.00
July, 08	1550.00	1650.00	1700.00	1600.00	4400.00	2650.00	3400.00	1000.00
August, 08	1612.50	1700.00	1725.00	1600.00	4425.00	2825.00	3843.75	1012.50
September, 08	1612.50	1725.00	1700.00	1662.50	4500.00	2812.50	3637.50	1012.50
October, 08	1600.00	1700.00	1750.00	1612.50	4500.00	2800.00	3612.50	1000.00
November, 08	1700.00	2000.00	1800.00	1700.00	4500.00	2850.00	3625.00	1000.00
December, 08	1712.50	2225.00	1800.00	2000.00	4500.00	2862.50	3800.00	1000.00

TABLE VII (Concluded) - Mapusa Market**(In Rupees)**

Year / Month	Groundnut oil, pure, clean Tin of 15 kgs	Vanaspati Tin of 15 kgs	Chillies, dry, Byadgi, long, Superior quality Quintal	Potato (Belgaum) Medium quality Quintal	Onion (N.I.) Medium quality Quintal	Coconut (Indigenous) Medium size Per 1000	Sugar (N.I.) medium Open market Quintal	Gur (Belgaum) Medium quality Quintal
1	10	11	12	13	14	15	16	17
2003	753.08	727.50	7250.00	830.83	507.50	6154.17	1190.00	1252.08
2004	950.08	784.50	6666.67	792.08	723.96	9116.04	1520.83	1845.83
2005	895.83	791.67	6041.67	745.63	680.00	5162.50	1794.79	2021.88
2006	962.71	747.50	6691.67	1003.12	590.62	4983.33	1827.92	1977.08
2007	1070.83	823.75	8145.83	1115.83	1095.83	4604.17	1383.33	1566.67
2008	1228.13	932.92	8401.04	923.75	948.44	4730.21	1558.33	1987.50
January, 08	987.50	770.00	7000.00	1150.00	825.00	4800.00	1580.00	1875.00
February, 08	1125.00	850.00	8200.00	1260.00	850.00	4600.00	1320.00	1675.00
March, 08	1000.00	860.00	8200.00	1050.00	750.00	4600.00	1320.00	1700.00
April, 08	1000.00	860.00	8200.00	712.50	700.00	4600.00	1320.00	1700.00
May, 08	1000.00	860.00	8200.00	712.50	700.00	4600.00	1320.00	1700.00
June, 08	1300.00	1000.00	8000.00	800.00	600.00	4600.00	1480.00	1800.00
July, 08	1300.00	1000.00	8000.00	800.00	600.00	4600.00	1480.00	1800.00
August, 08	1425.00	995.00	9000.00	950.00	1206.25	4762.50	1700.00	2225.00
September, 08	1400.00	1000.00	9012.50	925.00	1212.50	4875.00	1800.00	2200.00
October, 08	1400.00	1000.00	9000.00	887.50	1150.00	4850.00	1780.00	2300.00
November, 08	1400.00	1000.00	9000.00	925.00	1287.50	4925.00	1800.00	2425.00
December, 08	1400.00	1000.00	9000.00	912.50	1500.00	4950.00	1800.00	2450.00

TABLE VIII**Average Retail Prices of some essential commodities of Middle Class Consumption in Goa State****(In Rupees)**

Year / Month	Rice Raw Medium husked Fair Price Kg	Rice, boiled Medium Open market Kg.	Rice, raw, Mill husked, Open market Kg.	Wheat, brown Medium quality, Fair Price Kg.	Wheat, khandwa brown Open market Kg.	Turdal (Barsi) Superior quality Kg.	Gram Watana Medium quality Kg.	Moong Medium quality Kg.	Coconut Oil mill made Kg.
1	2	3	4	5	6	7	8	9	10
2003	8.95	12.42	11.78	6.60	12.66	30.22	17.24	27.93	86.10
2004	8.95	13.00	11.74	6.60	12.91	33.41	17.74	24.46	103.32
2005	8.71	13.32	12.06	6.60	12.91	32.63	17.76	29.88	100.39
2006	8.95	14.56	11.90	6.60	15.50	32.92	18.13	41.01	90.26
2007	8.95	15.97	12.19	6.60	16.41	39.75	21.70	39.40	88.50
2008	8.95	19.81	15.91	6.64	17.16	45.95	28.74	38.78	91.83
January, 08	8.95	17.47	15.15	6.64	16.78	43.84	25.65	33.50	92.55
February, 08	8.95	17.10	15.04	6.64	16.45	41.47	25.61	33.92	91.29
March, 08	8.95	18.40	14.92	6.64	16.91	42.67	26.86	35.29	91.67
April, 08	8.95	18.99	14.97	6.64	16.94	43.60	28.92	35.68	91.40
May, 08	8.95	19.41	14.62	6.64	17.01	42.65	29.58	35.64	90.88
June, 08	8.95	19.78	15.40	6.64	17.15	43.13	29.48	35.71	90.04
July, 08	8.95	21.17	16.01	6.64	17.36	43.93	29.54	36.50	88.88
August, 08	8.95	21.04	16.84	6.64	17.53	49.67	30.85	44.94	92.17
September, 08	8.95	20.88	16.85	6.64	17.26	49.32	30.60	44.71	92.50
October, 08	8.95	21.01	16.86	6.64	17.40	50.06	29.90	43.89	92.06
November, 08	8.95	20.95	16.93	6.64	17.48	50.97	29.15	42.59	94.50
December, 08	8.95	21.55	17.33	6.64	17.61	50.12	28.77	42.98	94.00

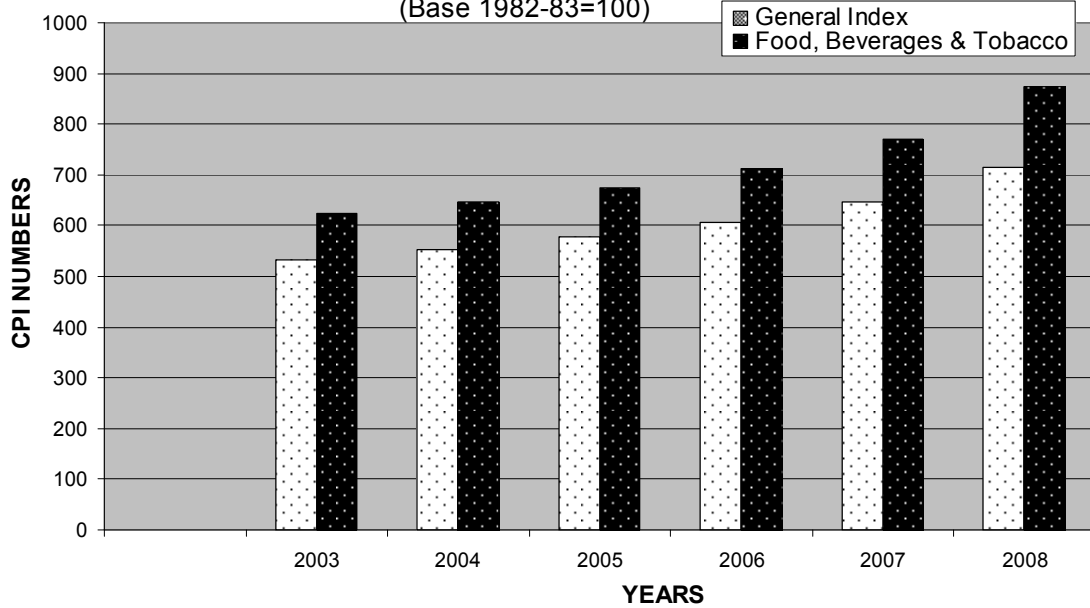
TABLE VIII (Concluded)**(In Rupees)**

Year / Month	Groundnut Oil pure, mill made Kg.	Vanaspati Kg.	Chillies, Dry Byadgi (N.I.) Kg.	Potato (N.I.) Medium quality Kg.	Onion (N.I.) Medium quality Kg.	Coconut local Medium size Kg.	Sugar		Gur Medium quality Kg.	Arecanut Kg.
							Medium quality Fair Price Kg.	Medium quality Open market Kg.		
1	11	12	13	14	15	16	17	18	19	20
2003	72.76	53.28	71.27	9.15	8.04	7.92	13.46	13.81	16.27	88.33
2004	72.61	55.99	84.13	9.91	8.84	9.22	-	16.33	21.42	95.38
2005	73.51	56.13	65.63	11.35	11.29	9.60	15.21	19.04	23.37	97.26
2006	73.16	56.01	73.30	13.21	8.13	8.81	15.50	19.68	22.90	117.65
2007	85.96	62.81	76.96	14.07	14.91	8.61	15.50	15.22	19.25	120.41
2008	98.69	74.99	88.54	11.41	11.08	8.67	15.50	17.09	21.67	120.77
January, 08	95.37	69.89	81.41	13.36	10.36	8.16	0.00	14.71	18.54	122.78
February, 08	93.53	72.53	78.50	12.02	8.68	8.31	0.00	15.05	17.96	121.45
March, 08	94.44	73.75	79.44	11.19	8.11	8.40	0.00	15.27	17.34	122.95
April, 08	97.59	76.68	80.50	11.10	7.98	8.66	0.00	15.86	17.85	122.05
May, 08	98.38	75.51	88.42	10.64	7.92	8.67	0.00	15.89	18.73	120.00
June, 08	99.21	75.29	85.33	10.46	8.07	8.76	0.00	15.71	20.12	120.00
July, 08	99.65	76.58	84.23	10.48	9.16	8.67	0.00	15.77	21.74	120.00
August, 08	99.88	76.38	84.12	11.53	13.38	8.65	0.00	18.41	23.42	120.00
September, 08	100.00	77.15	91.67	11.93	12.86	8.88	0.00	20.03	24.56	120.00
October, 08	101.42	77.71	94.71	11.40	12.26	8.98	15.50	19.26	25.55	120.00
November, 08	101.97	76.89	102.78	11.33	15.38	9.00	15.50	19.22	27.35	120.00
December, 08	102.81	71.54	111.31	11.53	18.79	8.92	15.50	19.89	26.82	120.00

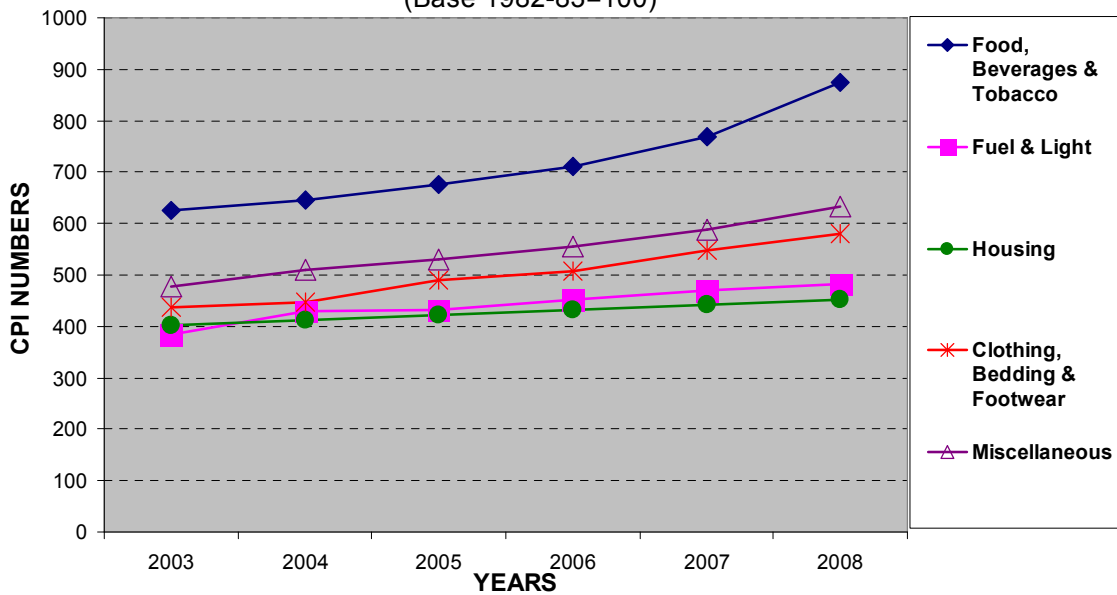
**CONSUMER PRICE INDEX
NUMBERS
IN GOA STATE**

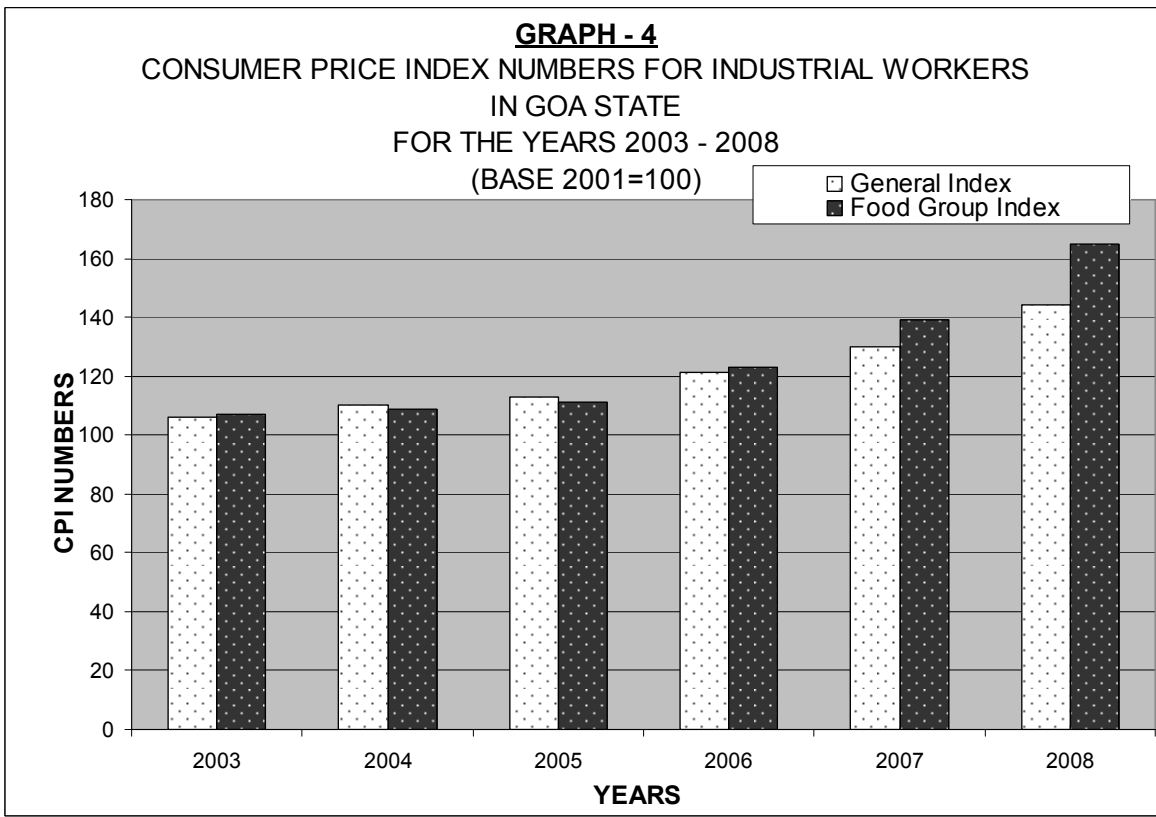
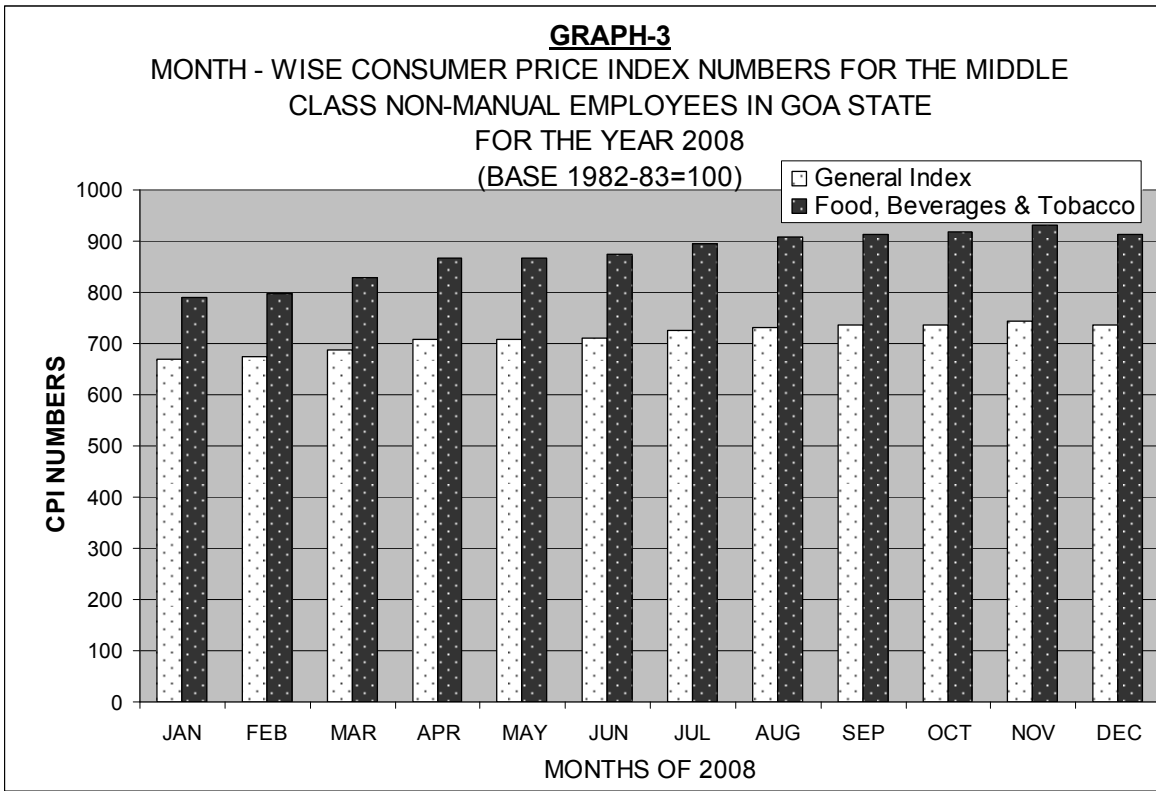
**GRAPHICAL
ANALYSIS**

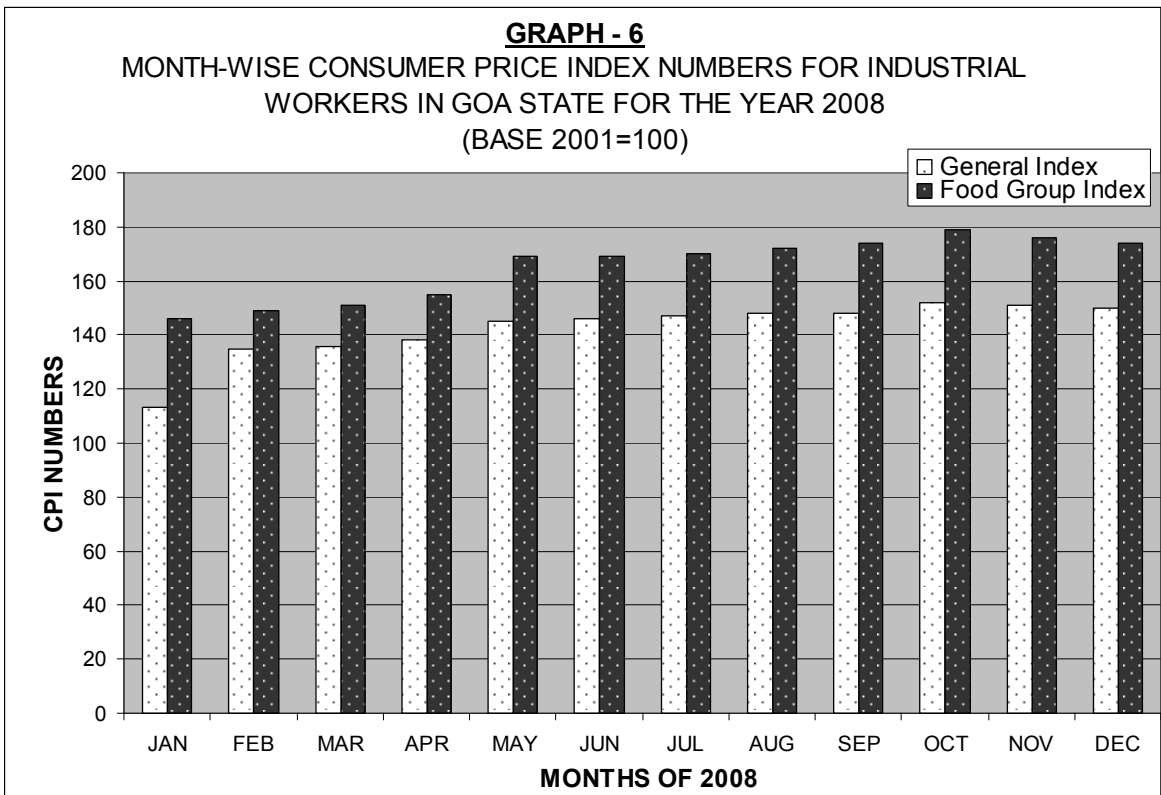
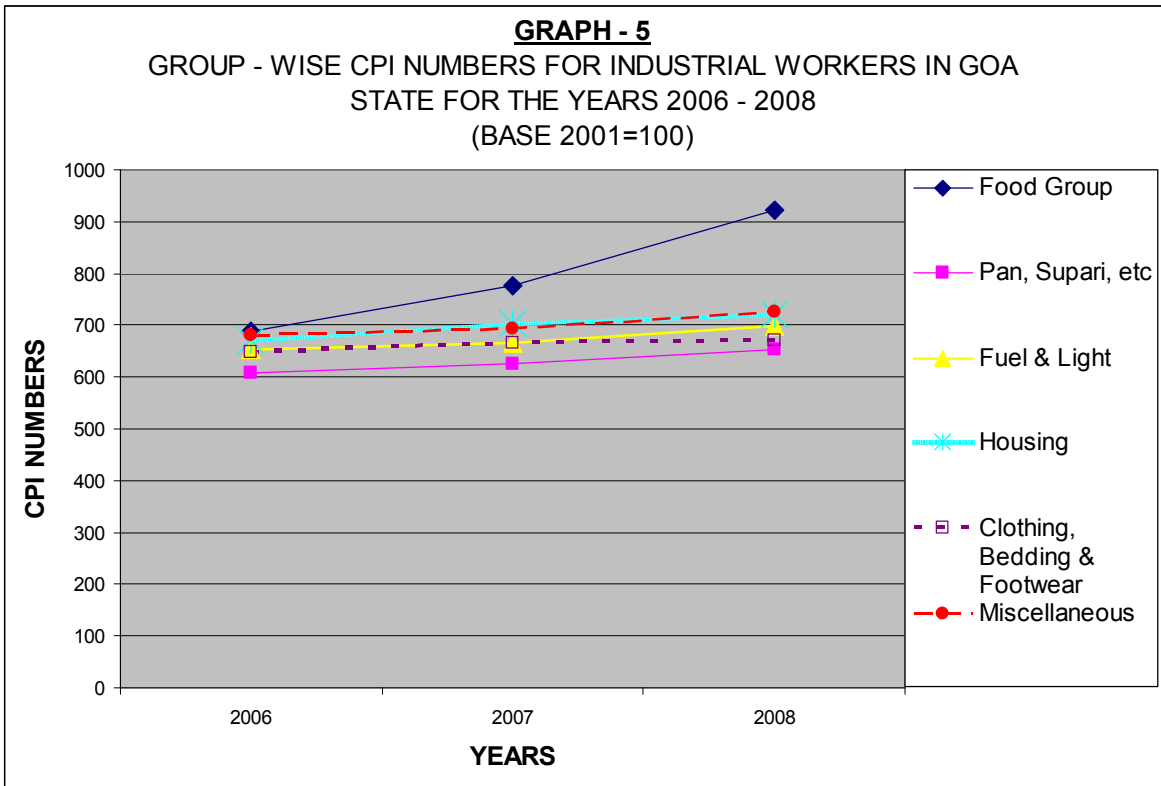
GRAPH - 1
CONSUMER PRICE INDEX FOR THE MIDDLE CLASS
NON-MANUAL EMPLOYEES IN GOA STATE
FOR THE YEARS 2003 - 2008
 (Base 1982-83=100)



GRAPH - 2
GROUP-WISE CPI NOS FOR THE MIDDLE CLASS NON-MANUAL
EMPLOYEES IN GOA STATE
(2003-2008)
 (Base 1982-83=100)

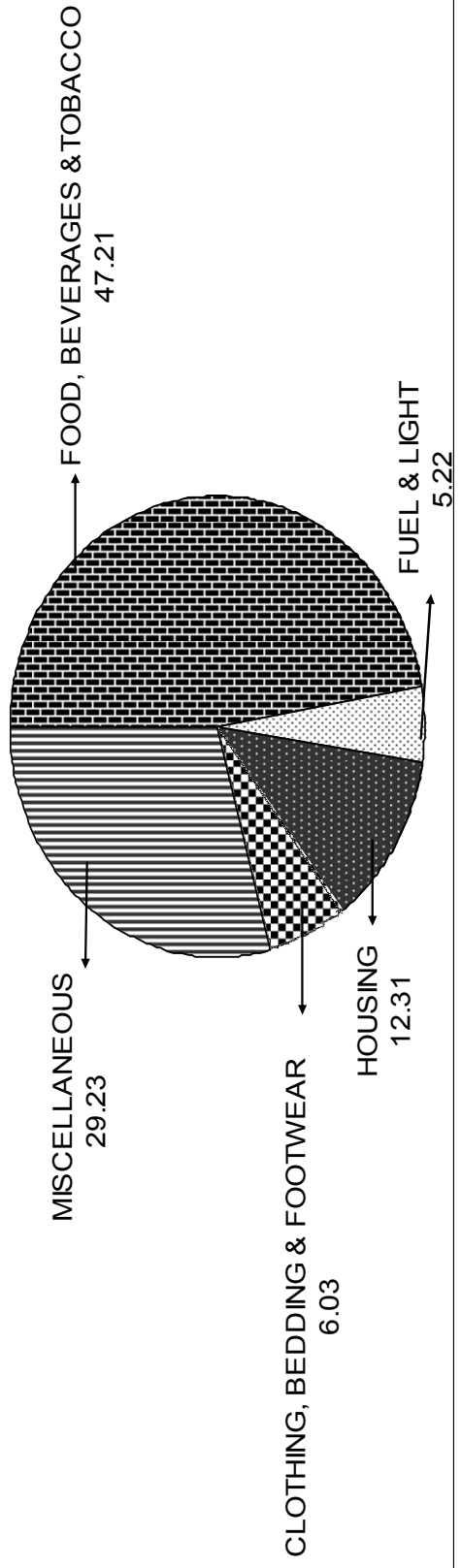




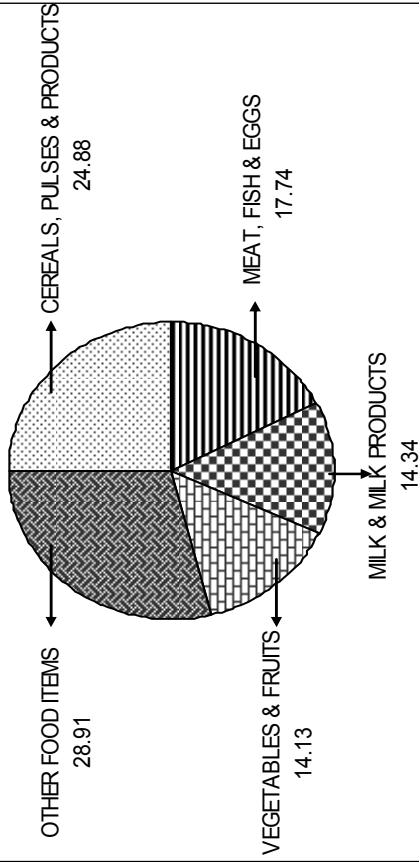


GRAPH - 7

**GROUP-WISE WEIGHTS FOR CONSUMER PRICE INDEX NUMBERS
FOR MIDDLE CLASS NON-MANUAL EMPLOYEES IN GOA STATE**



SUB-GROUPWISE WEIGHTS OF FOOD ITEMS



SUB-GROUPWISE WEIGHT OF MISCELLANEOUS ITEMS

