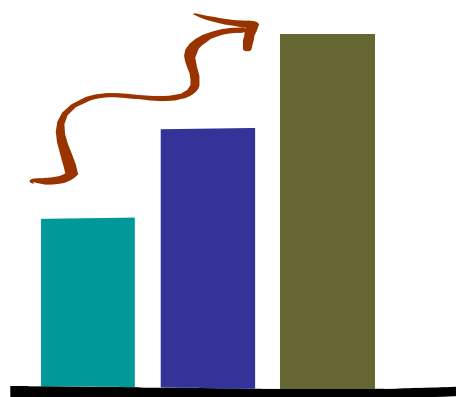




GOVERNMENT OF GOA

**PRICE TRENDS
IN
GOA STATE**

2009 - 2010



**DIRECTORATE OF PLANNING, STATISTICS & EVALUATION
PANAJI - GOA**

GOVERNMENT OF GOA

PRICE TRENDS

IN

GOA STATE

2009 - 2010

**DIRECTORATE OF PLANNING, STATISTICS & EVALUATION
PANAJI - GOA**

PREFACE

The impact of price movement not only affects the standard of living of the people but also has a significant bearing on project formulation and investment decisions. Government and Private organization or agencies too depend on price statistics for fixation of wages and various other allowances for its future planning.

The present publication on "Price Trends" being twenty eighth in series, besides giving the trends in the movement of retail and wholesale prices for some of the essential commodities in Goa State during the years 2009 & 2010 also presents yearly averages prices for the years 2004 onwards. Based on the Index Numbers compiled by this Directorate (for Middle Class Non-Manual Employees with Old and Revised Base) and those by the Labour Bureau, Shimla for Industrial Workers with Old Base (1966=100) for General Index and also with Revised Base (1982=100 & 2001=100), an analysis of the price trends has been attempted.

It is hoped that this publication will serve as a useful source for the price information needs of all concerned. While all efforts have been made to incorporate authentic price data in the publication, suggestions for further qualitative improvements in future are most welcome.

The generous co-operation extended by various individuals, shops, agencies, etc. in making available the requisite data is gratefully acknowledged. The Staff of Division VII (PRICE) deserves special mention as they have contributed immensely in terms of collection, compilation, computation and writing of report.

(Anand Sherkhane)

Director

Panaji - Goa
Date: 15-07-2011

CONTENTS

Page No.

	Price Trends — Goa State : Introduction	1- 3
	STATISTICAL TABLES - 2009	5
Table I	Scale of Ration fixed for distribution of different commodities	7
Table II	Consumer Price Index Numbers for Middle Class Non-Manual Employees	8
Table III	Consumer Price Index Numbers for Industrial Workers	9
Table IV	Average wholesale prices of some important commodities in Panaji Market	10
Table V	Average wholesale prices of some important commodities in Margao Market	11
Table VI	Average wholesale prices of some important commodities in Mapusa Market	12
Table VII	Average retail prices of some essential commodities of Middle Class consumption in Goa State	13
	STATISTICAL TABLES - 2010	15
Table I	Scale of Ration fixed for distribution of different commodities	17
Table II	Consumer Price Index Numbers for Middle Class Non-Manual Employees	18
Table III	Consumer Price Index Numbers for Industrial Workers	19
Table IV	Average wholesale prices of some important commodities in Panaji Market	20
Table V	Average wholesale prices of some important commodities in Margao Market	21
Table VI	Average wholesale prices of some important commodities in Mapusa Market	22
Table VII	Average retail prices of some essential commodities of Middle Class consumption in Goa State	23
	GRAPHICAL ANALYSIS	25
1	Yearly CPI Nos. for the Middle Class Non-Manual Employees in Goa State (2005-2010)	27
2	Group-wise CPI Nos. for the Middle Class Non- Manual Employees in Goa State (2005-2010)	
3	Month-wise CPI Nos. for the Middle Class Non- Manual Employees in Goa State (2010)	28
4	Yearly CPI Nos. for the Industrial Workers in Goa State (2006-2010)	
5	Group-wise CPI Nos. for Industrial Workers in Goa State (2006-2010)	29
6	Month-wise CPI Nos. for Industrial Workers in Goa State for the Year 2010.	

PRICE TRENDS — GOA STATE

INTRODUCTION

1. GENERAL BACKGROUND

Goa, which was a Union Territory along with Daman and Diu, was conferred Statehood on 30th May, 1987. It is administratively divided into two districts viz. North Goa District and South Goa District with their head-quarters at Panaji and Margao, respectively. These districts are further sub-divided into eleven talukas. While North Goa consists of six talukas viz. Tiswadi, Bardez, Pernem, Bicholim, Sattari, and Ponda; South Goa comprises of five talukas viz. Sanguem, Canacona, Quepem, Salcete and Mormugao. The geographical area of the State is 3702 Sq. Kms, of which 1736 Sq Kms. is covered by North Goa and the remaining 1966 Sq. Kms. by South Goa. About 1,22,446 hectares of area is under forest and the net area sown is 1,31,587 hectares situated on the west coast of Indian sub continent. The State is endowed with rainfall from the South – West monsoon, the normal rainfall recorded for the year 2010 being 2716 mm.

1.2 The total population of the state, according to the 2011 census, is 14,57,723 of which North Goa had 8,17,761 and South Goa 6,39,962. The density of population of the State is 394 persons per Sq. Kms. The density of population in North Goa is 471 persons per Sq. Kms as against 326 persons per Sq. Kms. in South Goa.

1.3 In order to have adequate control over prices and ensure equitable distribution of the essential commodities to the people at reasonable rates, the Government has introduced public distribution of essential commodities through a number of fair price shops. The scale of ration fixed for distribution is shown in Table - I separately for the years 2009 and 2010.

2. CPI NUMBERS - Its Meaning, Scope and Use

The Consumer Price Index Numbers indicate the average percentage change in the prices paid by the consumer over a period of time with reference to a base period. The average percentage change, measured by the index is estimated on monthly basis with reference to a fixed period of the index. The index during the base period is taken to be 100 so that the indices for later periods are automatically expressed as percentage with reference to the base period.

The objective of the index is to measure the effect of price change with reference to a fixed basket of goods and services that form part of consumption. This basket reflects a particular level of living of the population group from the point of view of consumption. Thus, the fixed base period of the index provides uniform reference period for consumption purpose and the fixed basket of goods and services enable measurements of the effect of price changes. For example, Consumer Price Index numbers for Middle Class Non- Manual Employees of Goa State for December, 2010 was 863 (Base 1982-83=100) indicating that the cost of a fixed basket of goods and services consumed by the middle class non-manual employees in Goa has increased by 763 percent compared to the base year (1982-83) prices.

2.2 The Index does not measure absolute level of prices, but only indicates the average percentage change in the prices of a fixed basket of goods and services at different points of time.

2.3 This Index does not also measure changes in the total expenditure of the population group or in other words, their actual cost of living. It measures the effect of price change only.

2.4 The cost of living population group is influenced by a large number of factors like income, changes in the standard of living, quality of commodities and services consumed prices etc. It will be readily conceded that one of the most important factors determining change in the cost of living of the population group is the extent to which the prices of goods and services consumed by them change from time to time. The prices and income are co-related. It is so because, if prices go up and income of the population group remains constant, the population group has to spend more for the same quantum of goods and services and these results in a fall in the standard of living. Conversely, if income increases more than prices, then there is an improvement in the living conditions. Thus, a cost of Living Index, in the true sense of the term, has to take into account different factors. Consumer Price Index Numbers, therefore, helps us to measure the cost of living.

2.5 A study of the Consumer Price Index will also enable us to estimate the required change in income which is necessary to maintain a given level of standard of living of the population group covered by the Index.

3. CPI NOS. FOR THE MIDDLE CLASS NON-MANUAL EMPLOYEES IN GOA STATE

The consumer price Index Numbers for the Middle Class Non-Manual Employees in Goa are being compiled by the Directorate of Planning, Statistics and Evaluation since 1966, based on the Family Living Survey conducted in 1965 for Panaji Town. As is well known, the consumption pattern of a given population undergoes radical changes with the passage of time and the series become out-dated. As such, the Central Statistical Organization, New Delhi carried out a fresh Middle Class Family Living Survey during the year 1982 on a uniform basis throughout the country.

3.2 A similar survey, on the pattern of the one conducted by the Central Statistical Organization and approved by the Technical Advisory Committee (TAC) on prices and cost of living was carried out by this Directorate during the year 1982 – 83, with a view to derive the new Weighting Diagram, based on the latest consumption pattern of the middle class families in Goa. In this survey, four different centers namely Panaji, Margao, Vasco and Mapusa towns were covered. The methodology and sampling design for this series were decided upon in consultation with the Central Statistical organization for the purpose of uniformity.

3.3 The Consumer Price Index Numbers for the Middle Class Non-Manual Employees are being compiled by this Directorate based on the fresh surveys conducted weekly and monthly basis. The quarterly Index Numbers are regularly published in the form of a small bulletin. The General and Group wise Index Numbers are given in Table II, separately for the years 2009 and 2010. The average yearly indices on Revised Base 1982-83=100 since 2004 are also given in the same table.

4. CPI NOS. FOR INDUSTRIAL WORKERS IN GOA.

The series of Consumer Price Index Numbers for Industrial Workers in Goa was being compiled regularly on old Base (1966=100) by the Labour Bureau, Shimla since 1967. *Since it was felt that with the passage of time the consumption pattern of the working class had gone a change*, the old series was replaced by the New Series with base 2001=100 on the basis of a working Class Family Income and Expenditure Survey conducted in the year 1981-82, all over the country. The price collection work for the new series in respect of Goa is being done by the officials of the Directorate of Planning, Statistics and Evaluation, Government of Goa.

4.2 The industrial centers selected for the survey are Margao, Vasco, Ponda, Curchorem, Bicholim and Mapusa. This Index is widely used for regulating the payment of Dearness Allowances to the employees to compensate for the rise in prices. The Dearness Allowance of the employees are either increased or reduced as per the rise and fall of the particular Index with which the Dearness Allowances is linked.

4.3 The average yearly indices on revised base 2001=100 of the Industrial Workers in Goa have been given in table III separately for the years 2009 and 2010.

5. WHOLESALE AND RETAIL PRICES

5.1 Markets in Goa State: As stated earlier, the State of Goa is administratively divided into 11 talukas. The head quarter of each taluka is considered as local market. However, three towns, viz. Panaji, Margao and Mapusa are the important centres for wholesale and retail trade in the State.

5.2 Wholesale and Retail Prices: The annual average wholesale prices of important commodities for the years 2009 and 2010 and their monthly spread for Panaji, Margao and Mapusa towns are presented in Tables IV, V and VI respectively. Similarly, average retail prices of selected items of common consumption of Middle class Non-Manual Employees for Goa State are given in table VII. Interested readers may refer to these to have a glimpse of the picture of year-wise and month-wise fluctuations in prices.

**STATISTICAL
TABLES**

**YEAR
2009**

TABLE NO. 1.**Scale of Ration Fixed for Distribution of Different Commodities during 2009**

Sl. No.	Commodity	Month	Quota Per Card			
			APL	BPL	AAY	ANP
1	2	3	4	5	6	7
1.	Rice	January, April, May, September & October February, March & November July August December	10 Kgs 10 Kgs 10 Kgs 20 Kgs 20 Kgs	32 Kgs 34 Kgs 35 Kgs 32 Kgs --	35 Kgs 35 Kgs 35 Kgs 35 Kgs --	10 Kgs 10 Kgs 10 Kgs 10 Kgs --
2.	Wheat	January, May, July, August, September, October & November February & March April	2 Kgs 1 Kg 3 Kgs		-- -- --	
3.	Sugar	January, February, March, April, May, July, September & November August & December	-- --	500 gms per person per month 1 Kg per person per month		
4.	Palmolein oil	--	--			

Abbreviation: APL - Above Poverty Line
BPL – Below Poverty Line
AAY - Antodaya Anna Yojna
ANP - Annapurna

Source: Directorate of Civil Supplies & Price Control, Panaji.

TABLE II**Consumer Price Index Numbers for Middle Class Non Manual Employees in Goa****Base: 1982-83=100 w.e.f. July, '90.**

Year / Month	General Index		Percentage variation over the previous year on revised base	Food, Beverages & Tobacco Index	Fuel & Light Index	Housing Index	Clothing, Bedding & Footwear Index	Miscellaneous Index
	Old Base (1966=100)	Revised Base (1982-83=100)						
1	2	2(a)	3	4	5	6	7	8
2004	1534	554	3.94	646	430	411	448	509
2005	1601	578	4.33	675	431	424	490	530
2006	1678	606	4.84	712	453	434	508	555
2007	1794	648	6.93	769	470	444	548	589
2008	1978	714	10.18	875	483	454	580	632
2009	2174	785	9.94	984	492	464	601	690
January, 09	2080	751		925	491	461	594	672
February, 09	2078	750		921	491	461	594	672
March, 09	2083	752		929	491	461	594	669
April, 09	2116	764		945	491	461	597	683
May, 09	2147	775		966	492	461	597	688
June, 09	2152	777		969	492	461	597	689
July, 09	2227	804		1016	492	466	602	702
August, 09	2210	798		1002	492	466	602	702
September, 09	2208	797		1001	492	466	603	702
October, 09	2246	811		1032	492	466	605	698
November, 09	2266	818		1047	492	466	606	698
December, 09	2280	823		1053	492	466	621	704

Converted on Old Base with conversion factor 2.77**Source: Directorate of Planning, Statistics & Evaluation, Panaji - Goa.**

TABLE III
Consumer Price Index for the Industrial Workers in Goa

Base: 2001=100 w.e.f. January, '06

Year / Month	General Index			Percentage variation over the previous year on revised base	Food Group Index	Pan, Supari, tobacco & Intoxicants Index	Fuel & Light Index	Housing Index	Clothing Bedding & Footwear Index	Miscellaneous Index
	Old Base (1966=100)	Revised Base (1982=100)	Revised Base (2001=100)							
1	2*	2(a)**	2(b)	3	4	5	6	7	8	9
2004	2086	614	--	3.72	612	622	569	831	311	586
2005	2155	634	--	3.26	620	640	548	961	321	598
2006	2305	678	121	6.94	123	109	117	120	116	122
2007	2471	727	130	7.44	139	112	119	126	119	124
2008	2738	805	144	10.77	165	117	125	129	120	130
2009	3119	917	164	13.89	192	124	130	151	128	144
January, 09	2907	855	153		177	120	129	136	124	136
February, 09	2907	855	153		179	121	128	136	124	136
March, 09	2927	861	154		179	121	129	136	124	136
April, 09	2985	878	157		186	121	129	136	129	136
May, 09	3023	889	159		191	123	129	136	129	136
June, 09	3080	906	162		194	123	130	136	129	141
July, 09	3193	939	168		195	125	131	166	129	146
August, 09	3230	950	170		195	125	131	166	129	152
September, 09	3230	950	170		196	125	131	166	129	152
October, 09	3250	956	171		197	126	132	166	129	152
November, 09	3308	973	174		205	128	130	166	129	149
December, 09	3383	995	178		212	129	131	166	130	154

* Converted on Old Base with conversion factor 3.40

** Converted on Old Base with conversion factor 5.59

Base: 1982 = 100 w.e.f. October, '88 to December '05

Source: Labour Bureau, Shimla.

TABLE IV**Average Wholesale Prices of some important commodities in Panaji Market****(In Rupees)**

Year / Month	Rice Raw Fine Quintal	Rice Raw Coarse Quintal	Wheat-Khandwa Superior Quality Quintal	Turdal (Barsi / Indori) Superior Quality Quintal	Gram Watana Superior Quality White Quintal	Moong Medium Quintal	Coconut oil Pure Clean Tin of 15 Kgs.	Groundnut oil, Pure, Clean Tin of 15 Kgs
1	2	3	4	5	6	7	8	9
2004	1429.48	1200.52	1109.06	2435.94	1506.02	2267.08	1387.28	1068.23
2005	1490.10	1257.29	1228.75	2518.84	1448.54	2661.88	1157.60	996.46
2006	1460.62	1496.46	1409.06	2911.35	1567.08	3705.21	1155.00	1060.21
2007	1426.46	1455.21	1548.54	3547.92	1877.08	3742.71	1002.08	1022.92
2008	1612.71	1634.79	1733.33	4473.96	2728.12	3658.33	1029.17	1218.75
2009	2579.17	2086.46	1776.56	6422.92	2155.21	4971.88	1125.00	1136.46
January, 09	1725.00	2425.00	1793.75	4775.00	2525.00	4100.00	1100.00	1050.00
February, 09	1725.00	2400.00	1775.00	4800.00	2475.00	4150.00	1100.00	1025.00
March, 09	1750.00	2337.50	1775.00	4875.00	2425.00	4250.00	1100.00	1075.00
April, 09	1800.00	2100.00	1775.00	4925.00	2400.00	4250.00	1100.00	1100.00
May, 09	2025.00	2262.50	1775.00	5362.50	2100.00	4300.00	1125.00	1050.00
June, 09	2825.00	1750.00	1650.00	6162.50	1975.00	4337.50	1050.00	1150.00
July, 09	2737.50	1825.00	1625.00	7500.00	2075.00	4550.00	1125.00	1150.00
August, 09	2925.00	1637.50	1625.00	7875.00	2100.00	4850.00	1125.00	1100.00
September, 09	3275.00	1900.00	1750.00	7600.00	2050.00	5200.00	1125.00	1150.00
October, 09	3412.50	2012.50	1775.00	7575.00	1900.00	5750.00	1150.00	1237.50
November, 09	3300.00	2187.50	1825.00	7800.00	1937.50	6750.00	1200.00	1275.00
December, 09	3450.00	2200.00	2175.00	7825.00	1900.00	7175.00	1200.00	1275.00

TABLE IV (Concluded) - Panaji Market**(In Rupees)**

Year / Month	Vanaspati Tin of 15 kgs	Chillies, dry, Byadgi, long, Superior Quality Quintal	Corriander "Induri" Superior Quality Quintal	Potato (Belgaum) Medium Quality Quintal	Onion (N.I.) Medium Quality Quintal	Coconut (Indigenous) Medium size Per 1000	Sugar (N.I.) Medium Open Market Quintal	Gur (Belgaum) Medium Quality Quintal
1	10	11	12	13	14	15	16	17
2004	789.50	6735.42	3671.04	658.27	619.41	6493.12	1417.21	1543.12
2005	801.67	6193.23	3725.00	848.65	620.52	5201.88	1836.98	1906.67
2006	737.23	6666.67	3981.25	977.92	598.02	4946.88	1866.88	1988.02
2007	827.50	8164.58	4639.58	1130.83	1075.21	4919.79	1406.25	1609.38
2008	1000.40	8698.96	6914.58	934.79	863.54	4950.00	1590.83	2012.50
2009	910.73	11766.67	6862.50	1495.83	1408.33	5838.54	2719.38	3013.96
January, 09	1056.25	12000.00	7162.50	925.00	1350.00	5100.00	2250.00	2650.00
February, 09	1037.50	12000.00	7212.50	962.50	1150.00	5150.00	2275.00	2650.00
March, 09	950.00	12000.00	6500.00	1050.00	850.00	5100.00	2262.50	2825.00
April, 09	900.00	12250.00	6600.00	1100.00	800.00	5237.50	2275.00	2787.50
May, 09	850.00	12000.00	6500.00	1200.00	850.00	5100.00	2275.00	2825.00
June, 09	840.00	11500.00	6750.00	1350.00	1075.00	6125.00	2360.00	2980.00
July, 09	828.75	11750.00	6750.00	1575.00	1075.00	6250.00	2360.00	3000.00
August, 09	847.50	11600.00	6375.00	1562.50	1050.00	6250.00	3025.00	3150.00
September, 09	900.00	11500.00	6750.00	1825.00	1100.00	6250.00	3150.00	3225.00
October, 09	937.50	11600.00	7250.00	2350.00	2600.00	6500.00	3400.00	3350.00
November, 09	931.25	11500.00	7250.00	2100.00	2650.00	6500.00	3400.00	3350.00
December, 09	850.00	11500.00	7250.00	1950.00	2350.00	6500.00	3600.00	3375.00

TABLE V**Average Wholesale Prices of some important commodities in Margao Market****(In Rupees)**

Year / Month	Rice Raw Fine Quintal	Rice Raw Coarse Quintal	Wheat-Khandwa Superior Quality Quintal	Turdal (Barsi / Indori) Superior Quality Quintal	Gram Watana Superior Quality White Quintal	Moong Medium Quintal	Coconut oil Pure Clean Tin of 15 Kgs.	Groundnut oil, Pure, Clean Tin of 15 Kgs
1	2	3	4	5	6	7	8	9
2004	1352.08	1370.83	1240.62	2739.58	1563.62	2209.37	1200.00	1100.00
2005	1366.67	1364.58	1261.46	2397.92	1478.12	2656.25	1179.17	941.15
2006	1355.21	1450.00	1370.83	2917.71	1612.50	3651.04	1041.67	959.90
2007	1443.75	1446.88	1567.71	3521.67	1929.17	3604.17	991.67	1077.08
2008	1592.71	1698.96	1637.50	4360.21	2675.00	3563.54	1000.00	1337.50
2009	2593.75	2020.83	1756.25	6416.67	2094.79	4925.00	1061.46	1114.58
January, 09	1750.00	2400.00	1737.50	4800.00	2425.00	4000.00	1000.00	1050.00
February, 09	1750.00	2350.00	1737.50	4800.00	2362.50	4000.00	1000.00	1025.00
March, 09	1800.00	2300.00	1700.00	5000.00	2300.00	4200.00	1000.00	1100.00
April, 09	1800.00	2000.00	1700.00	5000.00	2275.00	4200.00	1000.00	1100.00
May, 09	2225.00	2000.00	1700.00	5500.00	2000.00	4250.00	1000.00	1100.00
June, 09	2825.00	1800.00	1700.00	6000.00	2000.00	4350.00	1000.00	1100.00
July, 09	2825.00	1800.00	1700.00	7200.00	2000.00	4600.00	1100.00	1100.00
August, 09	2825.00	1700.00	1700.00	7700.00	2200.00	4700.00	1100.00	1100.00
September, 09	3312.50	1850.00	1700.00	7700.00	2000.00	5200.00	1100.00	1100.00
October, 09	3312.50	1950.00	1800.00	7500.00	1875.00	5800.00	1137.50	1200.00
November, 09	3300.00	2000.00	1900.00	7800.00	1900.00	6800.00	1150.00	1200.00
December, 09	3400.00	2100.00	2000.00	8000.00	1800.00	7000.00	1150.00	1200.00

TABLE V (Concluded) - Margao Market**(In Rupees)**

Year / Month	Vanaspati Tin of 15 kgs	Chillies, dry, Byadgi, long, Superior Quality Quintal	Corriander "Induri" Superior Quality Quintal	Potato (Belgaum) Medium Quality Quintal	Onion (N.I.) Medium Quality Quintal	Coconut (Indigenous) Medium size Per 1000	Sugar (N.I.) Medium Open Market Quintal	Gur (Belgaum) Medium Quality Quintal
1	10	11	12	13	14	15	16	17
2004	774.50	6875.00	3758.33	781.25	678.54	5833.33	1478.08	1881.25
2005	726.25	6222.92	3691.67	739.58	661.46	5062.50	1792.50	2056.25
2006	744.58	6793.75	3991.67	1005.21	571.83	5016.67	1837.50	1989.58
2007	823.75	8175.00	4633.33	1124.38	1096.88	4605.21	1386.15	1577.08
2008	993.96	8391.67	6870.83	923.12	948.96	4685.42	1582.92	1988.54
2009	883.33	11604.17	6841.67	1462.50	1352.08	5395.83	2710.42	3000.00
January, 09	1000.00	12000.00	7100.00	900.00	1300.00	4900.00	2100.00	2600.00
February, 09	950.00	12000.00	7000.00	950.00	1050.00	4900.00	2150.00	2600.00
March, 09	925.00	12000.00	6500.00	1150.00	800.00	5000.00	2300.00	2800.00
April, 09	875.00	12000.00	6500.00	1150.00	800.00	5000.00	2300.00	2800.00
May, 09	825.00	11500.00	6750.00	1175.00	850.00	5000.00	2375.00	2900.00
June, 09	825.00	11000.00	7000.00	1275.00	1050.00	5000.00	2450.00	3000.00
July, 09	825.00	11000.00	7000.00	1350.00	1075.00	5500.00	2400.00	3000.00
August, 09	850.00	11500.00	6250.00	1450.00	1100.00	5500.00	3000.00	3200.00
September, 09	875.00	11500.00	7000.00	1750.00	1200.00	5750.00	3000.00	3200.00
October, 09	900.00	11500.00	7000.00	2400.00	2400.00	6000.00	3250.00	3300.00
November, 09	925.00	11500.00	7000.00	2000.00	2400.00	6100.00	3500.00	3300.00
December, 09	825.00	11750.00	7000.00	2000.00	2200.00	6100.00	3700.00	3300.00

TABLE VI**Average Wholesale Prices of some important commodities in Mapusa Market****(In Rupees)**

Year / Month	Rice Raw Fine Quintal	Rice Raw Coarse Quintal	Wheat-Khandwa Superior Quality Quintal	Turdal (Barsi / Indori) Superior Quality Quintal	Gram Watana Superior Quality White Quintal	Moong Medium Quintal	Coconut oil Pure Clean Tin of 15 Kgs.	Groundnut oil, Pure, Clean Tin of 15 Kgs
1	2	3	4	5	6	7	8	9
2004	1687.50	1069.17	1113.75	2664.58	1612.50	2291.67	1225.00	950.08
2005	1429.17	1133.33	1203.75	2458.33	1470.83	2550.00	1264.58	895.83
2006	1351.04	1454.17	1391.67	2925.00	1615.62	3712.50	1033.33	962.71
2007	1408.33	1452.08	1552.08	3546.46	1945.83	3625.00	979.17	1070.83
2008	1521.88	1655.21	1595.83	4163.33	2539.58	3476.56	1009.38	1228.13
2009	2601.25	2070.31	1745.83	6429.17	2117.71	4921.88	1047.92	1135.42
January, 09	1725.00	2406.25	1775.00	4812.50	2450.00	4025.00	1000.00	1025.00
February, 09	1725.00	2375.00	1700.00	4825.00	2412.50	4100.00	1000.00	1000.00
March, 09	1837.50	2300.00	1712.50	4950.00	2125.00	4200.00	1012.50	1100.00
April, 09	1877.50	2250.00	1712.50	4850.00	2362.50	4250.00	1000.00	1150.00
May, 09	2150.00	2100.00	1700.00	5375.00	1862.50	4225.00	1000.00	1100.00
June, 09	2825.00	1750.00	1650.00	6162.50	1975.00	4337.50	1012.50	1150.00
July, 09	2737.50	1825.00	1625.00	7800.00	2075.00	4500.00	1050.00	1150.00
August, 09	2900.00	1637.50	1625.00	7875.00	2100.00	4750.00	1050.00	1100.00
September, 09	3275.00	1900.00	1750.00	7600.00	2050.00	5200.00	1100.00	1150.00
October, 09	3412.50	2012.50	1775.00	7575.00	1900.00	5750.00	1100.00	1237.50
November, 09	3300.00	2187.50	1825.00	7462.50	1937.50	6750.00	1100.00	1187.50
December, 09	3450.00	2100.00	2100.00	7862.50	2162.50	6975.00	1150.00	1275.00

TABLE VI (Concluded) - Mapusa Market**(In Rupees)**

Year / Month	Vanaspati Tin of 15 kgs	Chillies, dry, Byadgi, long, Superior Quality Quintal	Corriander "Induri" Superior Quality Quintal	Potato (Belgaum) Medium Quality Quintal	Onion (N.I.) Medium Quality Quintal	Coconut (Indigenous) Medium size Per 1000	Sugar (N.I.) Medium Open Market Quintal	Gur (Belgaum) Medium Quality Quintal
1	10	11	12	13	14	15	16	17
2004	784.50	6666.67	3800.00	792.08	723.96	9116.04	1520.83	1845.83
2005	791.67	6041.67	3808.33	745.63	680.00	5162.50	1794.79	2021.88
2006	747.50	6691.67	3987.50	1003.12	590.62	4983.33	1827.92	1977.08
2007	823.75	8145.83	4591.67	1115.83	1095.83	4604.17	1383.33	1566.67
2008	932.92	8401.04	6851.14	923.75	948.44	4730.21	1558.33	1987.50
2009	882.92	11668.75	6821.88	1494.79	1373.96	5677.08	2726.25	3002.50
January, 09	1000.00	12125.00	7212.50	937.50	1312.50	5100.00	2100.00	2612.50
February, 09	987.50	12000.00	7175.00	950.00	1075.00	5000.00	2150.00	2600.00
March, 09	900.00	12125.00	6500.00	1175.00	825.00	5000.00	2300.00	2800.00
April, 09	850.00	12125.00	6600.00	1087.50	850.00	5000.00	2300.00	2775.00
May, 09	800.00	11750.00	6500.00	1175.00	825.00	5375.00	2395.00	2800.00
June, 09	800.00	11250.00	6750.00	1300.00	1075.00	5500.00	2360.00	2980.00
July, 09	828.75	11750.00	6750.00	1575.00	1075.00	6250.00	2360.00	3000.00
August, 09	847.50	11400.00	6375.00	1562.50	1050.00	6000.00	3025.00	3150.00
September, 09	900.00	11400.00	6750.00	1825.00	1100.00	6000.00	3150.00	3225.00
October, 09	937.50	11400.00	7250.00	2350.00	2500.00	6250.00	3400.00	3350.00
November, 09	943.75	11400.00	7000.00	2100.00	2550.00	6250.00	3400.00	3350.00
December, 09	800.00	11300.00	7000.00	1900.00	2250.00	6400.00	3775.00	3387.50

TABLE VII

Average Retail Prices of some essential commodities of Middle Class Consumption in Goa State

(In Rupees)

Year / Month	Rice Raw Medium husked Fair Price Kg	Rice, Boiled Medium Open Market Kg.	Rice, Raw, Mill husked, Open Market Kg.	Wheat, Brown Medium Quality, Fair Price Kg.	Wheat, Khandwa Brown Open Market Kg.	Turdal (Barsi) Superior Quality Kg.	Gram Watana Medium Quality Kg.	Moong Medium Quality Kg.	Coconut Oil Mill made Kg.
1	2	3	4	5	6	7	8	9	10
2004	8.95	13.00	11.74	6.60	12.91	33.41	17.74	24.46	103.32
2005	8.71	13.32	12.06	6.60	12.91	32.63	17.76	29.88	100.39
2006	8.95	14.56	11.90	6.60	15.50	32.92	18.13	41.01	90.26
2007	8.95	15.97	12.19	6.60	16.41	39.75	21.70	39.40	88.50
2008	8.95	19.81	15.91	6.64	17.16	45.95	28.74	38.78	91.83
2009	8.95	24.88	18.20	6.60	18.61	70.07	25.26	53.13	94.69
January, 09	8.95	21.86	18.50	6.60	17.75	50.29	27.01	43.20	93.72
February, 09	8.95	21.93	18.66	6.60	17.73	51.97	26.84	43.50	94.58
March, 09	8.95	22.30	18.65	6.60	17.68	53.43	26.92	44.30	94.64
April, 09	8.95	23.97	18.46	6.60	17.86	54.92	26.58	45.63	91.28
May, 09	8.95	24.42	18.74	6.60	17.85	55.86	25.53	46.98	93.30
June, 09	--	24.69	18.82	--	17.73	57.89	25.52	49.53	93.65
July, 09	8.95	25.35	18.36	6.60	17.88	75.74	24.21	52.03	92.50
August, 09	8.95	26.24	17.65	6.60	19.06	88.20	24.11	55.05	93.13
September, 09	8.95	26.88	17.66	6.60	19.43	85.53	24.34	55.78	96.02
October, 09	8.95	27.19	17.81	6.60	19.45	85.26	24.40	57.30	96.39
November, 09	8.95	26.73	17.70	6.60	19.80	88.80	24.08	67.48	96.22
December, 09	8.95	26.78	17.49	--	21.09	90.22	23.65	77.08	98.35

TABLE VII (Concluded)

(In Rupees)

Year / Month	Groundnut Oil Pure, Mill made Kg.	Vanaspati Kg.	Chillies, Dry Byadgi (N.I.) Kg.	Potato (N.I.) Medium Quality Kg.	Onion (N.I.) Medium Quality Kg.	Coconut local Medium Size Kg.	Sugar		Gur Medium Quality Kg.	Arecanut Kg.
							Medium Quality Fair Price Kg.	Medium Quality Open market Kg.		
1	11	12	13	14	15	16	17	18	19	20
2004	72.61	55.99	84.13	9.91	8.84	9.22	-	16.33	21.42	95.38
2005	73.51	56.13	65.63	11.35	11.29	9.60	15.21	19.04	23.37	97.26
2006	73.16	56.01	73.30	13.21	8.13	8.81	15.50	19.68	22.90	117.65
2007	85.96	62.81	76.96	14.07	14.91	8.61	15.50	15.22	19.25	120.41
2008	98.69	74.99	88.54	11.41	11.08	8.67	15.50	17.09	21.67	120.77
2009	97.01	63.60	120.28	16.61	16.62	8.79	N/A	26.40	34.01	122.80
January, 09	103.52	70.39	126.90	11.99	21.60	8.90	N/A	20.70	28.66	120.00
February, 09	103.56	63.10	138.33	11.25	17.20	8.96	N/A	22.08	28.15	120.00
March, 09	103.64	61.56	124.29	11.56	14.57	8.92	N/A	22.99	28.12	120.00
April, 09	101.59	61.49	123.80	11.99	12.01	8.96	N/A	24.20	29.82	121.82
May, 09	96.00	65.44	119.80	14.30	10.86	8.99	N/A	25.13	32.45	123.81
June, 09	95.09	64.44	119.40	15.20	11.98	9.00	N/A	25.33	33.92	124.50
July, 09	95.36	64.01	116.30	17.30	13.58	8.71	N/A	25.40	34.68	123.64
August, 09	94.75	62.41	112.33	17.98	13.13	8.63	N/A	29.42	35.42	124.00
September, 09	91.94	62.96	111.94	18.73	12.89	8.61	N/A	33.39	36.42	124.09
October, 09	91.94	64.24	112.78	22.17	20.85	8.61	N/A	32.17	39.49	123.91
November, 09	93.67	61.63	109.67	22.82	23.38	8.65	N/A	34.76	41.86	123.68
December, 09	93.65	61.76	116.47	23.81	28.34	8.59	N/A	36.17	39.25	123.81

**STATISTICAL
TABLES**

**YEAR
2010**

TABLE NO. 1.**Scale of Ration Fixed for Distribution of Different Commodities during 2010**

Sl. No.	Commodity	Month	Quota Per Card			
			APL	BPL	AAY	ANP
1	2	3	4	5	6	7
1.	Rice	January & February	10 Kgs	33 Kgs	35 Kgs	10 Kgs
		March	5 Kgs	33 Kgs	35 Kgs	10 Kgs
		April	15 Kgs	33 Kgs	35 Kgs	10 Kgs
		June, August & October	10 Kgs	35 Kgs	35 Kgs	10 Kgs
		September	15 Kgs	35 Kgs	35 Kgs	10 Kgs
		November	10 Kgs	60 Kgs	35 Kgs	--
		December	15 Kgs	60 Kgs	35 Kgs	--
2.	Wheat	January , February, March, April, June & August	2 Kgs		--	
		September	10 Kgs		--	
		October & November	5 Kgs		--	
		December	7 Kgs		--	
3.	Sugar	January , February, March, April , June, August, September, October, November & December	--	500gms per person per month		
4.	Palmolein oil	--	--			

**Abbreviation: APL - Above Poverty Line
BPL - Below Poverty Line
AAY - Antodaya Anna Yojna
ANP - Annapurna**

Source: Directorate of Civil Supplies & Price Control, Panaji.

TABLE II**Consumer Price Index Numbers for Middle Class Non Manual Employees in Goa**

Base: 1982 - 83 = 100 w.e.f. July, '90.

Year / Month	General Index		Percentage variation over the previous year on revised base	Food, Beverages & Tobacco Index	Fuel & Light Index	Housing Index	Clothing, Bedding & Footwear Index	Miscellaneous Index
	Old Base (1966=100)	Revised Base (1982-83=100)						
1	2	2(a)	3	4	5	6	7	8
2005	1601	578	4.33	675	431	424	490	530
2006	1678	606	4.84	712	453	434	508	555
2007	1794	648	6.93	769	470	444	548	589
2008	1978	714	10.18	875	483	454	580	632
2009	2174	785	9.94	984	492	464	601	690
2010	2312	835	6.37	1043	533	474	666	739
January, 10	2274	821		1028	492	471	632	732
February, 10	2248	812		1005	491	471	644	735
March, 10	2245	811		1002	492	471	645	735
April, 10	2249	812		1005	501	471	650	733
May, 10	2312	835		1050	501	471	656	736
June, 10	2337	844		1068	502	471	661	738
July, 10	2362	853		1079	555	476	668	737
August, 10	2323	839		1047	571	476	669	739
September, 10	2306	833		1033	573	476	670	738
October, 10	2336	843		1048	574	476	687	747
November, 10	2355	850		1062	574	476	698	748
December, 10	2391	863		1084	574	476	717	753

Converted on Old Base with conversion factor 2.77

Source: Directorate of Planning, Statistics & Evaluation, Panaji - Goa.

TABLE III
Consumer Price Index for the Industrial Workers in Goa

Base: 2001 = 100 w.e.f. January, '06

Year / Month	General Index			Percentage variation over the previous year on revised base	Food Group Index	Pan, Supari, tobacco & Intoxicants Index	Fuel & Light Index	Housing Index	Clothing Bedding & Footwear Index	Miscellaneous Index
	Old Base (1966=100)	Revised Base (1982=100)	Revised Base (2001=100)							
1	2*	2(a)**	2(b)	3	4	5	6	7	8	9
2005	2155	634	--	3.26	620	640	548	961	321	598
2006	2305	678	121	6.94	123	109	117	120	116	122
2007	2471	727	130	7.44	139	112	119	126	119	124
2008	2738	805	144	10.77	165	117	125	129	120	130
2009	3119	917	164	13.89	192	124	130	151	128	144
2010	3575	1051	188	14.63	216	133	141	197	145	162
January, 10	3478	1023	183		212	129	131	193	133	154
February, 10	3499	1029	184		213	128	133	193	133	157
March, 10	3458	1017	182		208	130	137	193	133	158
April, 10	3458	1017	182		209	129	138	193	133	158
May, 10	3516	1034	185		215	131	136	193	133	158
June, 10	3536	1040	186		218	132	135	193	133	158
July, 10	3594	1057	189		217	132	141	200	133	164
August, 10	3573	1051	188		215	134	146	200	133	165
September, 10	3631	1068	191		214	136	149	200	169	167
October, 10	3669	1079	193		218	137	149	200	169	167
November, 10	3706	1090	195		220	139	148	200	169	168
December, 10	3781	1112	199		229	139	148	200	169	169

* Converted on Old Base with conversion factor 3.40

**Converted on Old Base with conversion factor 5.59

Base: 1982 = 100 w.e.f. October, '88 to December '05

Source: Labour Bureau, Shimla.

TABLE IV
Average Wholesale Prices of some important commodities in Panaji Market

(In Rupees)

Year / Month	Rice Raw Fine Quintal	Rice Raw Coarse Quintal	Wheat-Khandwa Superior Quality Quintal	Turdal (Barsi / Indori) Superior Quality Quintal	Gram Watana Superior Quality White Quintal	Moong Medium Quintal	Coconut oil Pure Clean Tin of 15 Kgs.	Groundnut oil, Pure, Clean Tin of 15 Kgs
1	2	3	4	5	6	7	8	9
2005	1490.10	1257.29	1228.75	2518.84	1448.54	2661.88	1157.60	996.46
2006	1460.62	1496.46	1409.06	2911.35	1567.08	3705.21	1155.00	1060.21
2007	1426.46	1455.21	1548.54	3547.92	1877.08	3742.71	1002.08	1022.92
2008	1612.71	1634.79	1733.33	4473.96	2728.12	3658.33	1029.17	1218.75
2009	2579.17	2086.46	1776.56	6422.92	2155.21	4971.88	1125.00	1136.46
2010	3126.46	2028.33	1915.62	5679.17	2018.75	6697.92	1250.00	1400.00
January, 10	3225.00	1925.00	2200.00	7125.00	1900.00	7175.00	1125.00	1275.00
February, 10	3237.50	1925.00	2100.00	6000.00	1900.00	7175.00	1125.00	1275.00
March, 10	3200.00	2000.00	2000.00	5850.00	2000.00	7500.00	1200.00	1275.00
April, 10	3150.00	2150.00	1850.00	5450.00	1900.00	7500.00	1200.00	1350.00
May, 10	3100.00	2100.00	1775.00	5500.00	1850.00	7550.00	1275.00	1350.00
June, 10	3150.00	2150.00	1787.50	5750.00	1850.00	7700.00	1275.00	1350.00
July, 10	3075.00	2000.00	1787.50	5750.00	2000.00	7800.00	1275.00	1400.00
August, 10	3055.00	2020.00	1862.50	5500.00	2175.00	6600.00	1275.00	1400.00
September, 10	3050.00	2000.00	1875.00	5450.00	2200.00	5500.00	1300.00	1400.00
October, 10	3050.00	2000.00	1875.00	5450.00	2200.00	5250.00	1300.00	1575.00
November, 10	3050.00	2050.00	1925.00	5250.00	2175.00	5275.00	1300.00	1575.00
December, 10	3175.00	2020.00	1950.00	5075.00	2075.00	5350.00	1350.00	1575.00

TABLE IV (Concluded) - Panaji Market

(In Rupees)

Year / Month	Vanaspati Tin of 15 kgs	Chillies, dry, Byadgi, long, Superior Quality Quintal	Corriander "Induri" Superior Quality Quintal	Potato (Belgaum) Medium Quality Quintal	Onion (N.I.) Medium Quality Quintal	Coconut (Indigenous) Medium size Per 1000	Sugar (N.I.) Medium Open Market Quintal	Gur (Belgaum) Medium Quality Quintal
1	10	11	12	13	14	15	16	17
2005	801.67	6193.23	3725.00	848.65	620.52	5201.88	1836.98	1906.67
2006	737.23	6666.67	3981.25	977.92	598.02	4946.88	1866.88	1988.02
2007	827.50	8164.58	4639.58	1130.83	1075.21	4919.79	1406.25	1609.38
2008	1000.40	8698.96	6914.58	934.79	863.54	4950.00	1590.83	2012.50
2009	910.73	11766.67	6862.50	1495.83	1408.33	5838.54	2719.38	3013.96
2010	816.67	12802.08	6195.83	1401.04	1785.42	6625.00	2888.75	3323.96
January, 10	750.00	14000.00	7200.00	2000.00	2000.00	6250.00	3600.00	3375.00
February, 10	750.00	13500.00	7100.00	2000.00	1750.00	6250.00	3400.00	3375.00
March, 10	750.00	12500.00	7000.00	1150.00	1150.00	6250.00	3250.00	3125.00
April, 10	750.00	12500.00	6100.00	1300.00	985.50	6250.00	2750.00	3112.50
May, 10	760.00	12500.00	5900.00	1200.00	950.00	6250.00	2675.00	3325.00
June, 10	750.00	12500.00	5550.00	1100.00	950.00	6250.00	2750.00	3350.00
July, 10	810.00	12500.00	5850.00	1125.00	1025.00	6750.00	2750.00	3350.00
August, 10	850.00	12500.00	5850.00	1075.00	1225.00	6750.00	2525.00	3350.00
September, 10	875.00	12000.00	5800.00	1362.50	1950.00	7000.00	2650.00	3350.00
October, 10	880.00	12000.00	6000.00	1275.00	1937.50	7000.00	2665.00	3350.00
November, 10	925.00	13125.00	6250.00	1550.00	3500.00	7250.00	2750.00	3400.00
December, 10	950.00	14000.00	5750.00	1675.00	4000.00	7250.00	2900.00	3425.00

TABLE V
Average Wholesale Prices of some important commodities in Margao Market

(In Rupees)

Year / Month	Rice Raw Fine Quintal	Rice Raw Coarse Quintal	Wheat-Khandwa Superior Quality Quintal	Turdal (Barsi / Indori) Superior Quality Quintal	Gram Watana Superior Quality White Quintal	Moong Medium Quintal	Coconut oil Pure Clean Tin of 15 Kgs. Quintal	Groundnut oil, Pure, Clean Tin of 15 Kgs Quintal
1	2	3	4	5	6	7	8	9
2005	1366.67	1364.58	1261.46	2397.92	1478.12	2656.25	1179.17	941.15
2006	1355.21	1450.00	1370.83	2917.71	1612.50	3651.04	1041.67	959.90
2007	1443.75	1446.88	1567.71	3521.67	1929.17	3604.17	991.67	1077.08
2008	1592.71	1698.96	1637.50	4360.21	2675.00	3563.54	1000.00	1337.50
2009	2593.75	2020.83	1756.25	6416.67	2094.79	4925.00	1061.46	1114.58
2010	3071.88	2020.83	1886.46	5652.08	1968.75	6616.67	1170.83	1379.58
January, 10	3125.00	2000.00	2000.00	7100.00	1900.00	7100.00	1000.00	1250.00
February, 10	3125.00	1975.00	2000.00	5950.00	1900.00	7000.00	1050.00	1250.00
March, 10	3100.00	1975.00	1850.00	5800.00	1875.00	7200.00	1125.00	1275.00
April, 10	3000.00	2000.00	1850.00	5425.00	1850.00	7350.00	1125.00	1300.00
May, 10	3050.00	2075.00	1800.00	5450.00	1850.00	7450.00	1175.00	1325.00
June, 10	3050.00	2075.00	1750.00	5825.00	1900.00	7575.00	1175.00	1325.00
July, 10	3025.00	2075.00	1800.00	5700.00	2000.00	7675.00	1200.00	1350.00
August, 10	3025.00	2075.00	1850.00	5550.00	2000.00	6650.00	1200.00	1400.00
September, 10	3062.50	2000.00	1900.00	5400.00	2000.00	5800.00	1225.00	1400.00
October, 10	3100.00	2000.00	1937.50	5375.00	2100.00	5200.00	1250.00	1560.00
November, 10	3100.00	2000.00	1950.00	5150.00	2150.00	5100.00	1250.00	1560.00
December, 10	3100.00	2000.00	1950.00	5100.00	2100.00	5300.00	1275.00	1560.00

TABLE V (Concluded) - Margao Market

(In Rupees)

Year / Month	Vanaspati Tin of 15 kgs	Chillies, dry, Byadgi, long, Superior Quality Quintal	Corriander "Induri" Superior Quality Quintal	Potato (Belgaum) Medium Quality Quintal	Onion (N.I.) Medium Quality Quintal	Coconut (Indigenous) Medium size Per 1000	Sugar (N.I.) Medium Open Market Quintal	Gur (Belgaum) Medium Quality Quintal
1	10	11	12	13	14	15	16	17
2005	726.25	6222.92	3691.67	739.58	661.46	5062.50	1792.50	2056.25
2006	744.58	6793.75	3991.67	1005.21	571.83	5016.67	1837.50	1989.58
2007	823.75	8175.00	4633.33	1124.38	1096.88	4605.21	1386.15	1577.08
2008	993.96	8391.67	6870.83	923.12	948.96	4685.42	1582.92	1988.54
2009	883.33	11604.17	6841.67	1462.50	1352.08	5395.83	2710.42	3000.00
2010	804.38	12612.50	6114.58	1333.33	1743.75	6025.00	2841.67	3289.58
January, 10	760.00	13750.00	7100.00	1800.00	1975.00	5800.00	3550.00	3300.00
February, 10	760.00	13000.00	7000.00	1600.00	1650.00	5800.00	3450.00	3300.00
March, 10	760.00	12250.00	6950.00	1100.00	1225.00	5800.00	3200.00	3100.00
April, 10	760.00	12300.00	6000.00	1100.00	950.00	5800.00	2650.00	3100.00
May, 10	740.00	12400.00	5850.00	1100.00	1000.00	5900.00	2625.00	3300.00
June, 10	720.00	12350.00	5500.00	1100.00	1000.00	5900.00	2700.00	3325.00
July, 10	790.00	12350.00	5800.00	1150.00	1050.00	5900.00	2700.00	3325.00
August, 10	825.00	12350.00	5800.00	1300.00	1150.00	5800.00	2500.00	3300.00
September, 10	850.00	11900.00	5700.00	1350.00	1850.00	6200.00	2600.00	3325.00
October, 10	862.50	11900.00	5925.00	1300.00	1925.00	6400.00	2625.00	3325.00
November, 10	900.00	13000.00	6100.00	1500.00	3300.00	6500.00	2700.00	3375.00
December, 10	925.00	13800.00	5650.00	1600.00	3850.00	6500.00	2800.00	3400.00

TABLE VI**Average Wholesale Prices of some important commodities in Mapusa Market****(In Rupees)**

Year / Month	Rice Raw Fine Quintal	Rice Raw Coarse Quintal	Wheat-Khandwa Superior Quality Quintal	Turdal (Barsi / Indori) Superior Quality Quintal	Gram Watana Superior Quality White Quintal	Moong Medium Quintal	Coconut oil Pure Clean Tin of 15 Kgs.	Groundnut oil, Pure, Clean Tin of 15 Kgs
1	2	3	4	5	6	7	8	9
2005	1429.17	1133.33	1203.75	2458.33	1470.83	2550.00	1264.58	895.83
2006	1351.04	1454.17	1391.67	2925.00	1615.62	3712.50	1033.33	962.71
2007	1408.33	1452.08	1552.08	3546.46	1945.83	3625.00	979.17	1070.83
2008	1521.88	1655.21	1595.83	4163.33	2539.58	3476.56	1009.38	1228.13
2009	2601.25	2070.31	1745.83	6429.17	2117.71	4921.88	1047.92	1135.42
2010	3027.08	1987.71	1909.38	5666.67	2000.00	6553.12	1206.25	1383.12
January, 10	3175.00	2000.00	2175.00	7037.50	1925.00	6925.00	1100.00	1225.00
February, 10	3100.00	1950.00	2000.00	5900.00	1912.50	6950.00	1100.00	1275.00
March, 10	3000.00	1950.00	1850.00	5937.50	1887.50	7300.00	1150.00	1300.00
April, 10	2900.00	1950.00	1750.00	5400.00	1900.00	7250.00	1150.00	1325.00
May, 10	2925.00	2062.50	1775.00	5450.00	1875.00	7400.00	1200.00	1325.00
June, 10	2925.00	2000.00	1775.00	5975.00	1875.00	7600.00	1200.00	1325.00
July, 10	3000.00	1962.50	1837.50	5650.00	2075.00	7712.50	1225.00	1375.00
August, 10	3000.00	1962.50	1900.00	5550.00	2050.00	6500.00	1225.00	1406.25
September, 10	3050.00	2050.00	1962.50	5425.00	2112.50	5450.00	1275.00	1406.25
October, 10	3075.00	1975.00	1825.00	5325.00	2187.50	5200.00	1275.00	1545.00
November, 10	3075.00	2000.00	1975.00	5200.00	2150.00	5200.00	1275.00	1545.00
December, 10	3100.00	1990.00	2087.50	5150.00	2050.00	5150.00	1300.00	1545.00

TABLE VI (Concluded) - Mapusa Market**(In Rupees)**

Year / Month	Vanaspati Tin of 15 kgs	Chillies, dry, Byadgi, long, Superior Quality Quintal	Corriander "Induri" Superior Quality Quintal	Potato (Belgaum) Medium Quality Quintal	Onion (N.I.) Medium Quality Quintal	Coconut (Indigenous) Medium size Per 1000	Sugar (N.I.) Medium Open Market Quintal	Gur (Belgaum) Medium Quality Quintal
1	10	11	12	13	14	15	16	17
2005	791.67	6041.67	3808.33	745.63	680.00	5162.50	1794.79	2021.88
2006	747.50	6691.67	3987.50	1003.12	590.62	4983.33	1827.92	1977.08
2007	823.75	8145.83	4591.67	1115.83	1095.83	4604.17	1383.33	1566.67
2008	932.92	8401.04	6851.14	923.75	948.44	4730.21	1558.33	1987.50
2009	882.92	11668.75	6821.88	1494.79	1373.96	5677.08	2726.25	3002.50
2010	785.42	12468.75	6058.33	1282.29	1691.88	6370.83	2833.54	3263.54
January, 10	750.00	13250.00	7000.00	1925.00	1950.00	6000.00	3500.00	3350.00
February, 10	750.00	12375.00	6900.00	1275.00	1587.50	6000.00	3490.00	3262.50
March, 10	750.00	12250.00	6850.00	1125.00	1112.50	6950.00	3187.50	3050.00
April, 10	750.00	12250.00	5900.00	1050.00	925.00	6000.00	2700.00	3087.50
May, 10	700.00	12375.00	5800.00	1087.50	925.00	6000.00	2600.00	3275.00
June, 10	700.00	12250.00	5450.00	1025.00	950.00	6100.00	2650.00	3300.00
July, 10	775.00	12250.00	5750.00	1062.50	990.00	6400.00	2650.00	3250.00
August, 10	800.00	12250.00	5750.00	1187.50	1162.50	6400.00	2475.00	3262.50
September, 10	825.00	11750.00	5750.00	1275.00	1750.00	6500.00	2575.00	3300.00
October, 10	850.00	12000.00	5850.00	1225.00	1900.00	6500.00	2600.00	3300.00
November, 10	875.00	12875.00	6000.00	1550.00	3250.00	6800.00	2725.00	3350.00
December, 10	900.00	13750.00	5700.00	1600.00	3800.00	6800.00	2850.00	3375.00

TABLE VII

Average Retail Prices of some essential commodities of Middle Class Consumption in Goa State

(In Rupees)

Year / Month	Rice Raw Medium husked Fair Price Kg	Rice, Boiled Medium Open Market Kg.	Rice, Raw, Mill husked, Open Market Kg.	Wheat, Brown Medium Quality, Fair Price Kg.	Wheat, Khandwa Brown Open Market Kg.	Turdal (Barsi) Superior Quality Kg.	Gram Watana Medium Quality Kg.	Moong Medium Quality Kg.	Coconut Oil Mill made Kg.
1	2	3	4	5	6	7	8	9	10
2005	8.71	13.32	12.06	6.60	12.91	32.63	17.76	29.88	100.39
2006	8.95	14.56	11.90	6.60	15.50	32.92	18.13	41.01	90.26
2007	8.95	15.97	12.19	6.60	16.41	39.75	21.70	39.40	88.50
2008	8.95	19.81	15.91	6.64	17.16	45.95	28.74	38.78	91.83
2009	8.95	24.88	18.20	6.60	18.61	70.07	25.26	53.13	94.69
2010	8.85	27.22	19.19	6.63	21.60	71.02	23.62	71.39	89.00
January, 10	8.95	26.98	18.20	6.63	21.70	87.32	23.85	77.45	100.79
February, 10	8.95	26.60	19.05	6.63	22.63	76.23	23.30	75.63	96.67
March, 10	8.95	27.11	20.24	6.63	22.38	71.65	22.63	74.04	95.17
April, 10	8.95	27.43	19.84	6.62	21.50	73.42	22.64	74.78	91.30
May, 10	8.95	27.22	19.42	6.63	21.46	73.42	22.29	78.55	88.26
June, 10	8.95	25.94	18.76	6.63	21.43	70.83	22.99	80.01	85.00
July, 10	8.95	25.98	19.42	6.63	21.41	72.14	23.35	81.20	87.00
August, 10	8.95	25.87	18.86	6.63	21.13	70.24	24.35	76.46	86.60
September, 10	8.95	25.27	18.54	6.64	21.55	67.05	24.20	66.30	81.82
October, 10	8.95	27.72	18.65	6.63	21.30	64.32	24.23	62.50	85.58
November, 10	8.95	29.33	19.20	6.63	21.34	65.15	24.44	58.71	84.40
December, 10	8.95	30.96	20.01	6.63	21.57	64.44	24.47	58.85	88.48

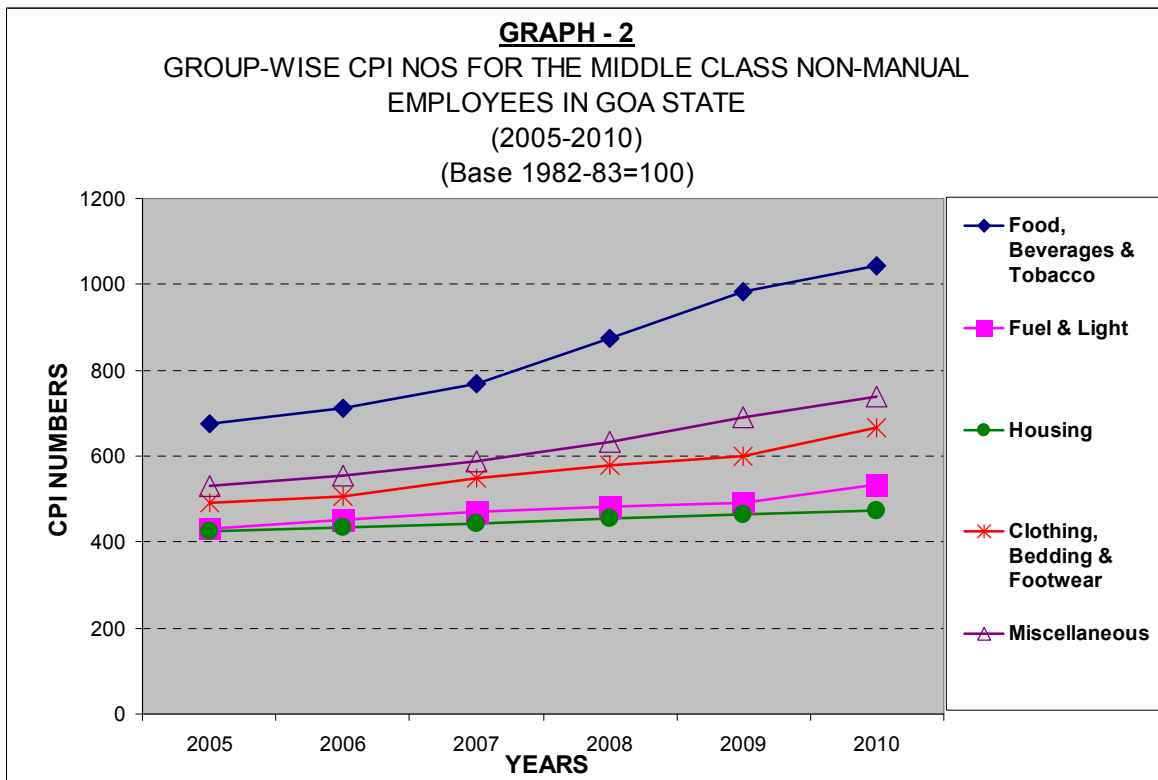
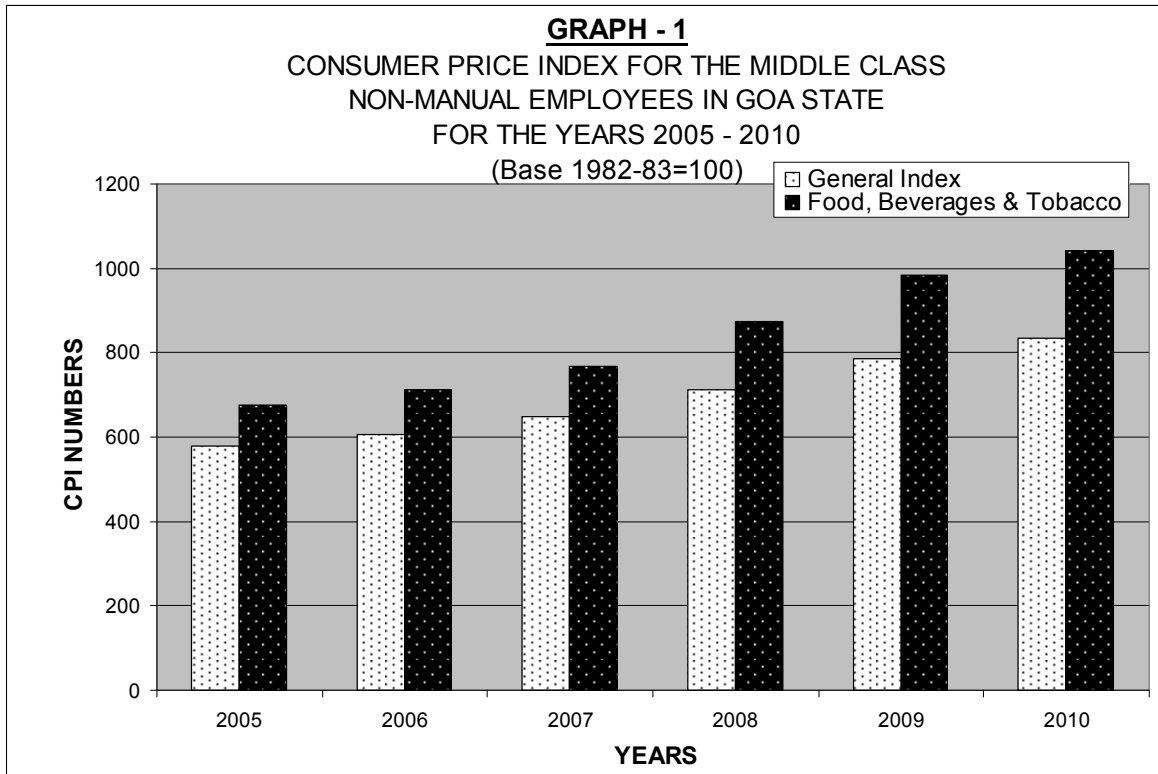
TABLE VII (Concluded)

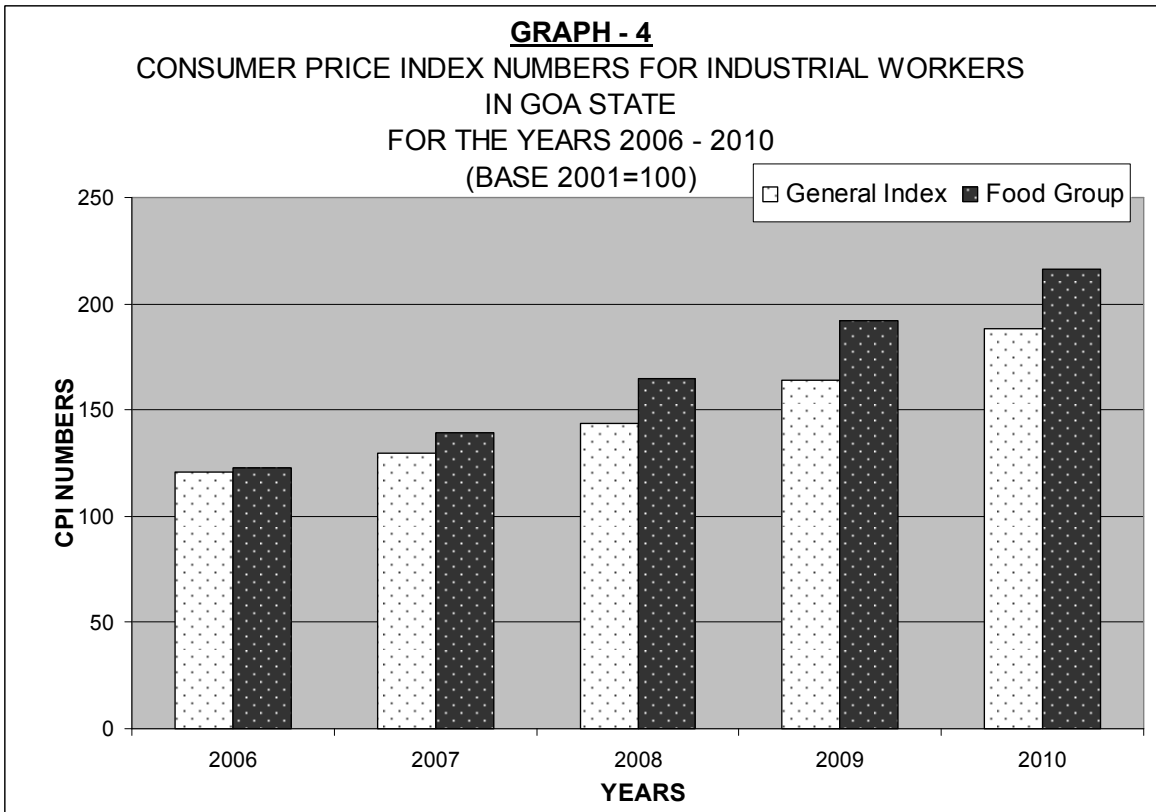
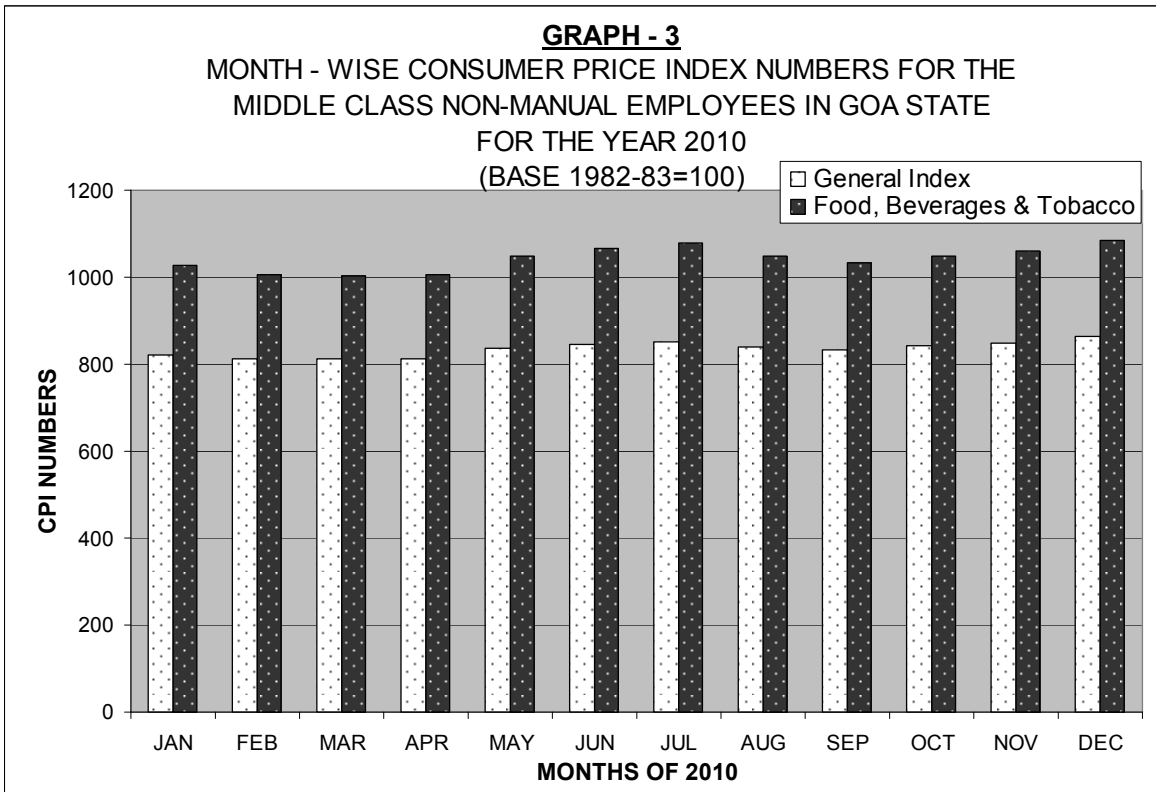
(In Rupees)

Year / Month	Groundnut Oil Pure, Mill made Kg.	Vanaspati Kg.	Chillies, Dry Byadgi (N.I.) Kg.	Potato (N.I.) Medium Quality Kg.	Onion (N.I.) Medium Quality Kg.	Coconut local Medium Size Kg.	Sugar		Gur Medium Quality Kg.	Arecanut Kg.
							Medium Quality Fair Price Kg.	Medium Quality Open market Kg.		
1	11	12	13	14	15	16	17	18	19	20
2005	73.51	56.13	65.63	11.35	11.29	9.60	15.21	19.04	23.37	97.26
2006	73.16	56.01	73.30	13.21	8.13	8.81	15.50	19.68	22.90	117.65
2007	85.96	62.81	76.96	14.07	14.91	8.61	15.50	15.22	19.25	120.41
2008	98.69	74.99	88.54	11.41	11.08	8.67	15.50	17.09	21.67	120.77
2009	97.01	63.60	120.28	16.61	16.62	8.79	N/A	26.40	34.01	122.80
2010	101.37	66.03	115.75	15.69	20.42	8.57	N/A	32.25	37.51	123.43
January, 10	94.77	63.59	117.14	20.06	24.00	8.84	N/A	41.02	41.06	124.61
February, 10	96.63	63.30	120.00	16.82	18.88	8.77	N/A	40.21	38.48	123.80
March, 10	96.83	63.72	112.67	14.27	14.38	8.50	N/A	35.76	37.42	125.00
April, 10	96.96	63.48	118.33	12.84	12.57	8.59	N/A	31.93	35.79	123.41
May, 10	97.08	62.64	118.82	13.16	12.26	8.05	N/A	30.30	35.83	123.29
June, 10	97.08	61.56	119.50	14.00	12.89	8.11	N/A	29.75	35.66	122.80
July, 10	97.05	64.79	113.81	13.86	13.61	8.47	N/A	29.14	37.39	119.80
August, 10	97.31	66.60	109.05	14.11	14.14	8.19	N/A	29.13	37.79	119.76
September, 10	96.86	67.23	116.25	14.96	19.18	8.30	N/A	28.02	37.51	120.50
October, 10	114.38	67.96	108.10	16.63	23.43	8.70	N/A	28.11	37.69	120.00
November, 10	120.60	70.40	112.14	16.97	29.74	8.79	N/A	29.51	37.85	124.29
December, 10	120.00	72.47	124.35	19.37	41.68	9.19	N/A	31.35	37.46	132.60

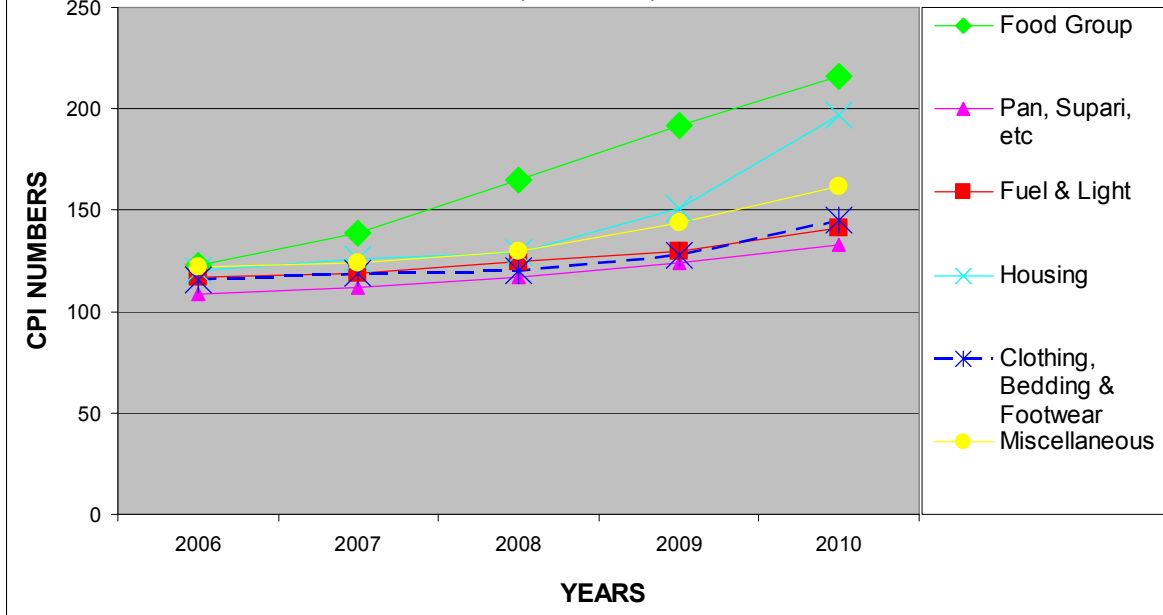
**CONSUMER PRICE INDEX
NUMBERS
IN GOA STATE**

**GRAPHICAL
ANALYSIS**

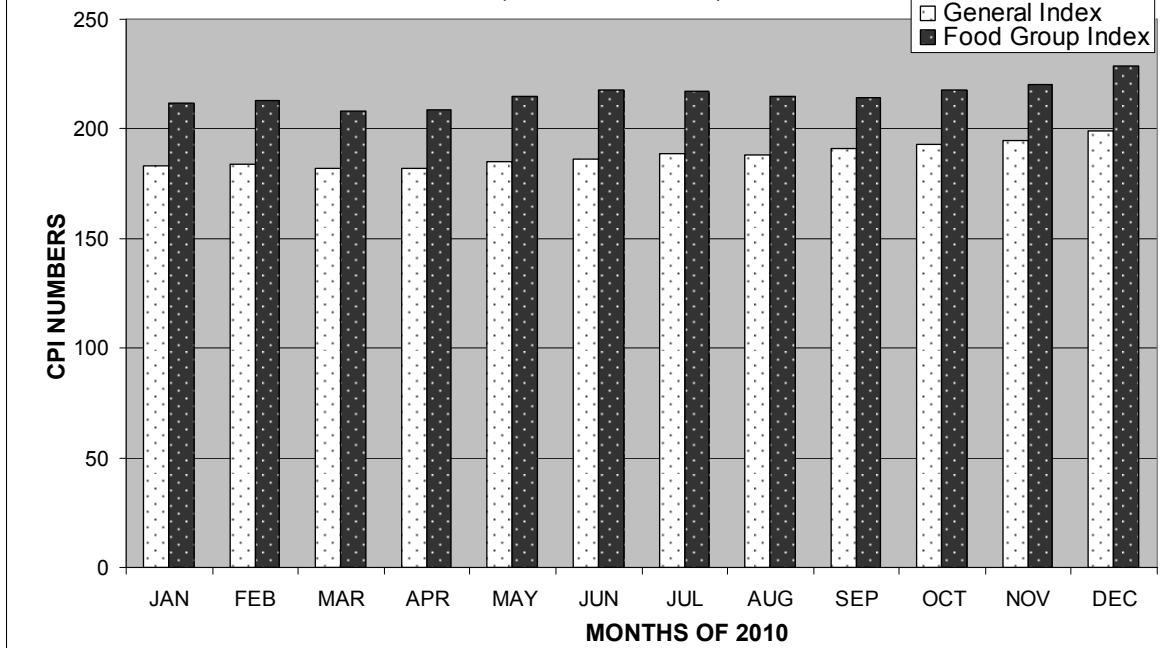




GRAPH - 5
GROUP-WISE CPI NUMBERS FOR INDUSTRIAL WORKERS IN GOA
STATE FOR THE YEARS 2006 - 2010
 (2001=100)

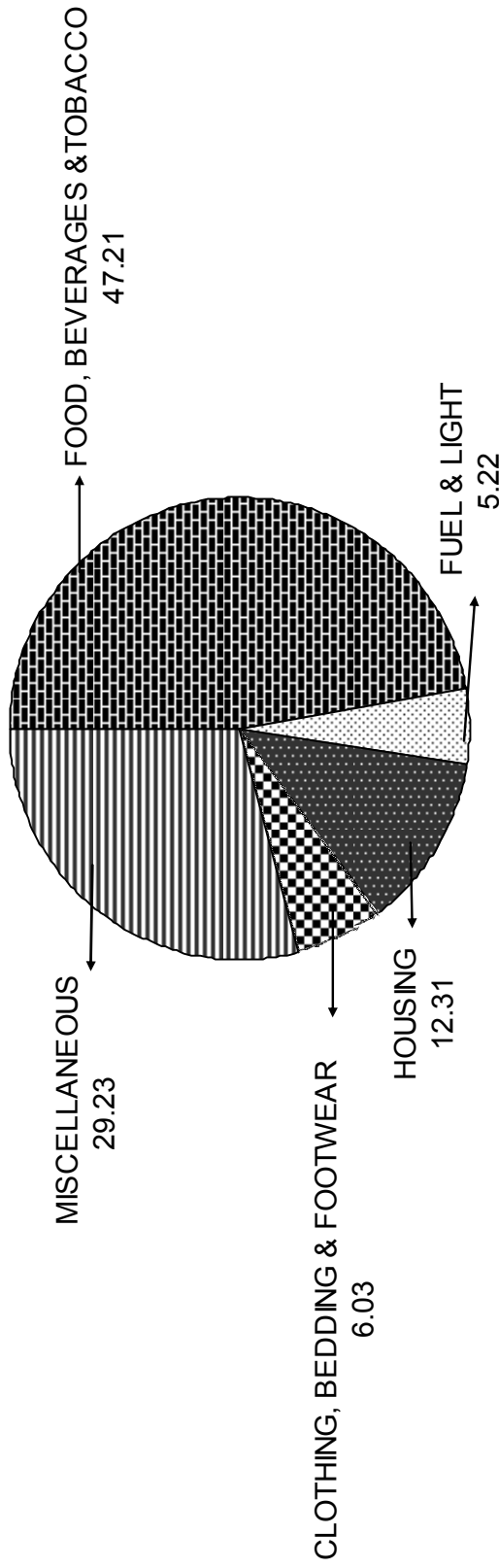


GRAPH - 6
MONTH-WISE CONSUMER PRICE INDEX NUMBERS FOR INDUSTRIAL
WORKERS IN GOA STATE FOR THE YEAR 2010
 (BASE 2001=100)

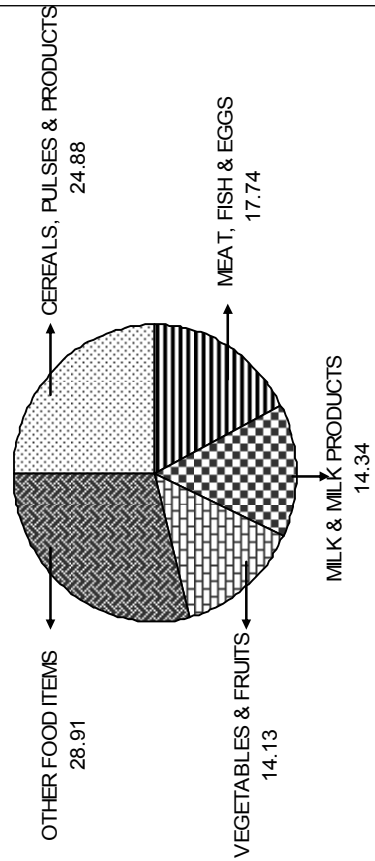


GRAPH - 7

GROUP-WISE WEIGHTS FOR CONSUMER PRICE INDEX NUMBERS FOR MIDDLE CLASS NON-MANUAL EMPLOYEES IN GOA STATE



SUB-GROUPWISE WEIGHTS OF FOOD ITEMS



SUB-GROUPWISE WEIGHT OF MISCELLANEOUS ITEMS

